

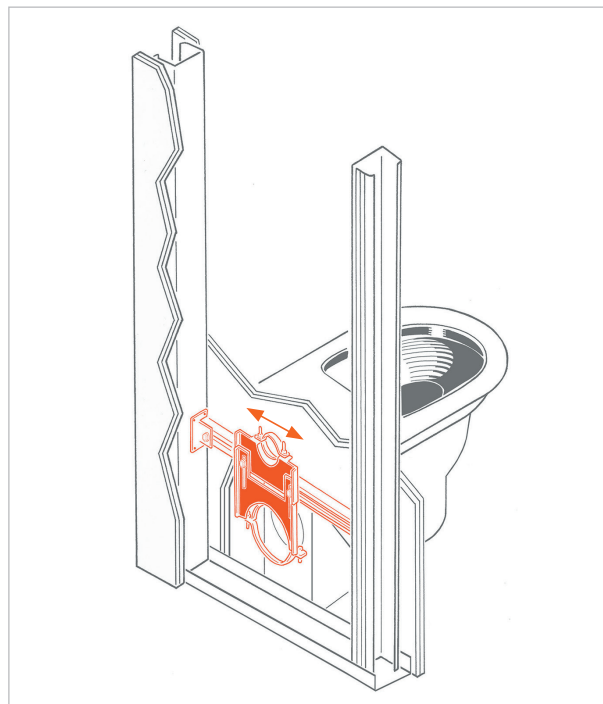
TDWP Floor wc bracket frame for plasterboard walls

APPLICATION

Used to faster floor wc on drywalls.

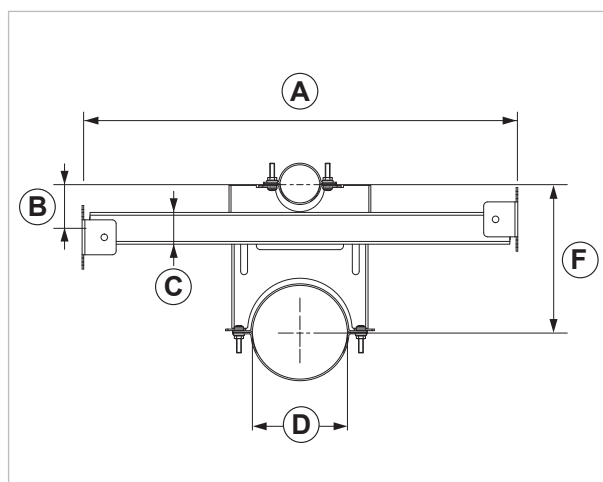
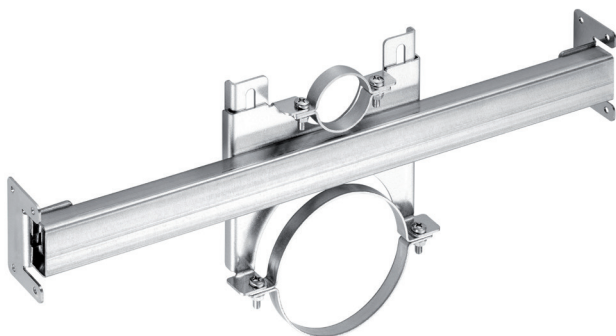
FEATURES AND BENEFITS

- > **Preassembled structure** - made of zinc plated steel, in compliance with EN10143 and EN10346 regulations - for a fast installation.
- > **Universals**, suitable for all kind of sanitary fixtures. It can be adjusted during installation, and it is designed to support the plumbing system for floor wc on plasterboard walls.
- > **Suitable** even for 100mm thick pillars.
- > By **simply sliding** the double plate, it is possible to set supply and drainage pipelines.
- > Suitable for **drainpipes of 90 or 110mm**. It is also provided with a pipe clamp of 50mm for supply pipeline connection.
- > It is recommended to use the specific "TDC" fixing kit (cod. 020730) together with universal crossbeam "TDU" (cod. 020731) to fasten flushing cisterns.



Kit composed of:

- 1 crossbeam with double preassembled plate for plumbing system fastening
- 1 pipe clamp for supply pipeline
- 1 pipe clamp for drainpipe
- 2 side flanges to fix the item to the pillars



COD	TYPE	A	B	C	D	F
020705	TDWP	530/550	55	40	90/110	140/190

SANITARY FIXINGS FOR PLASTERBOARD WALLS

SANITARY FIXINGS

MATERIALS TECHNICAL DATA

FRAME

Zinc plated steel DX51D+Z100 MAC - EN 10143, EN 10346

COMPONENTS

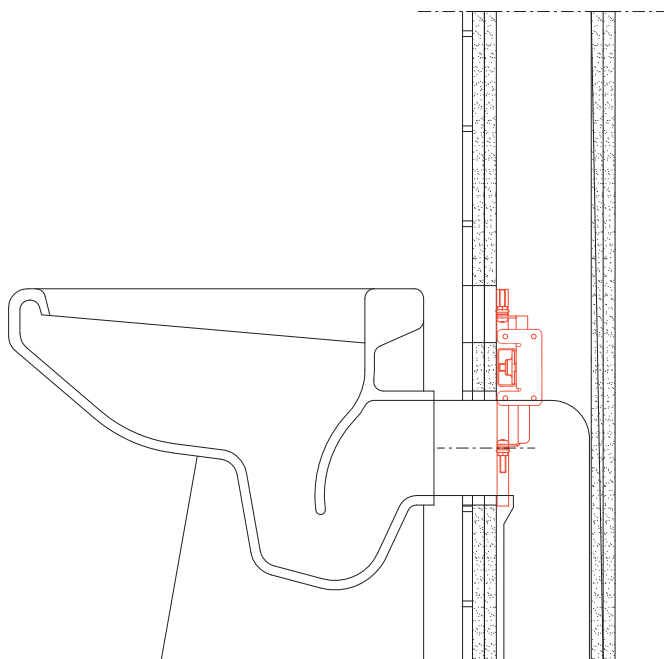
Steel 4.8 EN ISO 898.1 with electro zinc plating 7-8 µm

BASE MATERIAL

Plasterboard

INSTALLATION

In order to install the item properly, please follow the instructions included in the package.



PACKAGING

In cardboard box | 1 item

RELATED ITEMS

- > Plasterboard product range
- > SIP - PE foam protection strip for sanitary fixtures

DATA 07-2022 REV. 01

La presente scheda tecnica sostituisce ed annulla le precedenti. Le informazioni corrispondono alle nostre attuali conoscenze. Da esse non possono derivare nostre responsabilità e nessuna rivalsa.

Gia S.p.A. si riserva il diritto di modificare caratteristiche tecniche e modelli senza obbligo di preavviso.

Società soggetta a direzione e coordinamento di "Ethica Global Investments S.p.A."

Gia S.p.A. – Via Sac. A. Cremona, 12 – 28069 Trecate (NO) – www.gia.it