

TDW

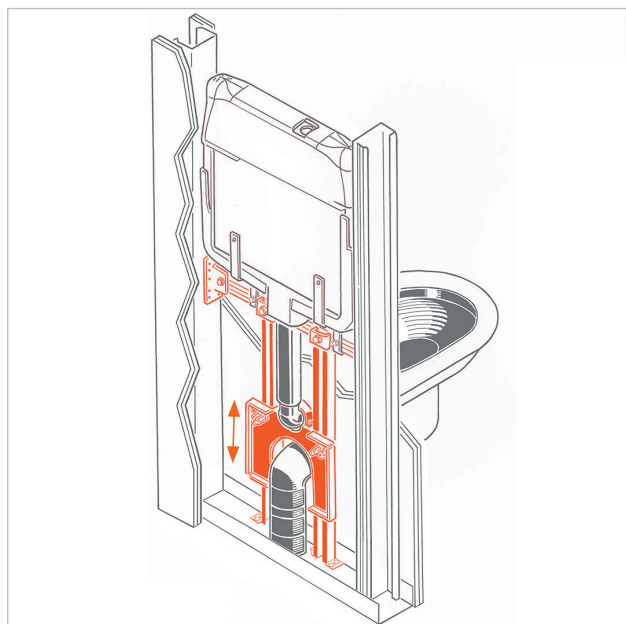
Wall hung wc bracket frame for plasterboard walls

APPLICATION

Used to fasten wall hung wc and the related pipes on plasterboard walls.

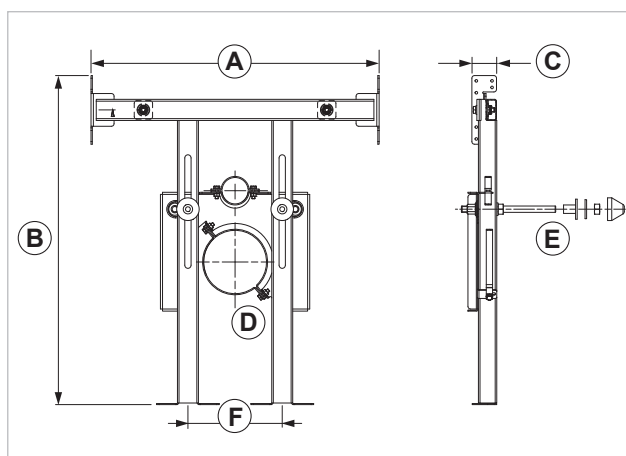
FEATURES AND BENEFITS

- > **Preassembled bracket frame** - made in zinc plated steel and compliant with EN10143 and EN10346 regulations - for a fast installation.
- > **Universal**, suitable for all kinds of sanitary fittings. It can be adjusted during installation, and it is designed to support ceramic wall hung wc - together with the related pipes - on plasterboard walls.
- > **Suitable** even for 100 mm struts.
- > By **simply sliding** its elements it easily fits **centre-to-centre distances of both 180 mm and 230 mm**.
- > Suitable to **drainpipes of either 90 or 110 mm**. It is provided with: two M12 threaded rods - that are adjustable to centre-to-centre distance of 180-230 mm; a pipe clamp of either 90 or 110mm for drainage pipes fixing; and a pipe clamp of 50mm for supplying pipe connection.



Kit composed of:

- 1 supporting bracket frame for wc fixing
- 1 connecting plate for pipes fixing
- 2 pipe clamps for drainpipes (1 of 90mm, preassembled + 1 of 110mm, included)
- 2 M12 threaded rods with related nuts
- 1 installation kit (including 2 washers, 2 caps, 2 nuts, 2 sockets)
- 1 data sheet with installation instructions



COD	TYPE	DESCRIPTION	A	B	C	D	E	F
020700	TDW		530/550	623	47	90/110	M12x180	180/230
020701	TDW 200	H +200	530/550	823	47	90/110	M12x180	180/230

SANITARY FIXINGS FOR PLASTERBOARD WALLS

SANITARY FIXINGS

MATERIALS TECHNICAL DATA

FRAME

Zinc plated steel DX51D+Z100 MAC - EN 10143, EN 10346

CAPS

PE Polyethylene

COMPONENTS

Steel 4.8 EN ISO 898.1 with electro zinc plating 7-8 µm

WASHERS

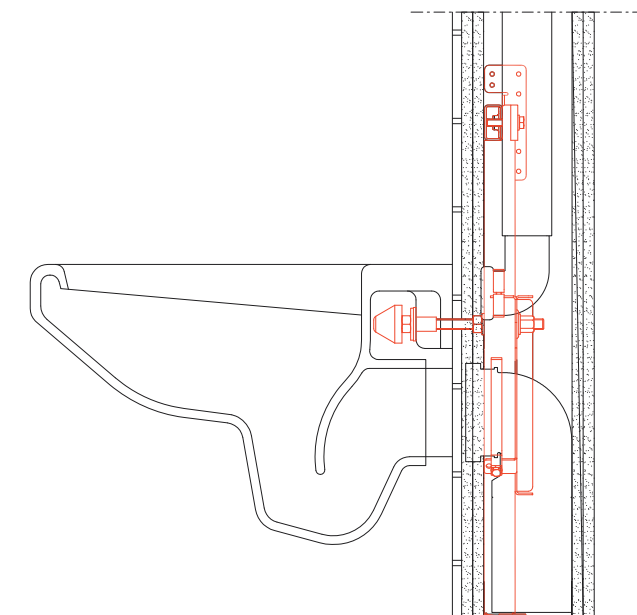
PA6 White Nylon

BASE MATERIAL

Plasterboard

INSTALLATION

In order to properly install the item, please follow installation instructions included in the package.



PACKAGING

In cardboard box

RELATED ITEMS

- > Plasterboard product range
- > SAP - PE foam protection template for wc and bidet fastening

DATA 07-2022 REV. 01

La presente scheda tecnica sostituisce ed annulla le precedenti. Le informazioni corrispondono alle nostre attuali conoscenze. Da esse non possono derivare nostre responsabilità e nessuna rivalsa.

Gia S.p.A. si riserva il diritto di modificare caratteristiche tecniche e modelli senza obbligo di preavviso.

Società soggetta a direzione e coordinamento di "Ethica Global Investments S.p.A."

Gia S.p.A. – Via Sac. A. Cremona, 12 – 28069 Trecate (NO) – www.gia.it