

WB 2 INOX

Side support for wc and bidet floor fastening

APPLICATION

Used to fasten sanitary fixtures on the floor.

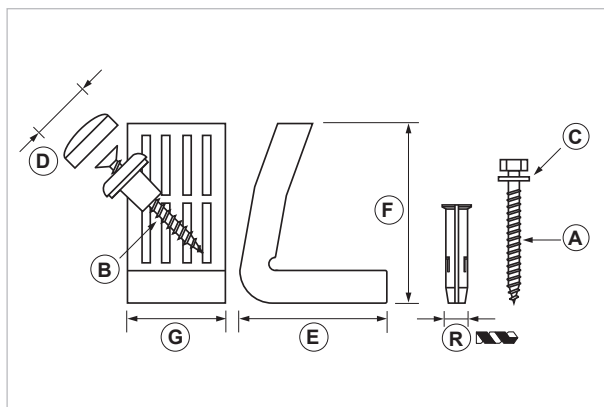
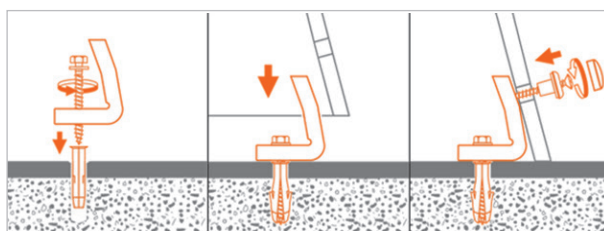
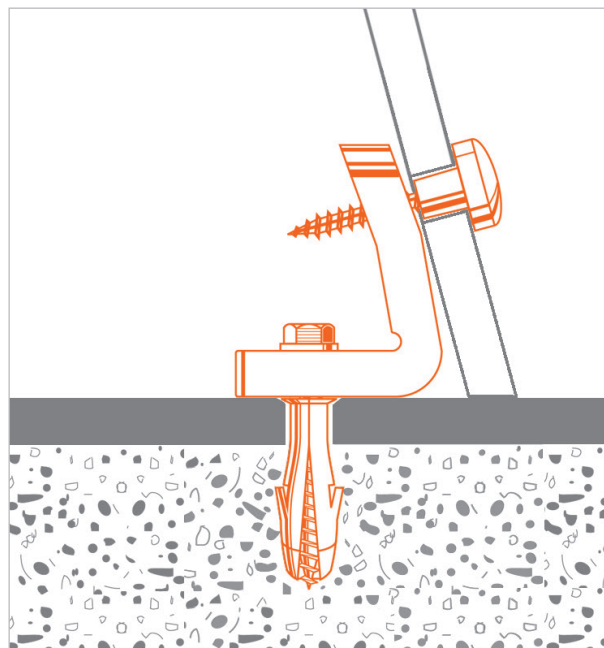
FEATURES AND BENEFITS

- > It ensures a **stable and reliable** sanitary floor fixing through side holes.
- > The exclusive **patented angle plate** support the screw in any position or slope.
- > **Longlasting high performance** is guaranteed by its solid and anticorrosive materials, and by **the stainless steel screws**.
- > Complete with chrome-plated plastic cap for a **good looking result**.
- > Easy to install thanks to the **long side holes** that make screw insertion easier.



Composed of:

- Stainless steel screws (TE 6x50 - TS 5x45)
- Washer 6,4x12x1,6
- Giolli plug 8x40
- Nylon angle plate
- Plastic cap



COD	TYPE	SCREWS	A	B	C	D	E	F	G	R
020201	WB 2 INOX	Stainless steel AISI 304	TE 6x50	TS 5x70	6,4x12x1,6	19,6	45	55	30	8

WC AND BIDET FLOOR FASTENING SANITARY FIXINGS

MATERIALS TECHNICAL DATA

PLUG

PP Polypropylene

SCREW

Stainless steel AISI 304 - EN 10088

ANGLE PLATE AND SOCKET

Nylon PA6

CAP

Chrome-plated plastic ABS

BASE MATERIAL

Cement

INSTALLATION

In order to properly install the plug, make a hole perpendicularly to the base support with the right drill bit. The hole must be cleaned up from drilling dust before applying the plug. Insert the plug and fix the angle plate.

Fasten the sanitary with the countersunk screw by screwing the angle plate.

INSTALLING TOOLS AND RECOMMENDATIONS

Drill, with drill bit Ø 8.

PACKAGING

In polyethylene bags | 2 items per bag

DATE 07-2022 REV. 01

The current technical data sheet substitutes and nullifies the previous ones. Information correspond with our current knowledge of the product. It cannot lead us to any sort of responsibility or compensation.

Gia S.p.A. reserves the right of changing technical features and molds without previous notice.

Company under the management of "Ethica Global Investments S.p.A."

Gia S.p.A. – Via Sac. A. Cremona, 12 – 28069 Trecate (NO) – www.gia.it