

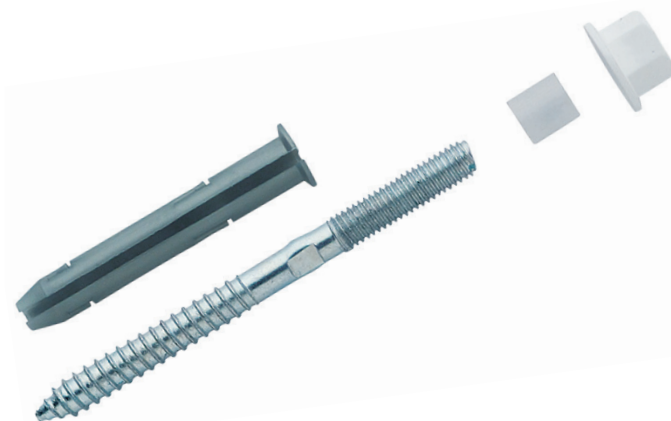
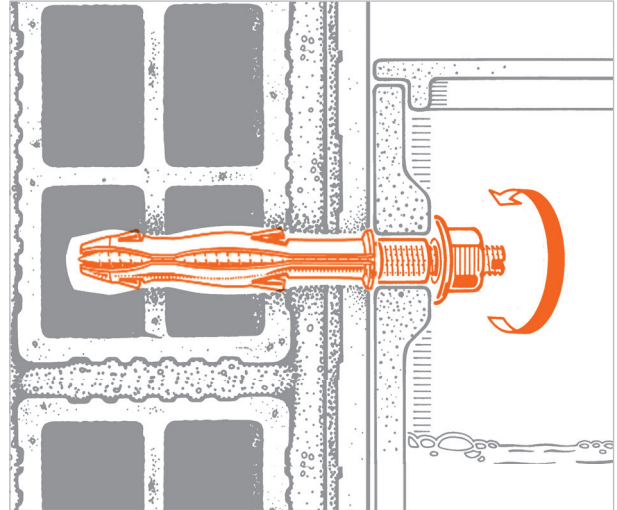
CP Wall fixing for flushing cisterns

APPLICATION

Used to fasten **flushing cisterns** to the wall.

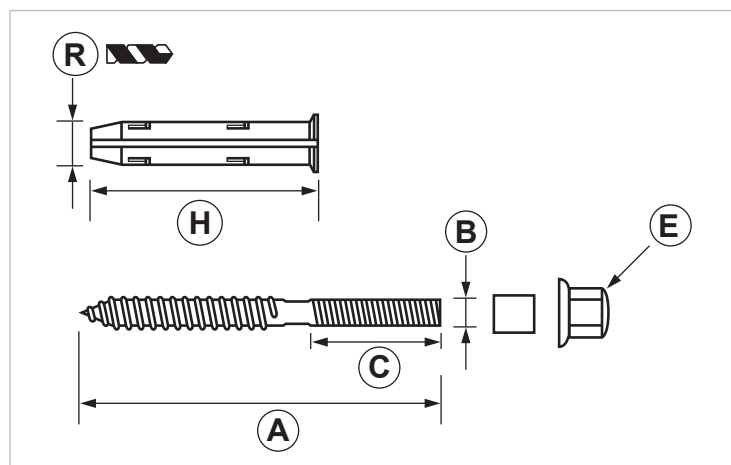
FEATURES AND BENEFITS

- > Both nylon socket and nut guarantee maximum **protection to the ceramics** during fixing.
Longlasting vertical fastening.



Composed of:

- double threaded screw
- Giolli plug
- socket
- nut



COD	TYPE	A	B	C	E	H	R
031900	CP	100	M8	30	M8	70	10

WC AND BIDET FLOOR FASTENING

SANITARY FIXINGS

MATERIALS TECHNICAL DATA

PLUG

PP Polypropylene

SCREW

Steel 4.8 EN ISO 898.1 with electro zinc-plating 7-8 µm

SOCKET AND NUT

Nylon PA6

BASE MATERIAL

Cement - Masonry - Plastered hollow brick - Prestressed support

INSTALLATION

In order to properly install the plug, make a hole perpendicularly to the base support with the right drill bit. The hole must be cleaned up from drilling dust before applying the plug. Do not use impact drill on an hollow brick wall in order to prevent internal bulkheads breakage.

Eventually, insert the plug and complete the installation by completely fixing the item.

INSTALLING TOOLS AND RECOMMENDATIONS

Drill, with drill bit Ø 10.

PACKAGING

In polyethylene bags | 2 items per bag

DATE 07-2022 REV. 01

The current technical data sheet substitutes and nullifies the previous ones. Information correspond with our current knowledge of the product. It cannot lead us to any sort of responsibility or compensation.

Gia S.p.A. reserves the right of changing technical features and molds without previous notice.

Company under the management of "Ethica Global Investments S.p.A."

Gia S.p.A. – Via Sac. A. Cremona, 12 – 28069 Trecate (NO) – www.gia.it