

## RIN STO 1

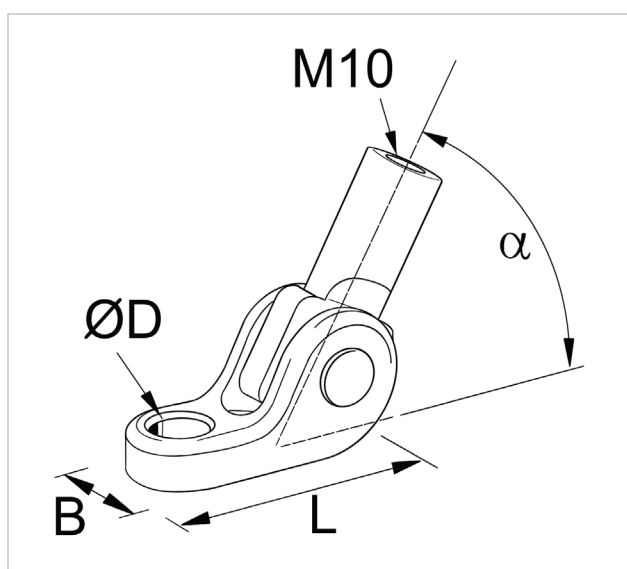
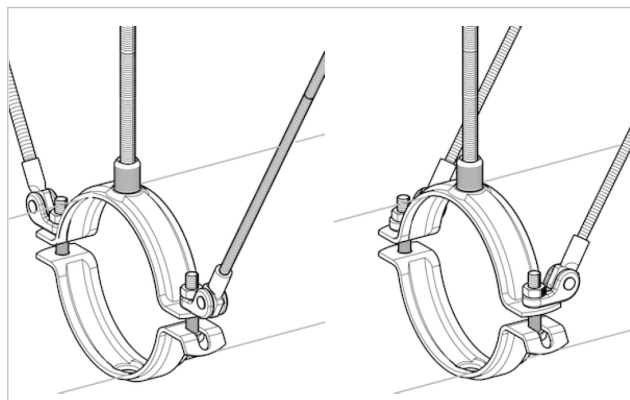
### Earthquake-resistant junction for pipe clamps

#### APPLICATION

It is used to set up lateral and longitudinal supports.

#### FEATURES AND BENEFITS

- > It is suitable to set up **earthquake-resistant supports** - **either lateral or longitudinal** - when combined with one of the pipe clamps of the STO1 or STO1G range.
- > It can be **set either in the middle or at the side of the pipe clamp**.



| COD    | TYPE      | Description | $\alpha$ | B  | L  | $\varnothing D$ |
|--------|-----------|-------------|----------|----|----|-----------------|
| 161757 | RIN STO 1 | For BF 10   | 0 - 45°  | 20 | 52 | 11              |

# SEISMIC-STRUT

## INDUSTRIAL FIXING SYSTEM

### MATERIALS TECHNICAL DATA

#### JUNCTION

Steel DX51D EN 10142 with electro zinc-plating

#### BASE MATERIAL

Concrete

#### RECOMMENDED LOADS

| COD.   | Load capacity in all directions |
|--------|---------------------------------|
| 161757 | 500 daN                         |

### PACKAGING

In cardboard box

### RELATED ITEMS

> G-STRUT heavy duty industrial fixing system

#### DATE 07-2023 REV. 00

The current technical data sheet substitutes and cancels the previous ones. The details provided fit our current knowledge of the product. It cannot lead us to any sort of responsibility or compensation.

Gia S.p.A. reserves the right of changing technical features and molds without notice.

This company is subject to "Ethica Global Investments S.p.A." management.

Gia S.p.A. – Via Sac. A. Cremona, 12 – 28069 Trecate (NO) – [www.gia.it](http://www.gia.it)

