

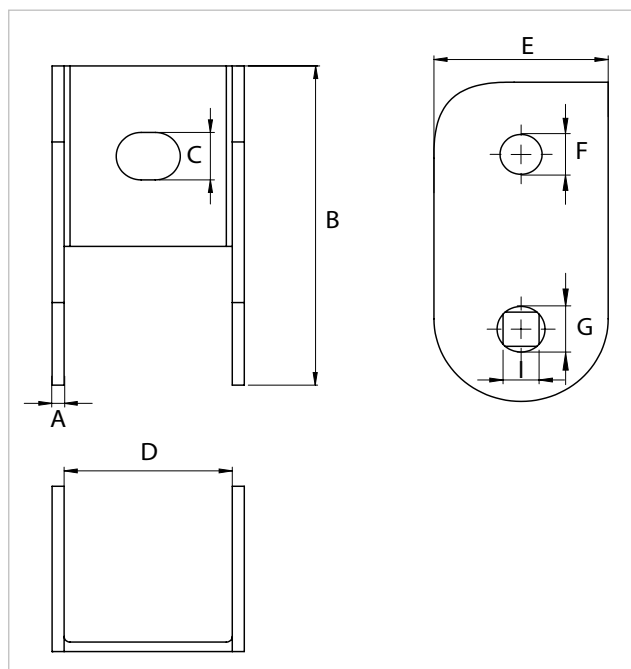
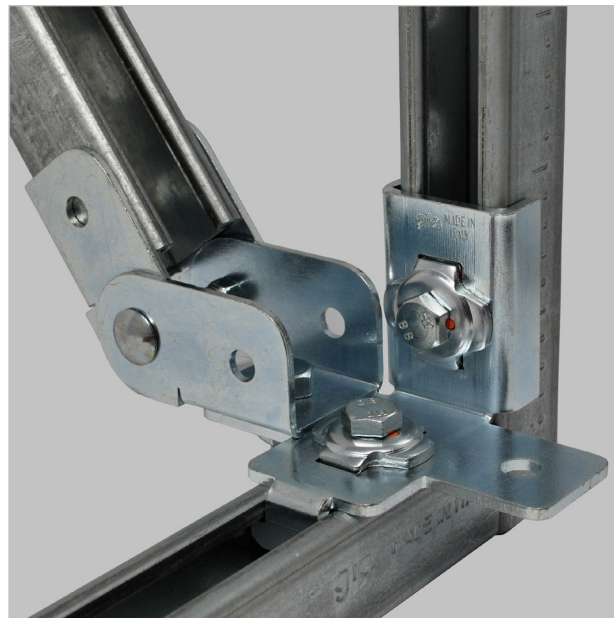
CER SM G-Strut earthquake-resistant hinge connection

APPLICATION

It is used to set up lateral and longitudinal supports.

FEATURES AND BENEFITS

- > It can be directly fastened on concrete, and it is suitable for connecting **41x41 mm PF3 or PF3L strut channels** to supporting structures in order to set up lateral and longitudinal supports.
- > It makes earthquake-resistant supports **installation faster**.
- > Thanks to the swiveling middle junction, it is possible to **adjust the slope before tightening the bolts**.



COD	TYPE	Description	A	B	C	D	E	F	G	I
161754	CER SM	For channels 41x41mm	3 mm	84 mm	12,5 mm	42 mm	43,5 mm	Ø 10,50	Ø 12	9

SEISMIC-STRUT

INDUSTRIAL FIXING SYSTEM

MATERIALS TECHNICAL DATA

MATERIAL

Steel DX51D EN 10142 with sendzimir zinc-plating

BASE MATERIAL

Concrete

RECOMMENDED LOADS

Installation slope	Load capacity according to installation slope
30° - 44°	250 daN
45° - 59°	300 daN
60° - 74°	350 daN
75° - 90°	400 daN

PACKAGING

In cardboard box

RELATED ITEMS

> G-STRUT heavy duty industrial fixing system

DATE 07-2023 REV. 00

The current technical data sheet substitutes and cancels the previous ones. The details provided fit our current knowledge of the product. It cannot lead us to any sort of responsibility or compensation.

Gia S.p.A. reserves the right of changing technical features and molds without notice.

This company is subject to "Ethica Global Investments S.p.A." management.

Gia S.p.A. – Via Sac. A. Cremona, 12 – 28069 Trecate (NO) – www.gia.it

