

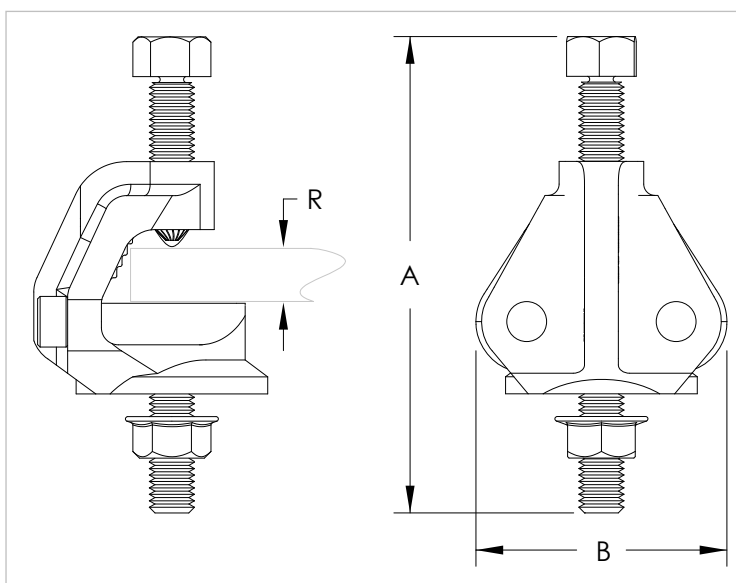
AST Earthquake-resistant beam clamp for iron girders

APPLICATION

It is used to set up lateral and longitudinal supports.

FEATURES AND BENEFITS

- > It is suitable to set up **earthquake-resistant supports** - **either lateral or longitudinal** - when combined with "AGG SM" universal joint.
- > Thanks to the **locking bolt** - **which head's breakage is calibrated** - supports installation is quick and handy.
- > At the building site **no torque wrench is needed** to tighten the beam clamp.
- > It is **FM approved**.
- > It is **compliant with NFPA®-13 regulations** for American earthquake-resistant supports.



COD	TYPE	A	B	R
161752	AST	63,5 mm	70 mm	6,4 - 19,1 mm

SEISMIC-STRUT

INDUSTRIAL FIXING SYSTEM

MATERIALS TECHNICAL DATA

BEAM CLAMP

Steel DX51D EN 10142 with electro zinc-plating

BASE MATERIAL

Concrete

RECOMMENDED LOADS

Installation slope	Load capacity according to installation slope
30° - 44°	5.290 N
45° - 59°	7.470 N
60° - 74°	5.160 N
75° - 90°	5.690 N

Support direction: **PARALLEL**

Installation slope	Load capacity according to installation slope
30° - 44°	7.210 N
45° - 59°	7.610 N
60° - 74°	4.490 N
75° - 90°	4.940 N

Support direction: **PERPENDICULAR**

PACKAGING

In cardboard box

RELATED ITEMS

> G-STRUT heavy duty industrial fixing system

DATE 07-2023 REV. 00

The current technical data sheet substitutes and cancels the previous ones. The details provided fit our current knowledge of the product. It cannot lead us to any sort of responsibility or compensation.

Gia S.p.A. reserves the right of changing technical features and molds without notice.

This company is subject to "Ethica Global Investments S.p.A." management.

Gia S.p.A. – Via Sac. A. Cremona, 12 – 28069 Trecate (NO) – www.gia.it

