

### ANG SM 90°

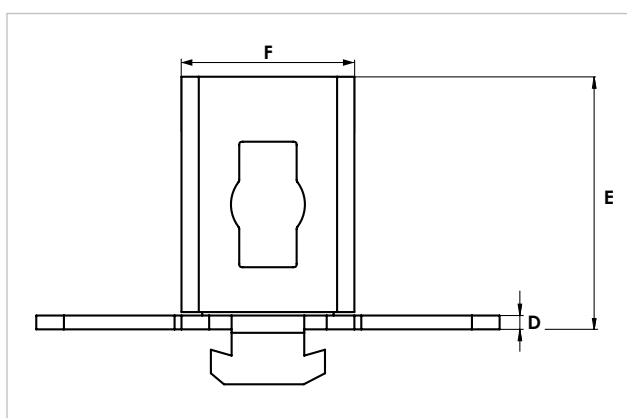
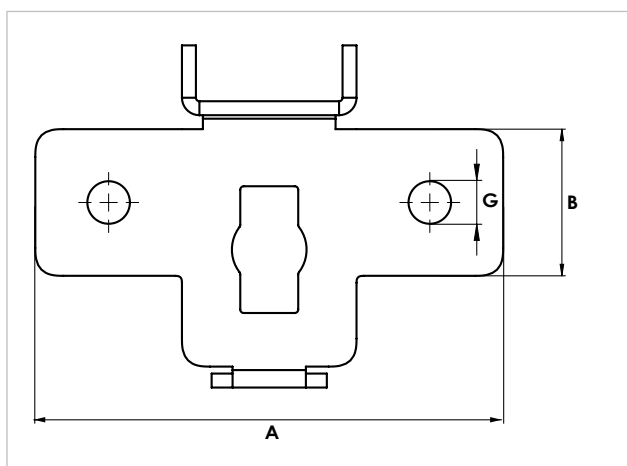
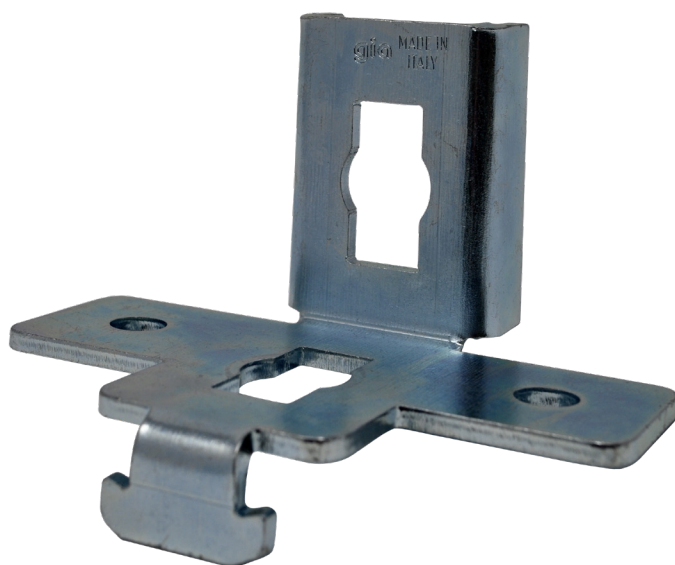
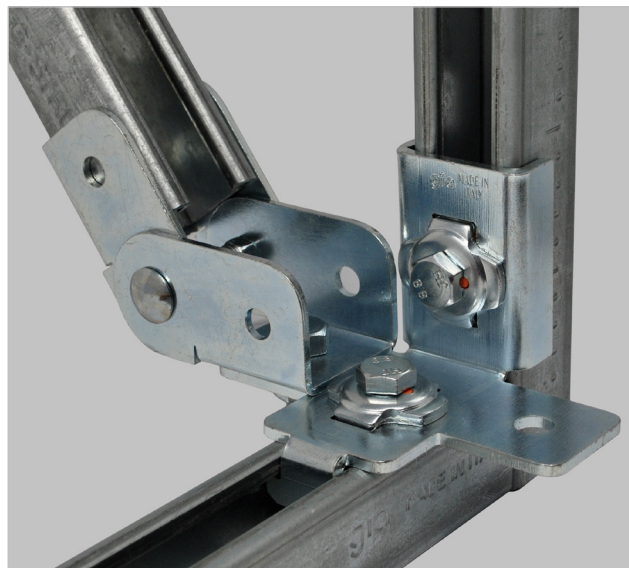
#### 90° earthquake-resistant G-Strut angle bracket

#### APPLICATION

It is used to set up lateral and longitudinal supports.

#### FEATURES AND BENEFITS

- > It is suitable for **PF3, PF3L and PF4 strut channels**, and - together with other earthquake-resistant items - it is used to set up strengthening structures, using either threaded rods or strut channels.
- > Thanks the **JBR10 quick connection bolt**, its installation is very quick itself.



COD	TYPE	Description	A	B	C	D	E	F	G
161755	ANG SM 90°	For G-Strut channel 41x41 mm	134	42	26	4	72	50	12,20

# SEISMIC-STRUT

## INDUSTRIAL FIXING SYSTEM

### MATERIALS TECHNICAL DATA

#### MATERIAL

Steel DX51D EN 10142 with sendzimir zinc-plating

#### BASE MATERIAL

Concrete

### RECOMMENDED LOADS

COD.	Load capacity in all directions
161755	300 daN

### PACKAGING

In cardboard box

### RELATED ITEMS

> G-STRUT heavy duty industrial fixing system

### DATE 07-2023 REV. 00

The current technical data sheet substitutes and cancels the previous ones. The details provided fit our current knowledge of the product. It cannot lead us to any sort of responsibility or compensation.

Gia S.p.A. reserves the right of changing technical features and molds without notice.

This company is subject to "Ethica Global Investments S.p.A." management.

Gia S.p.A. – Via Sac. A. Cremona, 12 – 28069 Trecate (NO) – [www.gia.it](http://www.gia.it)

