

JDMP

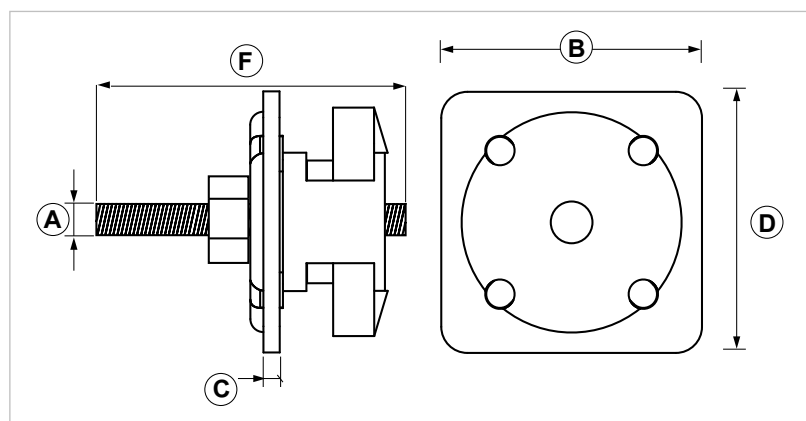
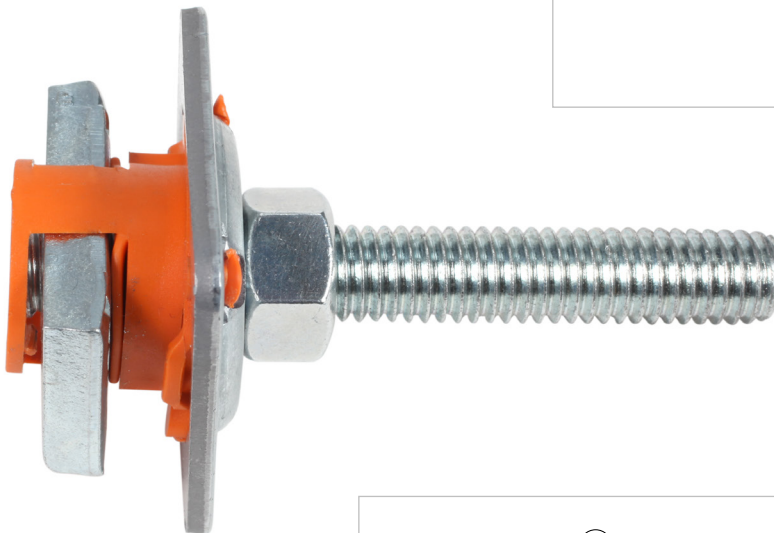
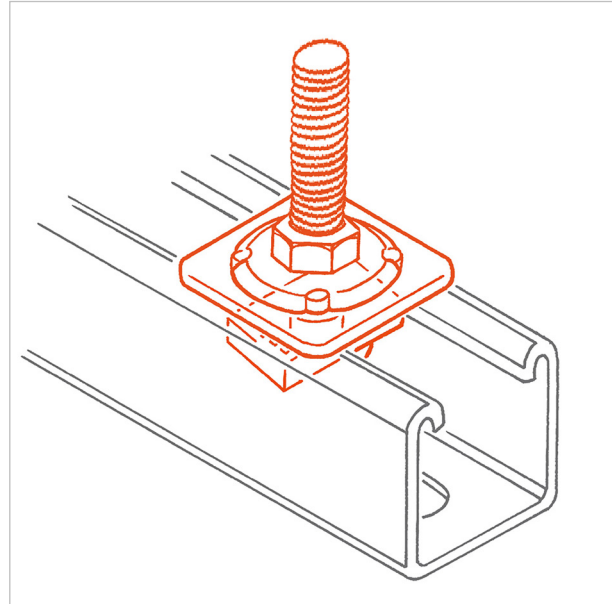
Fast coupling pipe clamps fixing

APPLICATION

Used to connect pipe clamps on PF3 and PF4 strut channels.

FEATURES AND BENEFITS

- > It is provided already assembled in order to guarantee a very quick installation: it takes only few seconds to fix it.
- > It can be inserted anywhere on the strut channel with a simple 90° rotation.
- > Thanks to its exclusive **clockwork system**, it is possible to adjust the elements at the desired position before fasten them down.



COD	TYPE	A	B	C	D	F
161980	JDMP 8x70	M8	40	2,5	40	70
161985	JDMP 10x70	M10	40	2,5	40	70

INDUSTRIAL FIXING SYSTEMS

CONNECTION PARTS

MATERIALS TECHNICAL DATA

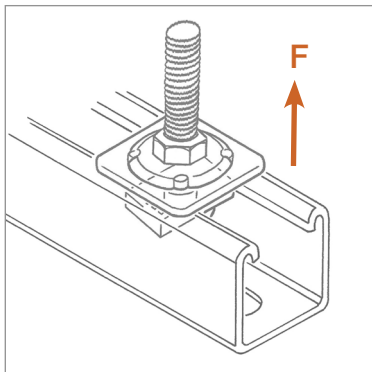
WASHER

Steel 4.8 EN ISO 898.1 with electro zinc plating 7-8 μm

INSERT

PP Polypropylene

RECOMMENDED LOADS



TYPE	F
JDMP 8x70	500
JDMP 10x70	500

Recommended load is the average resistance load with a safety coefficient.

Data are expressed in daN.
1 daN=1 kg

PACKAGING

In cardboard box

RELATED ITEMS

- > PF3 and PF4 strut channels
- > Threaded rods
- > Pipe clamps

DATE 06-2023 REV. 01

The current technical data sheet substitutes and cancels the previous ones. The details provided fit our current knowledge of the product. It cannot lead us to any sort of responsibility or compensation.

Gia S.p.A. reserves the right of changing technical features and molds without notice.

This company is subject to "Ethica Global Investments S.p.A." management.

Gia S.p.A. – Via Sac. A. Cremona, 12 – 28069 Trecate (NO) – www.gia.it