



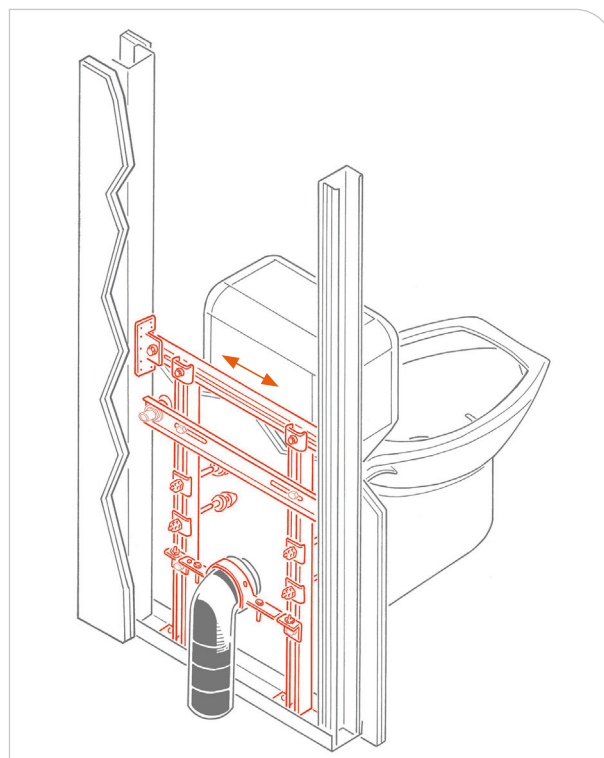
## Wall hung accessible wc bracket frame for plasterboard walls

### APPLICATION

Wall hung accessible wc fastening on drywalls.

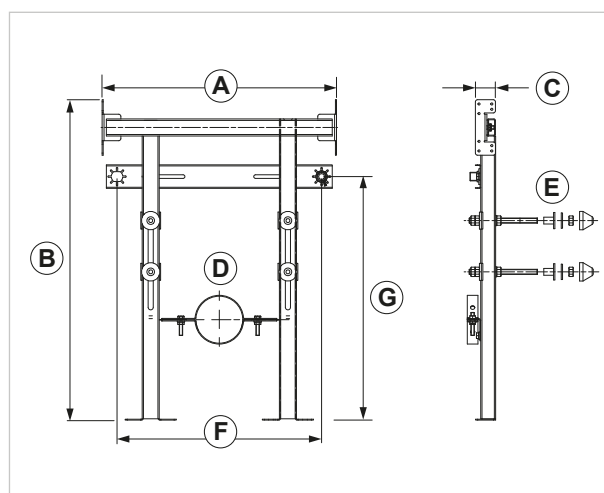
### FEATURES AND BENEFITS

- > **Preassembled supporting frame** - made of zinc-plated steel, and compliant with EN10143 and EN10346 regulations - for **sanitary fixtures with 4 fixing points**.
- > **Fast and easy** installation: it can be adjusted during installation by sliding the fitting for 90/110mm drainpipes, with 180-322 mm centre-to-centre distance.
- > Provided with **a crossbeam** with 1/2" M/F antirotation brass joint used to fasten drainage and adduction pipes for **wc flushing cistern**.



Kit composed of:

- 1 supporting frame
- 1 pipe clamp for drainpipe
- 4 threaded rods M12 for wc support
- 1 crossbeam for water adduction
- 2 fixing kits (including 2 washers, 2 caps, 2 nuts, 2 sockets)
- 1 data sheet with installation instructions



COD	TYPE	A	B	C	D	E	F	G
020708	TDWH	530/550	750	47	90/110	M12x180	480	570

**MATERIALS TECHNICAL DATA****FRAME**

Zinc plated steel DX51D+Z100 MAC - EN 10143, EN 10346

**CAPS**

PE Polyethylene

**COMPONENTS (M12 THREADED RODS - NUTS)**

Steel 4.8 EN ISO 898.1 with electro zinc plating 7-8 µm

**WASHERS**

White Nylon PA6

**SOCKETS**

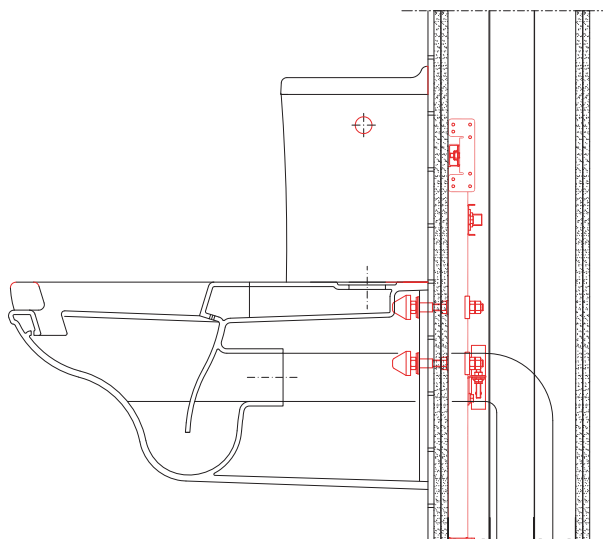
Brass CW 614N EN 12164

**BSE MATERIAL**

Plasterboard

**INSTALLATION**

In order to install the item properly, please follow the instructions included in the package.

**PACKAGING**

In cardboard box

**RELATED ITEMS**

> Plasterboard product range

**DATE 04-2020 REV. 00**

The current technical data sheet substitutes and cancels the previous ones. Information correspond with our current knowledge of the product. It cannot lead us to any sort of responsibility or compensation.

Gia S.p.A. reserves the right of changing technical features and molds without notice.

Gia S.p.A. – Via Sac. A. Cremona, 12 – 28069 Trecate (NO) – [www.gia.it](http://www.gia.it)

T 02.11.35 REV 0

