



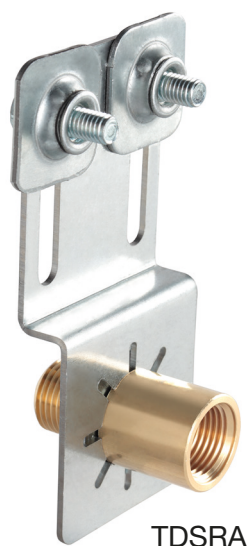
## Z-shaped brackets for plasterboard walls

### APPLICATION

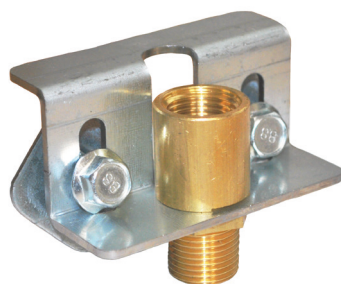
Additional pipelines fastening.

### FEATURES AND BENEFITS

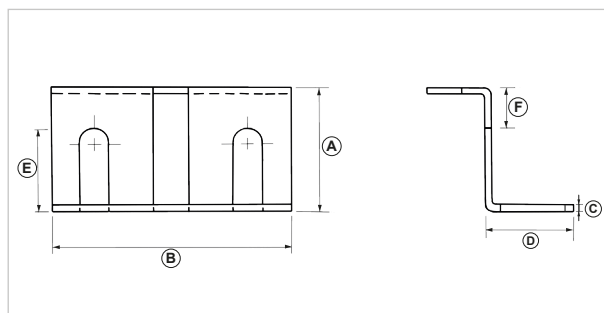
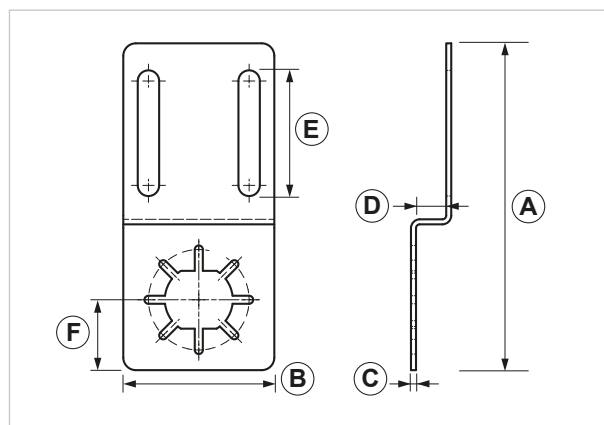
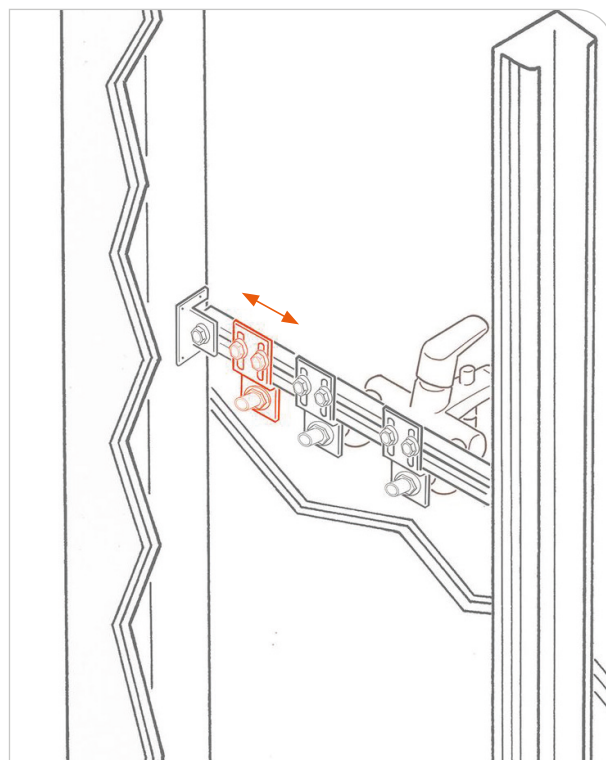
- > **Preamsembled item** that can be installed on a pre-existing frame.
- > Particularly useful to fasten additional accessories in sanitary fixtures.
- “TDIRA” version only for internal application.
- > Complete with antirotation brass socket G1/2” M/F.



TDSRA



TDIRA



COD	TYPE	A	B	C	D	E	F
020739	TDSRA	130	60	2	12	50	28
020732	TDIRA	40	85	2	30	25	12

**MATERIALS TECHNICAL DATA****PLATE**

Zinc plated steel EN 10143, EN 10346

**SOCKET**

Brass CW 614N EN 12164

**COMPONENTS**

Steel 4.8 EN ISO 898.1 with electro zinc plating 7-8 µm

**BASE MATERIAL**

Plasterboard

**PACKAGING**

In cardboard box

**RELATED ITEMS**

- > TDM1 - Internal mixer bracket frame for plasterboard walls
- > TDM2 - External mixer bracket frame for plasterboard walls
- > TDLA - Dishwasher / washing machine bracket frame for plasterboard walls
- > TDT - Universal crossbeam for plasterboard walls

**DATE 04-2020 REV. 00**

The current technical data sheet substitutes and cancels the previous ones. Information correspond with our current knowledge of the product. It cannot lead us to any sort of responsibility or compensation.

Gia S.p.A. reserves the right of changing technical features and molds without notice.

**Gia S.p.A. – Via Sac. A. Cremona, 12 – 28069 Trecate (NO) – [www.gia.it](http://www.gia.it)**

T 02.11.48 A REV 0

