



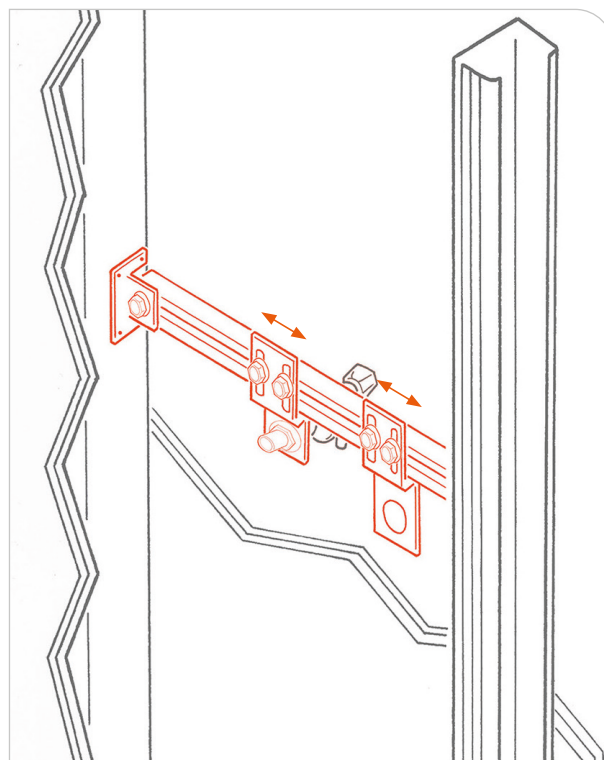
Dishwasher / washing machine bracket frame for plasterboard walls

APPLICATION

Used to fasten plumbing joints for dishwashers and washing machines on plasterboard walls.

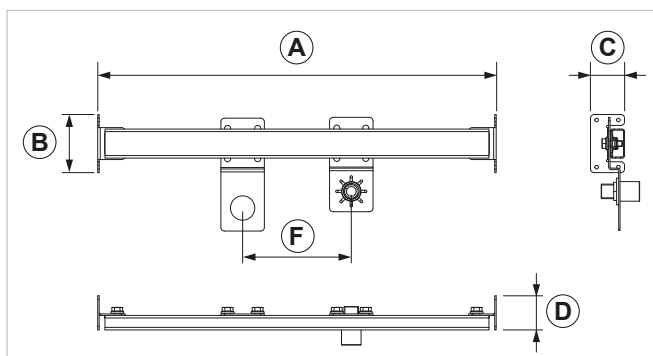
FEATURES AND BENEFITS

- > **Preassembled supporting frame** - made of zinc plated steel, compliant with EN10143 and EN10346 regulations - for a fast installation. It can be adjusted during installation.
- > The bracket frame is provided with **2 Z-shaped brackets**: one of them is provided with a straight brass joint M/F of 1/2" - compliant with EN12164 regulation - which is used to fasten pipelines; while the other is provided with a hole of Ø 33,5 mm for drainpipe fixing.
- > The two brackets **are able to slide along the frame** so that the pipeline for water adduction and the drainpipe can be set at the right position.



Composed of:

- 1 crossbeam for pipelines fixing
- 2 side flanges to fix the item to the pillars
- 1 Z-shaped bracket with M-F 1/2" joint for adduction pipeline
- 1 Z-shaped bracket for drainpipe fixing



COD	TYPE	A	B	C	D	F
020737	TDLA	530/550	80	47	47	75/380

**MATERIALS TECHNICAL DATA****FRAME**

Zinc plated steel DX51D+Z100 MAC - EN 10143, EN 10346

JOINTS

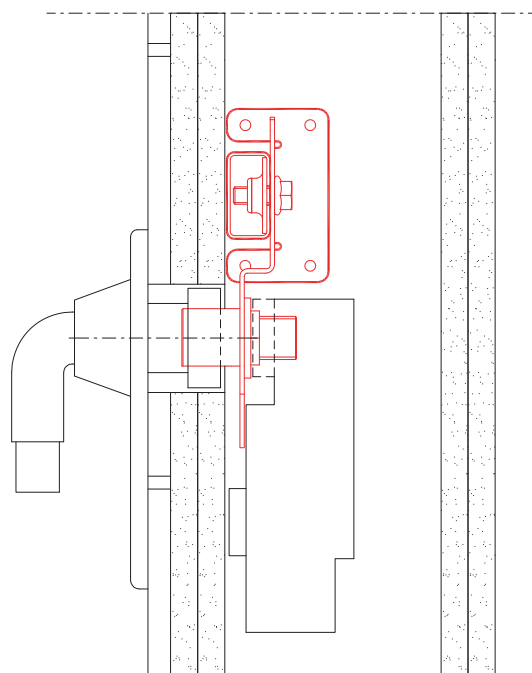
Brass CW 614N EN 12164

COMPONENTS

Steel 4.8 EN ISO 898.1 with electro zinc plating 7-8 µm

BASE MATERIAL

Plasterboard

INSTALLATION**PACKAGING**

In cardboard box

RELATED ITEMS

> Plasterboard product range

DATE 04-2020 REV. 00

The current technical data sheet substitutes and cancels the previous ones. Information correspond with our current knowledge of the product. It cannot lead us to any sort of responsibility or compensation.

Gia S.p.A. reserves the right of changing technical features and molds without notice.

Gia S.p.A. – Via Sac. A. Cremona, 12 – 28069 Trecate (NO) – www.gia.it

T 02.11.47 REV 01