

SUV 3/4" - SUV 1"

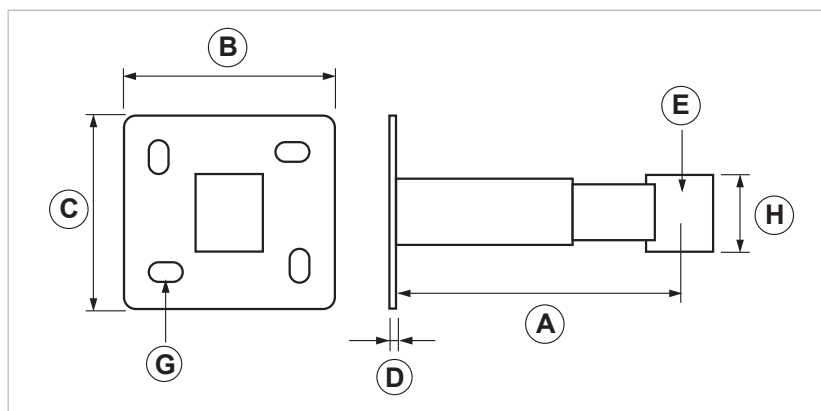
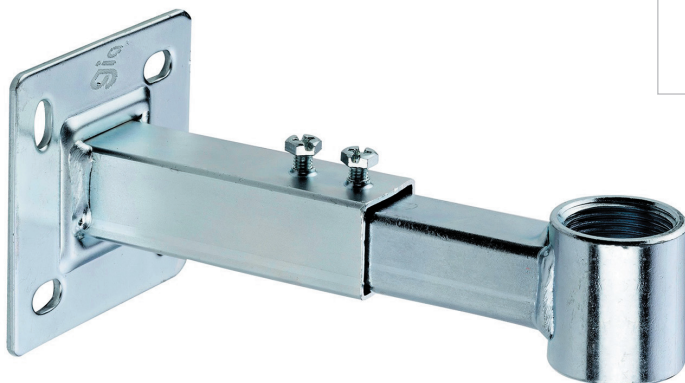
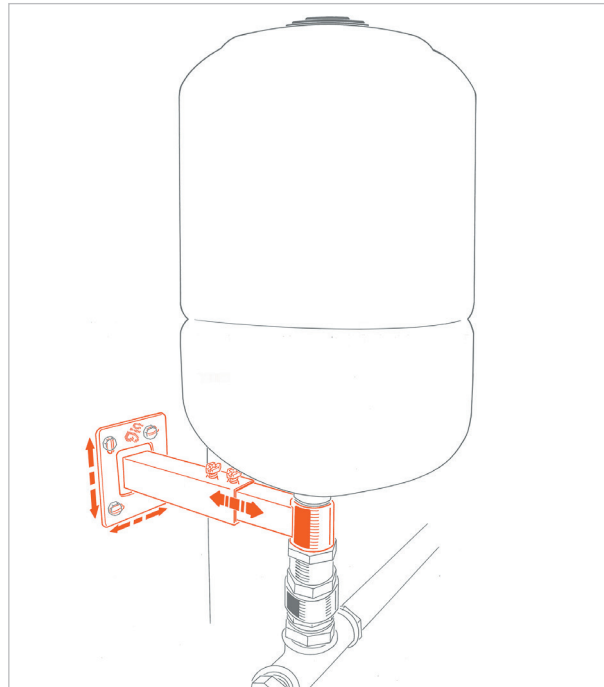
Bracket for expansion vessels

APPLICATION

Used to fasten and install expansion vessels for heating systems.

FEATURES AND BENEFITS

- > **Solid bracket** with sleeve's automated welding.
- > It is possible to **adjust the distance from the wall** from 160 mm up to 220 mm.
- > High payload, **for vessels up to 50 liters**.
- > Provided with base plate with **extended holes** to guarantee a handy fixing.
- > **Sleeve's joint** available from 3/4" to 1".



COD	TYPE	Application	A	B	C	D	E	G	H
075510	SUV 3/4"	Heating systems	160-220	95	87	3	G 3/4" F	9x15	36
075520	SUV 1"	Heating systems	160-220	95	87	3	G 1" F	9x15	43

FIXING'S ACCESSORIES

BRACKETS FOR EXPANSION VESSELS

MATERIALS TECHNICAL DATA

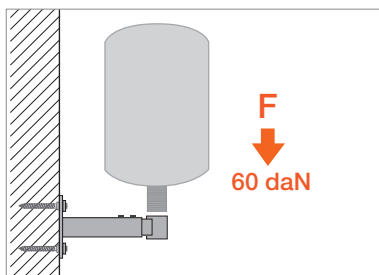
MATERIAL

Steel DD11 EN 10111 with electro zinc plating 7-8 μm

SCREWS

Steel 4.8 EN ISO 898.1 with electro zinc plating 7-8 μm - Hex head combined shear screws

RECOMMENDED LOADS



TYPE	F
SUV 3/4"	60
SUV 1"	60

Recommended load is the average resistance loads with a safety coefficient.
1 daN=1kg.

INSTALLATION

Easier vessel's installation:

1. Fix the plate to the wall
2. Fasten the vessel on the telescopic arm
3. Insert the telescopic arm and pinpoint adjust it

PACKAGING

In cardboard box

RELATED ITEMS

> Anchors: Giolli, 10TB, TCO, TLA, TBF

DATE 11-2022 REV. 01

The current technical data sheet substitutes and nullifies the previous ones. Information correspond with our current knowledge of the product. It cannot lead us to any sort of responsibility or compensation.

Gia S.p.A. reserves the right of changing technical features and molds without previous notice.

Company under the management of "Ethica Global Investments S.p.A."

Gia S.p.A. – Via Sac. A. Cremona, 12 – 28069 Trecate (NO) – www.gia.it