



Heavy duty pipe clamp

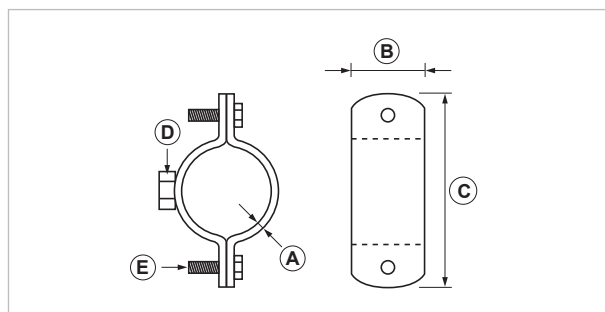
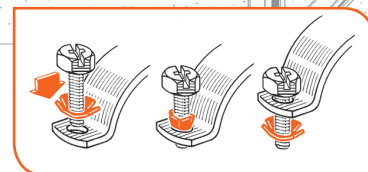
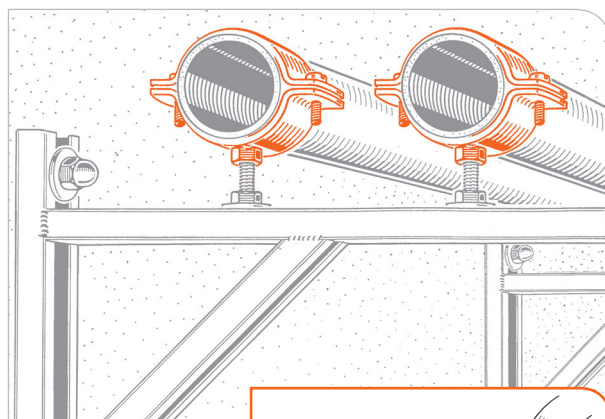
APPLICATION

Used for heavy duty pipe lines fastening and pipe lines fastening in general.

Suitable for pipe lines fastening on wall, ceiling or floor, together with the use of screws or threaded rods.

FEATURES AND BENEFITS

- > The **red washer** - preassembled on the locking screws - prevents them from getting lost during the installation.
- > Electro-welded nut, band size, edging and galvanized finish of all the components make the product extremely **strong** and particularly **resistant** to damage caused by the outdoor agents. It also guarantee a **perfect aesthetic result**.



COD	TYPE	For pipe lines Ø mm	A	B	C	D	E	Notes
082000	STO1 3/8"	17-19	2,5	20	53	M8	M6x20	
082100	STO1 1/2"	20-24	2,5	20	58	M8	M6x20	
082200	STO1 3/4"	26-29	3	20	64	M8	M6x20	
082300	STO1 1"	32-36	3	20	72	M8	M6x20	
082400	STO1 1 1/4"	40-44	3	20	81	M8	M6x20	
082500	STO1 1 1/2"	46-50	3	20	88	M8	M6x20	
082550	STO1 54	50-56	3	20	96	M8	M6x20	
082600	STO1 2"	58-61	3	20	98	M8	M6x20	
082700	STO1 2 1/2"	72-78	3	30	126	M10	M6x20	
082800	STO1 3"	86-90	3	30	137	M10	M6x20	
082850	STO1 3 1/2"	96-104	3	30	150	M10	M6x20	
082900	STO1 4"	110-116	3	30	163	M10	M6x20	
082930	STO1 5"	135-142	4	40	218	1/2"	M8x35	* / **
082950	STO1 6"	164-170	4	40	247	1/2"	M8x35	* / **
082970	STO1 8"	213-224	4	40	306	1/2"	M8x35	* / **
082990	STO1 10"	269-274	4	40	350	1/2"	M8x40	

*Side screws without red washer and supplied with a lock nut / ** Continuous wire welded pipe clamp connection.





MATERIALS TECHNICAL DATA

BASE MATERIAL

Concrete | Solid or hollow brick

PIPE CLAMP MATERIAL

Steel DD11 EN 10111 (material n. 1.0332) with electro zinc plating 7-8 µm

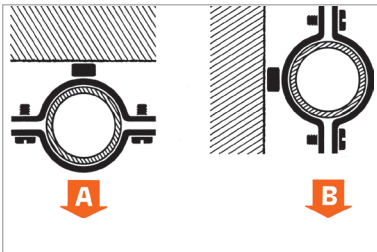
TE COMBINED SHEAR SCREWS - NUTS

Steel 4.8 EN ISO 898.1

COMPONENTS ZINC PLATING

Electro 7-8 µm

RECOMMENDED LOADS



TYPE	A	B
STO - STO1 3/8"	200	100
STO - STO1 1/2"	200	100
STO - STO1 3/4"	250	100
STO - STO1 1"	250	100
STO - STO1 1 1/4"	250	100
STO - STO1 1 1/2"	250	100
STO1 54	250	100
STO - STO1 2"	300	100

TYPE	A	B
STO - STO1 2 1/2"	300	100
STO - STO1 3"	300	70
STO - STO1 3 1/2"	300	70
STO - STO1 4"	300	70
STO1 5"	400	120
STO1 6"	400	100
STO1 8"	400	90
STO1 10"	400	70

Tests carried out in technical laboratory with a dynamometric machine. For wall fixing, stick to the strength characteristics of the plug or the connecting support.

Recommended load is the average resistance loads with a safety coefficient. 1 daN=1 kg.

PACKAGING

In plastic bag | Couple of pipe clamps

RELATED ITEMS

- > PG - EPDM insulating sheath
- > PGS - Silicone insulating sheath
- > TNF and TF - Screw and plug
- > Reduction piece - Type A
- > BF - Threaded rod

DATE 03-2019 REV. 00

The current technical data sheet substitutes and cancels the previous ones. Information correspond with our current knowledge of the product. It cannot lead us to any sort of responsibility or compensation.

Gia S.p.A. reserves the right of changing technical features and molds without notice.

Gia S.p.A. – Via Sac. A. Cremona, 12 – 28069 Trecate (NO) – www.gia.it

T 03.14.63 REV 0

