

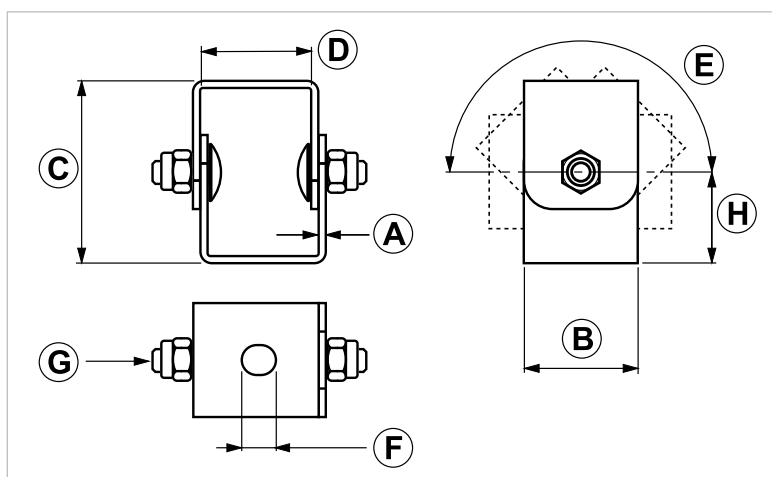
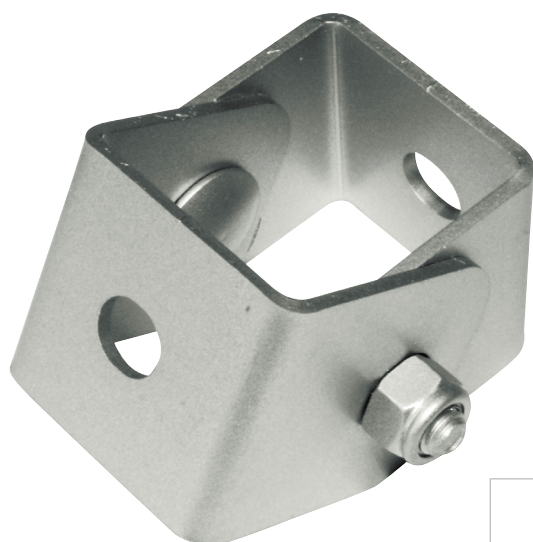
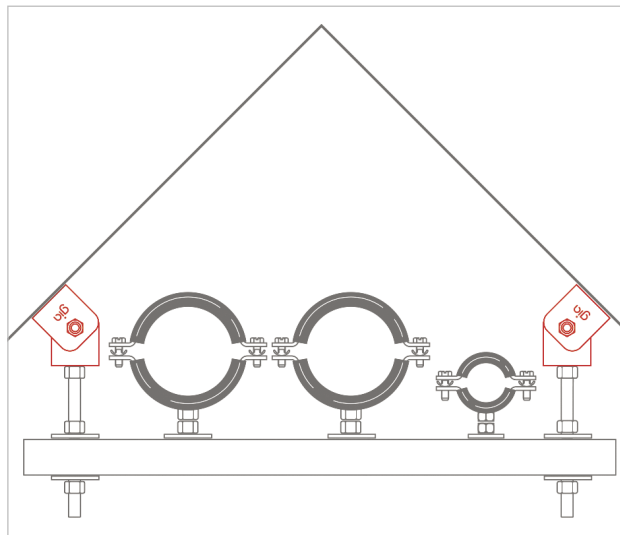
SSU Universal swivel hinge bracket

APPLICATION

Hinge hanging bracket which can be adjusted up to 180° in order to anchor it on walls or sloping surfaces.

FEATURES AND BENEFITS

- > The angle - at which the installation is set - is locked thanks to **the self-locking nuts**.
- > It is complete with holes for either **M10 or M8 threaded rods**.
- > In case of hanging strut channels it helps to **fight axial and lateral forces**. It can also be used to set up sloping structures in order to **fasten thermal solar systems or photovoltaic systems**.
- > The **hinge effect** is guaranteed by the M8 flat head bolts with self-locking nuts.



COD	Type	A	B	C	D	E	F	G	H
161750	SSU	2,5	40	64	39	180°	10,5x12	M8	32

INDUSTRIAL FIXING SYSTEMS

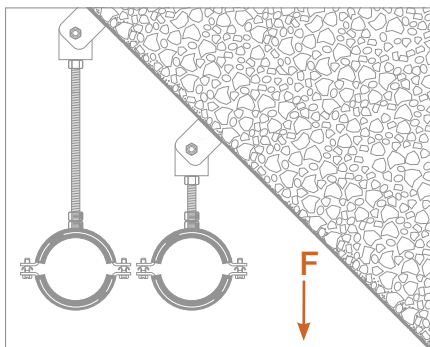
ANGLE BRACKETS AND FITTINGS FOR HEAVY DUTY STRUT CHANNELS

MATERIALS TECHNICAL DATA

BRACKET

Steel DD11 EN 10111 with electro zinc plating 7-8 μm

RECOMMENDED LOADS



TYPE	F
SSU	200

Recommended load is the average resistance load with a safety coefficient.

1 daN=1 kg

PACKAGING

In cardboard box

RELATED ITEMS

- > Threaded rods
- > Pipe clamps

DATE 07-2023 REV. 01

The current technical data sheet substitutes and cancels the previous ones. The details provided fit our current knowledge of the product. It cannot lead us to any sort of responsibility or compensation.

Gia S.p.A. reserves the right of changing technical features and molds without notice.

This company is subject to "Ethica Global Investments S.p.A." management.

Gia S.p.A. – Via Sac. A. Cremona, 12 – 28069 Trecate (NO) – www.gia.it