

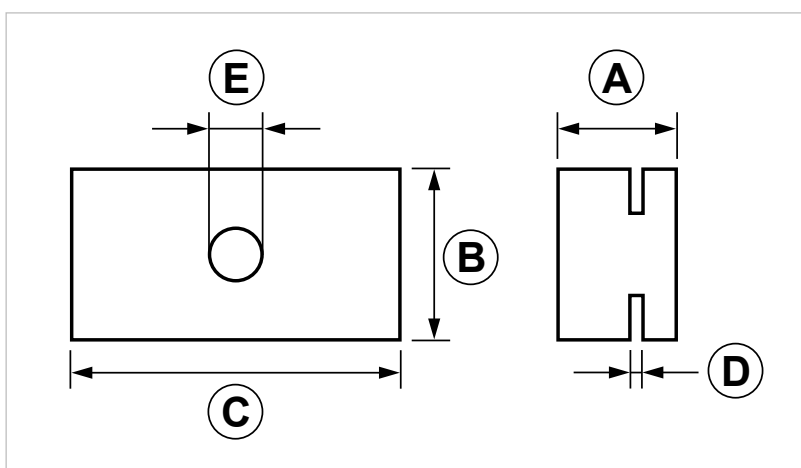
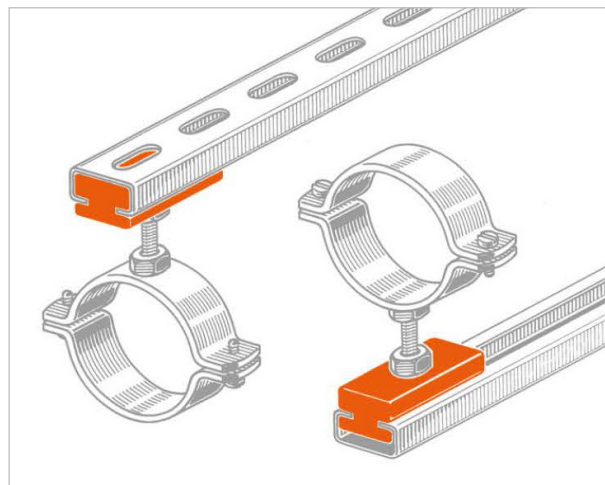
SPF Sliding glide

APPLICATION

Sliding fixing for pipe lines that are subject to expansion.

FEATURES AND BENEFITS

- > It is to be inserted into **PF or PF INOX strut channels** to create a **sliding support** for light duty payloads.
- > It is perfect when the stress acting on the pipe lines mustn't affect the anchoring point.
- > It is made of **nylon - reinforced with glass fibers** - that **reduces idle friction** with the guiding strut channel.



COD	TYPE	A	B	C	D	E
165010	SPF	18	26	50	2	M8

GRIP LIGHT DUTY FIXING SYSTEM

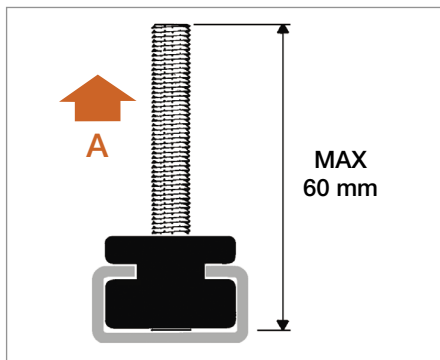
CONNECTION ACCESSORIES

MATERIALS TECHNICAL DATA

SLIDING GLIDE

PA6 reinforced with 30% glass fibers

RECOMMENDED LOADS



TYPE	On ceiling	On wall
SPF	60	50

Recommended load is the average resistance loads with a safety coefficient.

1 daN=1 kg.

The sliding length changes according to the strut channel's length.
Max Ø 2" for pipe lines.

Always check the bending moment of the connection systems.

INSTALLATION TOOLS AND RECOMMENDATIONS

The threaded rod must go through the sliding fixing.

Its length must not be > 60mm.

PACKAGING

In cardboard box

DATE 06-2023 REV. 01

The current technical data sheet substitutes and cancels the previous ones. The details provided fit our current knowledge of the product. It cannot lead us to any sort of responsibility or compensation.

Gia S.p.A. reserves the right of changing technical features and molds without notice.

This company is subject to "Ethica Global Investments S.p.A." management.

Gia S.p.A. – Via Sac. A. Cremona, 12 – 28069 Trecate (NO) – www.gia.it