

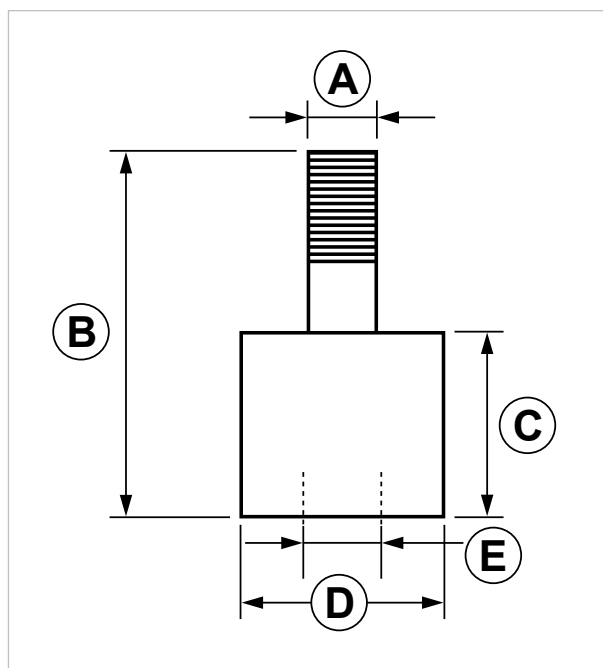
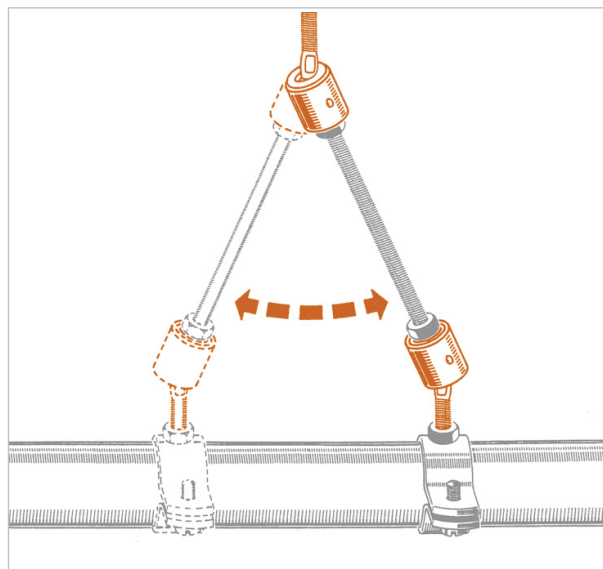
## SNO Swivel rod hanger

### APPLICATION

Joint for hanging installations.

### FEATURES AND BENEFITS

- > When set in hanging fixings it allows **small and medium expansions**.
- > When pipe lines are subject to great stress, **it prevents from weighing on the anchoring point**.



COD	Type	A	B	C	D	E
163320	SNO 8	M8	54	20	22	M8
163520	SNO 10	M10	54	20	22	M10

# INDUSTRIAL FIXING SYSTEMS

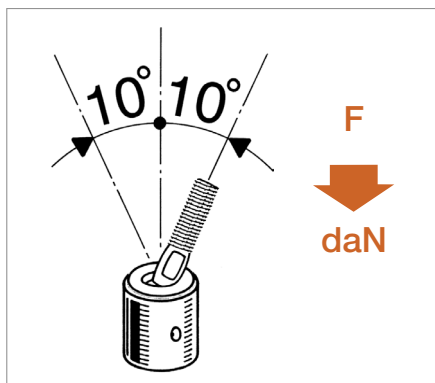
## SLIDING FITTINGS AND ACCESSORIES

### MATERIALS TECHNICAL DATA

#### BRACKET

Steel DD11 EN 10111 with electro zinc plating 7-8  $\mu\text{m}$

#### RECOMMENDED LOADS



TYPE	F
SNO 8	300
SNO 10	400

Recommended load is the average resistance load with a safety coefficient.

1 daN=1 kg

#### PACKAGING

In cardboard box

#### RELATED ITEMS

- > Threaded rods
- > Pipe clamps

#### DATE 07-2023 REV. 01

The current technical data sheet substitutes and cancels the previous ones. The details provided fit our current knowledge of the product. It cannot lead us to any sort of responsibility or compensation.

Gia S.p.A. reserves the right of changing technical features and molds without notice.

This company is subject to "Ethica Global Investments S.p.A." management.

Gia S.p.A. – Via Sac. A. Cremona, 12 – 28069 Trecate (NO) – [www.gia.it](http://www.gia.it)