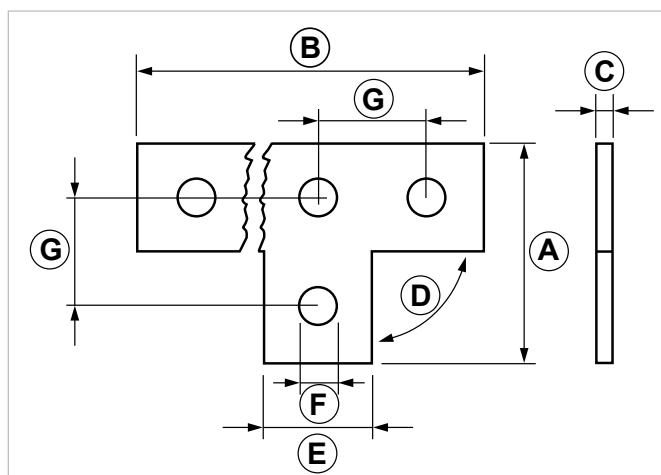
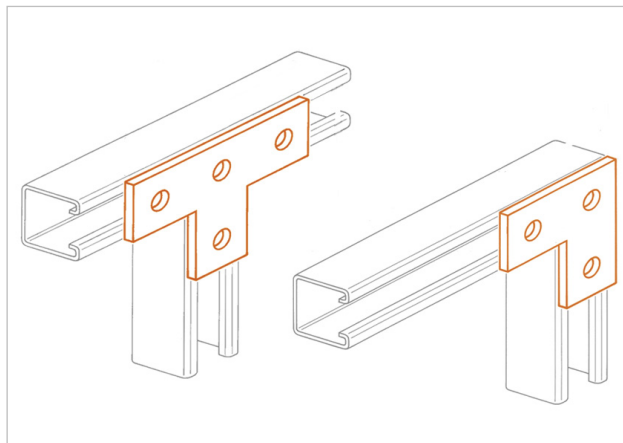


SHAPED FITTING PLATE for heavy duty strut channels

APPLICATION

It is used to join PF3 and PF4 strut channels.



COD	Type	Description	A	B	C	D	E	F	G
161490	R 10	3 fori	88	88	6	90	40	14	48
161540	R 15	4 fori	88	136	6	90	40	14	48

INDUSTRIAL FIXING SYSTEMS

ANGLE BRACKETS AND FITTINGS FOR HEAVY DUTY STRUT CHANNELS

MATERIALS TECHNICAL DATA

PLATE

Steel DD11 EN 10111 with electro zinc-plating 7-8 µm

PACKAGING

In cardboard box

RELATED ITEMS

- > Heavy duty strut channels
- > Threaded rods
- > Pipe clamps

DATE 07-2023 REV. 01

The current technical data sheet substitutes and cancels the previous ones. The details provided fit our current knowledge of the product. It cannot lead us to any sort of responsibility or compensation.

Gia S.p.A. reserves the right of changing technical features and molds without notice.

This company is subject to "Ethica Global Investments S.p.A." management.

Gia S.p.A. – Via Sac. A. Cremona, 12 – 28069 Trecate (NO) – www.gia.it