

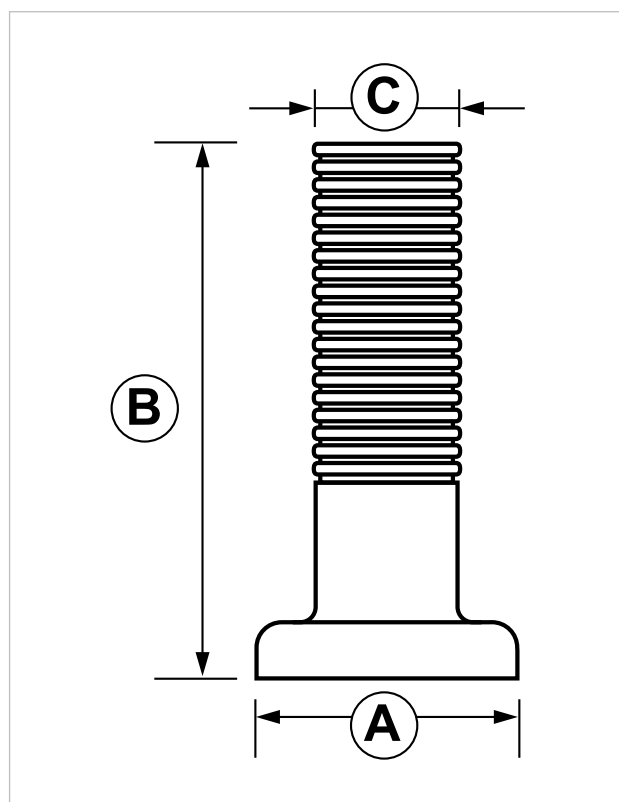
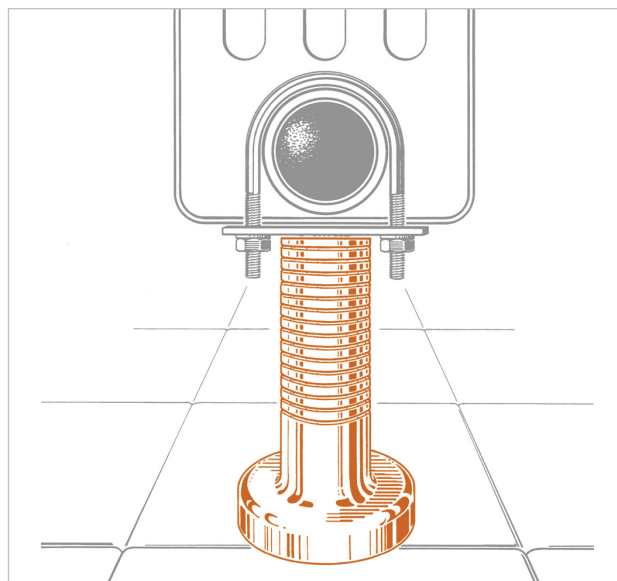
### Covering shell for radiators floor support

#### APPLICATION

Used as finishing for MP, MP1, MP2 floor supports.

#### FEATURES AND BENEFITS

- > It guarantees **the best aesthetic result.**
- > Thanks to the **rings on its body** the item can be easily cut at the right size in order to perfectly fit the floor support.
- > It is made up of **two half-shells** that have to be assembled.
- > Available in two versions: **chrome plated and white painted.**



COD	TYPE	Application	Finishing	A	B	C
018010	SCO	For MP / MP1 / MP2 floor supports	chrome plated	84	175	48
018011	SCO 1	For MP / MP1 / MP2 floor supports	white painted	84	175	48

# RADIATOR FLOOR SUPPORTS AND ACCESSORIES

## RADIATORS FIXINGS

### MATERIALS TECHNICAL DATA

#### COVERING SHELL

Plastic material (ABS)

#### DATE 05-2022 REV. 00

The current technical data sheet substitutes and nullifies the previous ones. Information correspond with our current knowledge of the product. It cannot lead us to any sort of responsibility or compensation.

Gia S.p.A. reserves the right of changing technical features and molds without previous notice.

Gia S.p.A. – Via Sac. A. Cremona, 12 – 28069 Trecate (NO) – [www.gia.it](http://www.gia.it)