

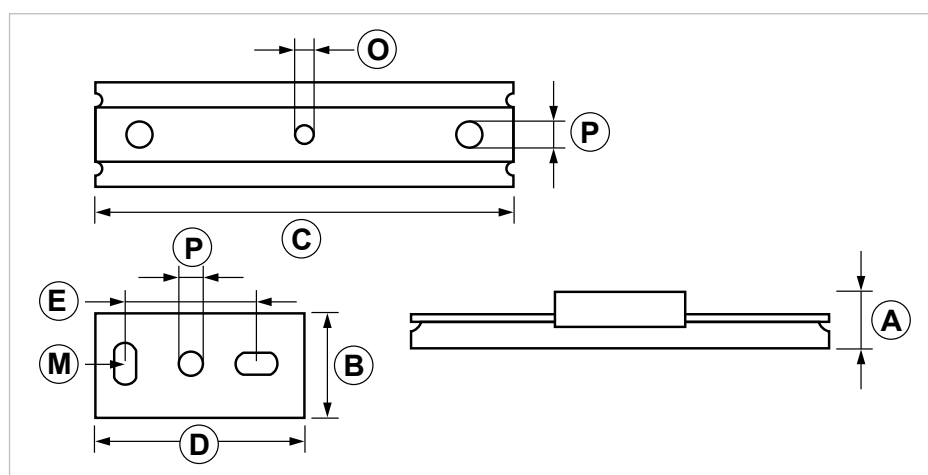
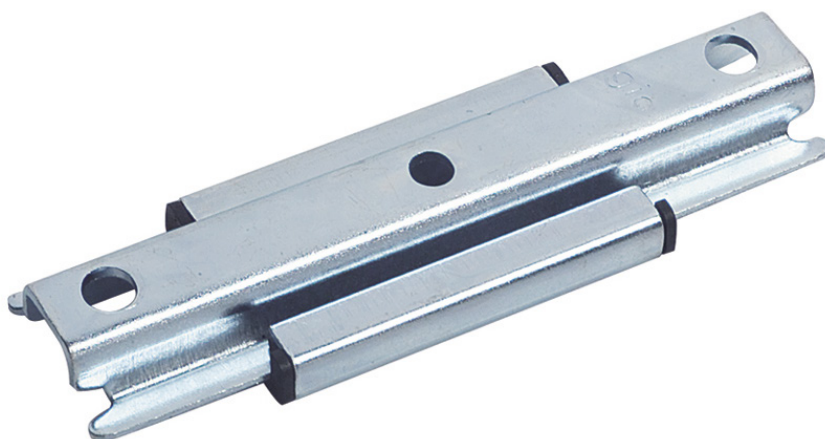
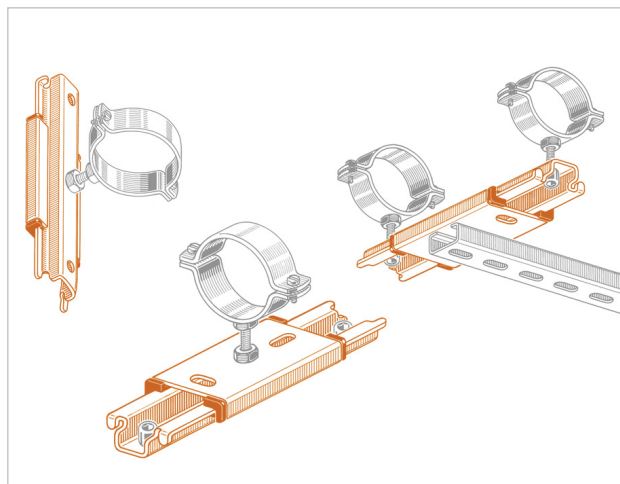
SC Sliding guide rail

APPLICATION

Fixing item provided with a sliding support, that is used to absorb axial expansions of pipe lines. It can be used either on horizontal, vertical or hanging lines.

FEATURES AND BENEFITS

- > It is to be applied on strut channels when pipe lines are subject to great stress, in order **to prevent it from weighing on the anchoring point**.
- > It is suitable **for all main kinds of pipe clamps**.
- > The anchoring points of the sliding guide are provided complete with **nylon slides** in order **to reduce friction** even when heavy duty loads are applied on it.



COD	Type	A	B	C	D	E	M	O	P
165000	SC	27	63	200	100	69	20x10,5	10,5	12,5

INDUSTRIAL FIXING SYSTEMS

SLIDING FITTINGS AND ACCESSORIES

MATERIALS TECHNICAL DATA

SLIDING GUIDE

Steel DD11 EN 10111 with electro zinc-plating 7-8 μm

SLIDES

Nylon reinforced with fiberglass

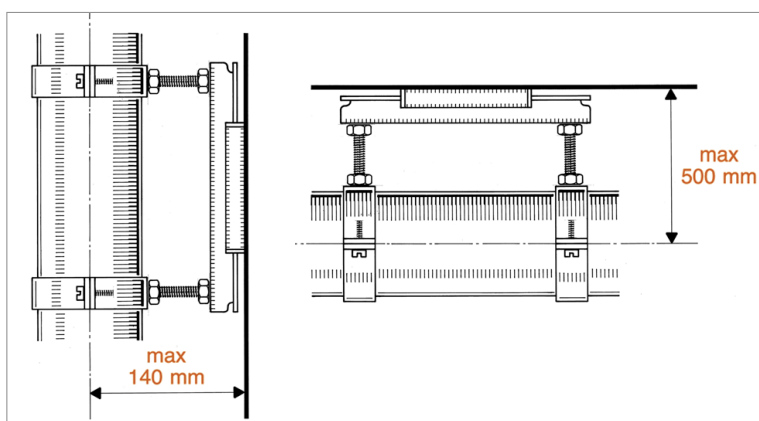
TEMPERATURE

From -30°C up to 120°C

SLIDING LENGTH

80 mm

RECOMMENDED LOADS



TYPE	On ceiling	On wall
SC	130	100

Recommended load is the average resistance load with a safety coefficient.
1 daN=1 kg

Max. sliding length 80mm
For pipe lines with \varnothing max 4"
Make sure to always check the bending moment of the connection units.

INSTALLATION TOOLS AND RECOMMENDATIONS

Make sure to install the item by considering the expansion range of the pipe line, in order to prevent the sliding guide from getting to the end of the line.

PACKAGING

In cardboard box

RELATED ITEMS

- > JDA - Quick connection nut
- > Strut channels
- > Pipe clamps

DATE 07-2023 REV. 01

The current technical data sheet substitutes and cancels the previous ones. The details provided fit our current knowledge of the product. It cannot lead us to any sort of responsibility or compensation.

Gia S.p.A. reserves the right of changing technical features and molds without notice.

This company is subject to "Ethica Global Investments S.p.A." management.

Gia S.p.A. – Via Sac. A. Cremona, 12 – 28069 Trecate (NO) – www.gia.it