

SAT2

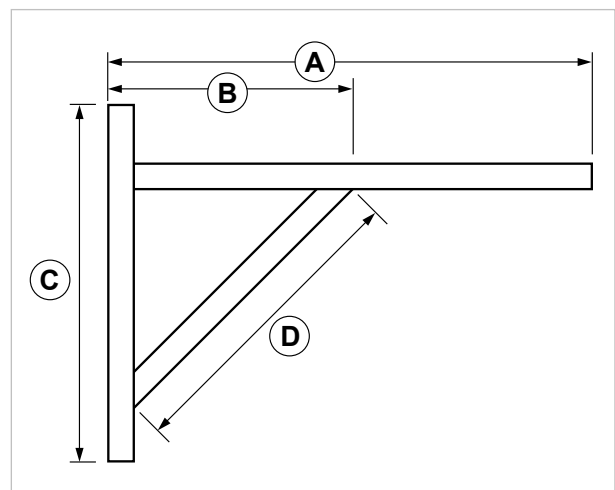
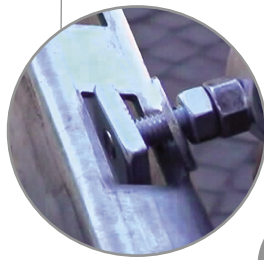
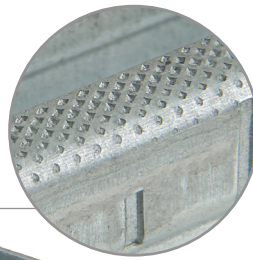
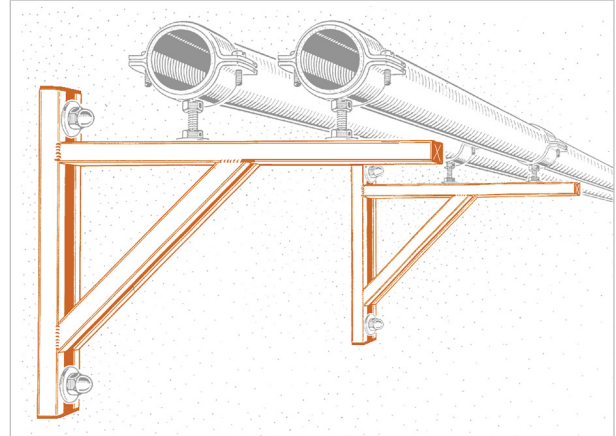
Grip long angle bracket

APPLICATION

Used to fasten pipe lines and devices on the wall.

FEATURES AND BENEFITS

- > The **patented knurling** applied to the rail sides - both inside and outside - prevents connection parts from sliding.
- > Thanks to its **28x15 mm rectangular loops** and the 50mm centre to centre distance, it is possible to insert connection items even during installation.
- > It is made of **PF2 grip strut channel** and complete with **3 closing caps**.



COD	TYPE	Finishing	Strut channel	A	B	C	D
161270	SAT2 GRIP	Galvanized	PF2 Grip	880	510	450	580

GRIP LIGHT DUTY FIXING SYSTEM

SUPPORTING BRACKETS

MATERIALS TECHNICAL DATA

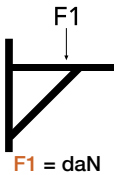
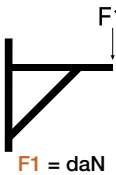
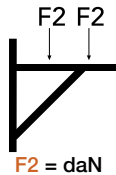
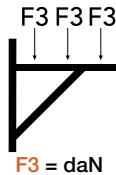
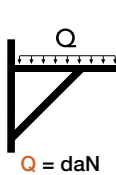
BRACKET

Steel DD11 EN 10111 with thermal galvanization 50 µm

CAPS

PE Polyethylene

RECOMMENDED LOADS

TYPE	 F1 = daN	 F1 = daN	 F2 = daN	 F3 = daN	 Q = daN
SAT2 GRIP	250	50	125	85	200

F = concentrated load in daN. - **Q** = uniform load in daN.

Admissible tension 140 N/mm². - Admissible deflection L/125.

For wall fastening please consider the supporting performance of the plug or the connection piece.

PACKAGING

In cardboard box

RELATED ITEMS

- > Pipe clamps
- > BF - Threaded rod

DATE 06-2023 REV. 01

The current technical data sheet substitutes and cancels the previous ones. The details provided fit our current knowledge of the product. It cannot lead us to any sort of responsibility or compensation.

Gia S.p.A. reserves the right of changing technical features and molds without notice.

This company is subject to "Ethica Global Investments S.p.A." management.

Gia S.p.A. – Via Sac. A. Cremona, 12 – 28069 Trecate (NO) – www.gia.it