



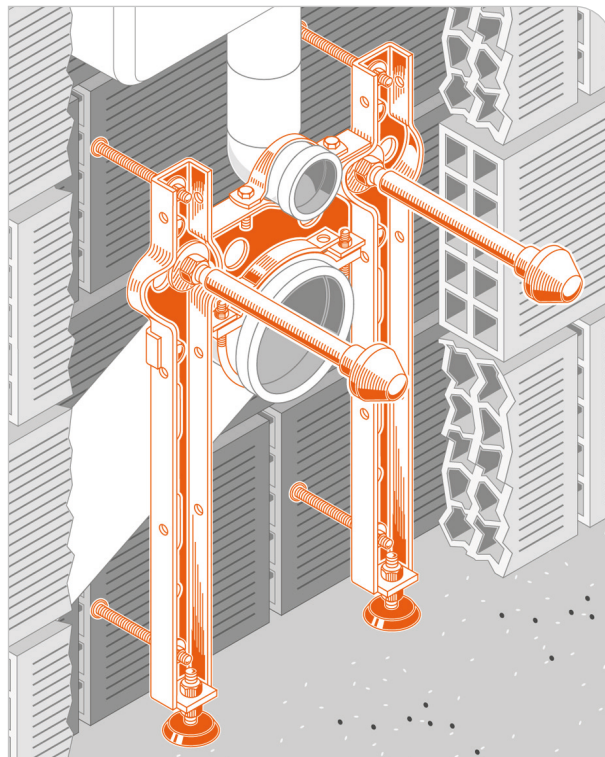
ROSSA - Universal preassembled bracket for wall hung wc

APPLICATION

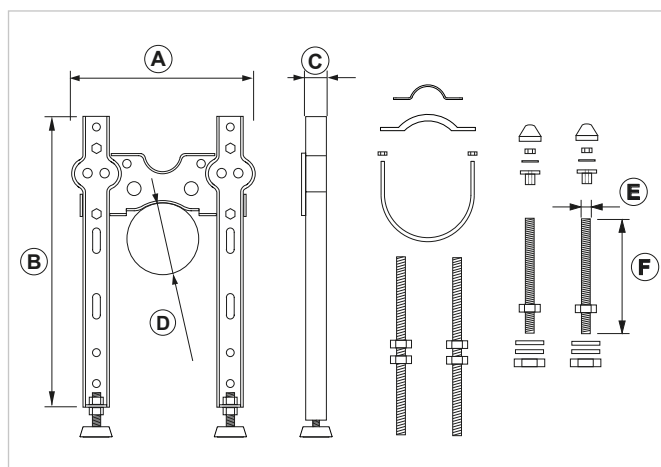
Wall hung wc fastening and installation on **masonry**.

FEATURES AND BENEFITS

- > **Fast application: preassembled** and ready to use.
- > Suitable for center-to-center distance support between 180 mm and 230 mm.
- > Complete with **shaped support for drainage pipe lines** of 90 mm and 110 mm.
- > It is designed to bear a **load of 400 kg**, according to the UNI EN 997 and UNI 8950/2 regulations for wall hung wc and bidet.
- > **Assembly instructions** - included in every package - are constantly updated and provided with the **installation measures of more than 300 sanitary designs**.



EXTRA
STRONG



| COD | TYPE | A | B | C | D | E | F |
|--------|-------|-----|-----|------|--------|-----|-----|
| 020502 | ROSSA | 280 | 462 | 33,5 | 90-110 | M12 | 180 |



Composed of:

- red painted plate and bracket
- special pipe clamp for drainage pipe installation
- threaded rods, nuts and plugs to adjust the bracket's distance from the wall
- Nylon washers
- galvanized nuts and washers to fasten the item
- M12 supporting rods complete with nuts and washers
- base supports for height adjustment

MATERIALS TECHNICAL DATA

BRACKET

Red painted carbon steel DD11 EN 10111

COMPONENTS

Carbon steel 4.8 EN ISO 898.1 with electro zinc plating 7-8 µm

PLUG

PP Polypropylene

WASHERS

White Nylon PA6

CAPS

PE Polyethylene

BASE MATERIAL

Concrete | Masonry

INSTALLATION

In order to install the product properly, please follow the instructions included in the box. They also include the dimensions needed to set the sanitary fixtures of the major producing companies.

PACKAGING

In cardboard box | 1 item

RELATED ITEM

- > PSS - Floor support
- > PRO - Bracket extension
- > SIN 180-230 - Kit for hole centre to centre distance
- > CAP - Fixing kit

DATE 09-2020 REV. 01

The current technical data sheet substitutes and cancels the previous ones. Information correspond with our current knowledge of the product. It cannot lead us to any sort of responsibility or compensation.

Gia S.p.A. reserves the right of changing technical features and molds without notice.

Gia S.p.A. – Via Sac. A. Cremona, 12 – 28069 Trecate (NO) – www.gia.it

T 02.10.27 REV 01

