

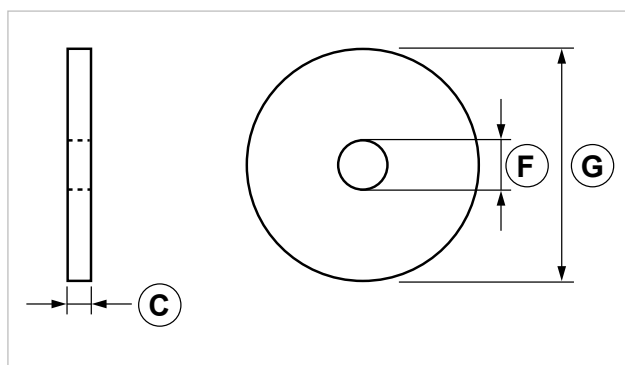
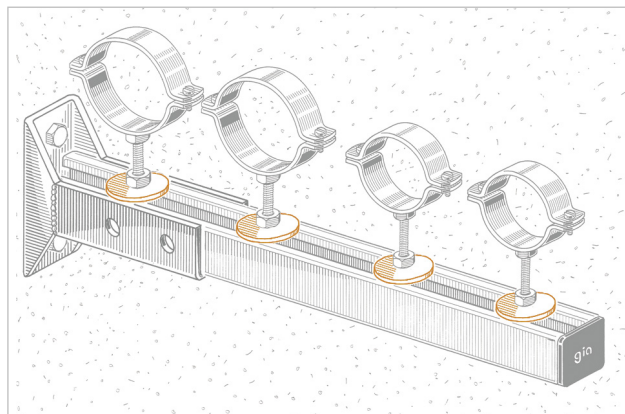
### ROP Heavy duty washer

#### APPLICATION

Used for connections on PF3 and PF4 strut channels.

#### FEATURES AND BENEFITS

> Increased washer.



COD	TYPE	C	F	G
164101	ROP 8	3	8,5	40
164201	ROP 10	3	10,5	40

#### MATERIALS TECHNICAL DATA

##### WASHER

Steel DD11 EN 10111 with electro zinc plating 7-8 µm

#### PACKAGING

In polyethylene bags

#### RELATED ITEMS

- > PF3 and PF4 strut channels
- > Pipe clamps

#### DATE 06-2023 REV. 00

The current technical data sheet substitutes and cancels the previous ones. The details provided fit our current knowledge of the product. It cannot lead us to any sort of responsibility or compensation.

Gia S.p.A. reserves the right of changing technical features and molds without notice.

This company is subject to "Ethica Global Investments S.p.A." management.

Gia S.p.A. – Via Sac. A. Cremona, 12 – 28069 Trecate (NO) – [www.gia.it](http://www.gia.it)