

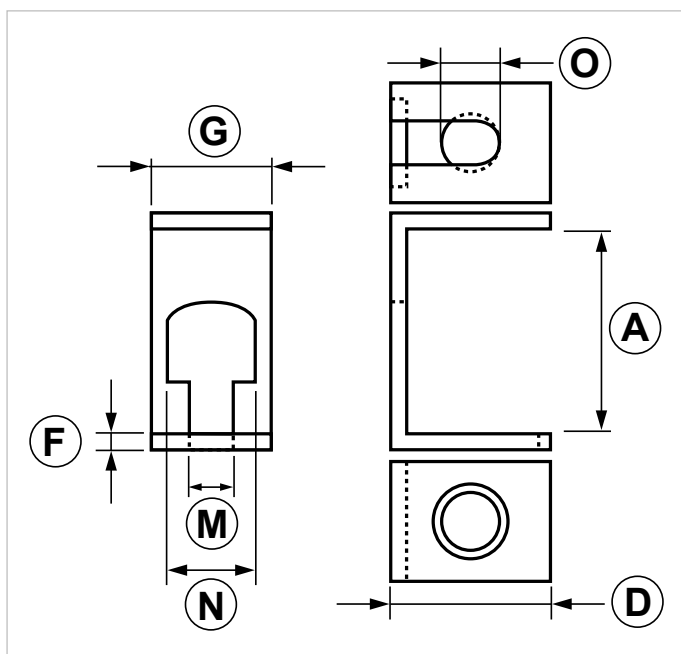
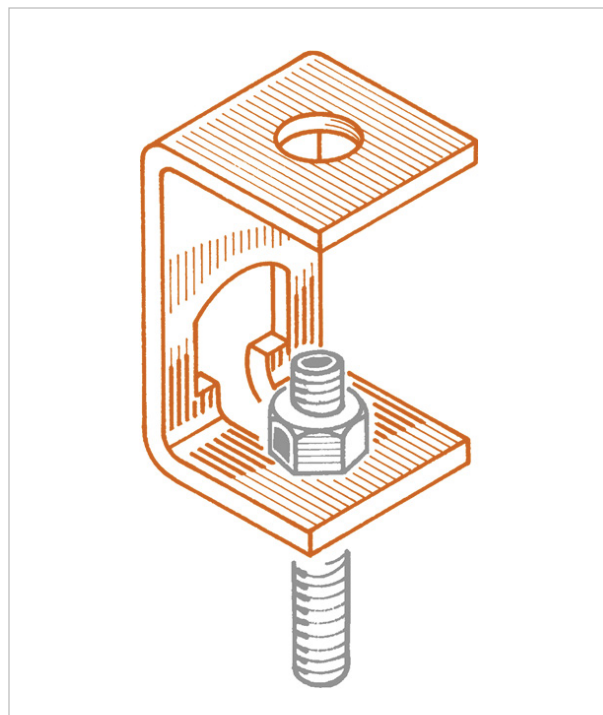
#### RDA Height regulator

##### APPLICATION

It is used to adjust hanging supports' height by using a threaded rod.

##### FEATURES AND BENEFITS

- > **Easy to adjust, it simplifies the fastening** of the threaded rod and the supporting nut.
- > Thanks to this item it is possible **to adjust the system's tolerance easily.**



COD	TYPE	A	D	F	G	M	N	O
161700	RDA	58,5	40	4	36	11	22	14,5

# SHARED ACCESSORIES FOR INDUSTRIAL FIXING SYSTEMS

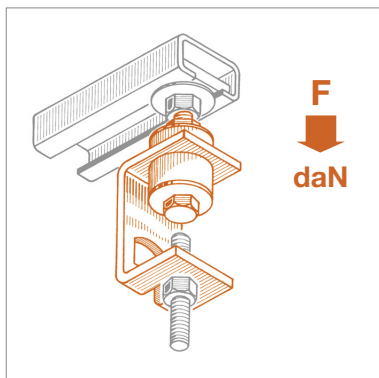
## HANGING SUPPORTS

### MATERIALS TECHNICAL DATA

#### HANGER

Steel DD11 EN 10111 with electro zinc plating 7-8 µm

#### RECOMMENDED LOADS



TYPE	F
RDA	100

Recommended load is the average resistance loads with a safety coefficient.

Data provided in daN.

1daN=1kg.

#### PACKAGING

In cardboard box

#### RELATED ITEMS

- > SSU - Universal swivel hanger
- > RDA S - Insulated height regulator
- > Threaded rod

#### DATE 05-2023 REV. 01

The current technical data sheet substitutes and nullifies the previous ones. Information correspond with our current knowledge of the product. It cannot lead us to any sort of responsibility or compensation.

Gia S.p.A. reserves the right of changing technical features and molds without previous notice.

Company under the management of "Ethica Global Investments S.p.A."

Gia S.p.A. – Via Sac. A. Cremona, 12 – 28069 Trecate (NO) – [www.gia.it](http://www.gia.it)