

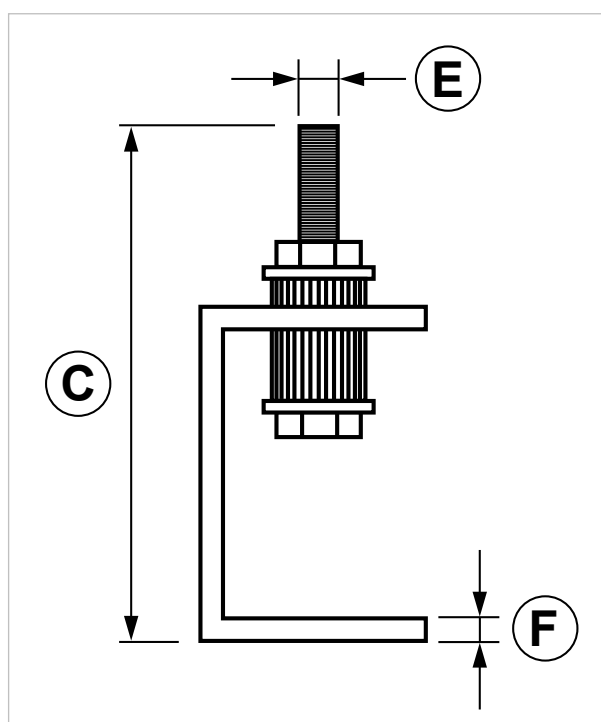
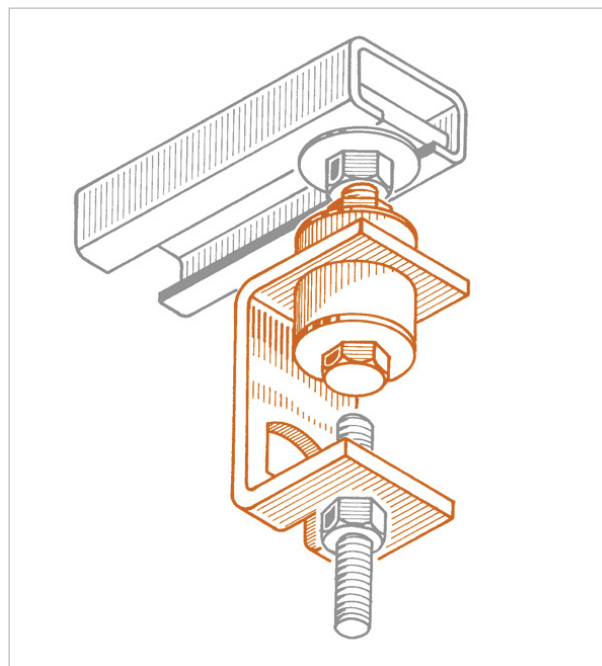
RDA S Insulated height regulator

APPLICATION

Insulated fixing which allows to adjust hanging support's height up to M10.

FEATURES AND BENEFITS

- > The black EPDM sheath ensures **thermal insulation** between the support and the fixing item, while guaranteeing **noise spread reduction**. They can be used with temperatures included between -30°C and +115°C.
- > The item is provided **already mounted**.



COD	TYPE	C	F	E
161710	RDA S	105	4	M10

SHARED ACCESSORIES FOR INDUSTRIAL FIXING SYSTEMS

HANGING SUPPORTS

MATERIAL TECHNICAL DATA

HANGER

Steel DD11 EN 10111 with electro zinc plating 7-8 µm

SHEATH

Black EPDM rubber

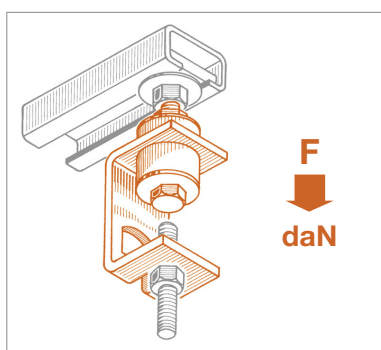
TEMPERATURE

-30°C / +115°C

HARDNESS

55° +/- Shore A

RECOMMENDED LOADS



TYPE	F
RDA S	60

Recommended load is the average resistance loads with a safety coefficient.
Data provided in daN.
1daN=1kg.

PACKAGING

In cardboard box

RELATED ITEMS

- > SSU - Universal swivel hanger
- > RDA - Height regulator
- > Threaded rod

DATE 05-2023 REV. 01

The current technical data sheet substitutes and nullifies the previous ones. Information correspond with our current knowledge of the product. It cannot lead us to any sort of responsibility or compensation. Gia S.p.A. reserves the right of changing technical features and molds without previous notice. Company under the management of "Ethica Global Investments S.p.A."

Gia S.p.A. – Via Sac. A. Cremona, 12 – 28069 Trecate (NO) – www.gia.it