



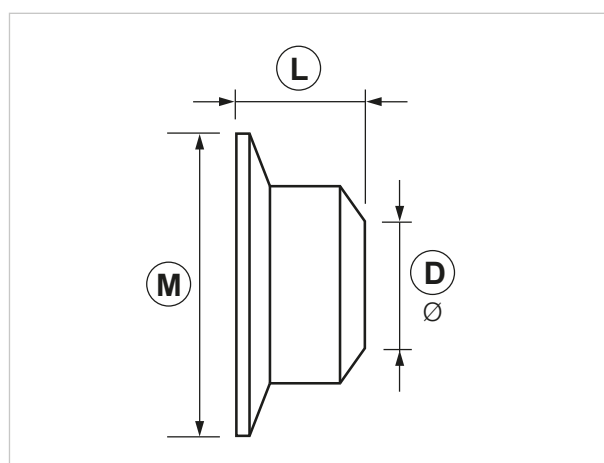
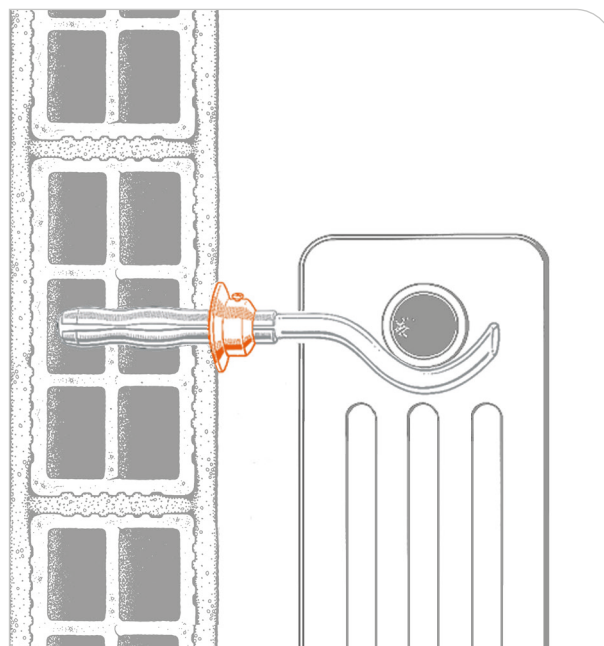
Cover washer for telescopic bracket

APPLICATION

Spare part for telescopic bracket.

FEATURES AND BENEFITS

- > It offers a **good looking result** by covering the imperfections of the hole made on the wall.



COD	TYPE	Application	L	M	D
269000	RAN 10 A	For brackets Ø 7 mm	13	34	10
269001	RAN 12 G	For brackets Ø 9 mm	14	38	12
269002	RAN 15 G	For brackets Ø 12 mm	18	44	15

**MATERIAL TECHNICAL DATA****COVER WASHER**

PE White Polyethylene

DATA 03-2020 REV. 00

The current technical data sheet substitutes and cancels the previous ones. Information correspond with our current knowledge of the product. It cannot lead us to any sort of responsibility or compensation.

Gia S.p.A. reserves the right of changing technical features and molds without notice.

Gia S.p.A. – Via Sac. A. Cremona, 12 – 28069 Trecate (NO) – www.gia.it

T 01.05.15 REV 0

