

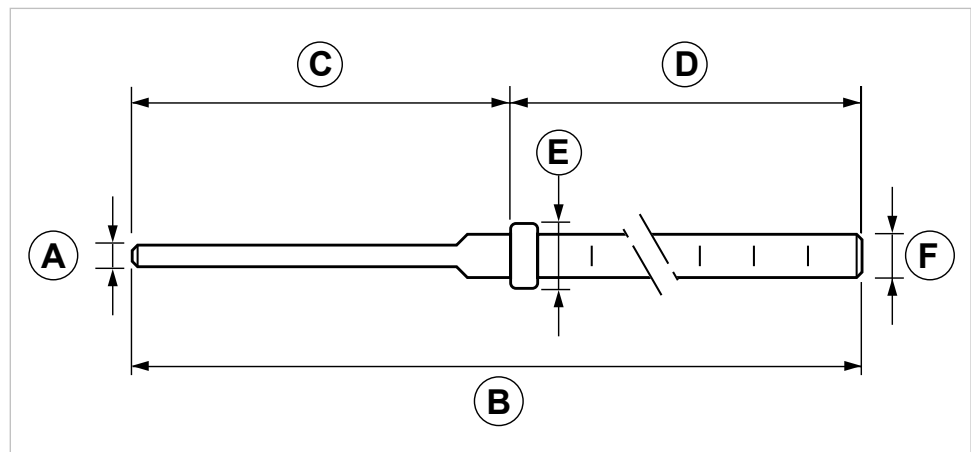
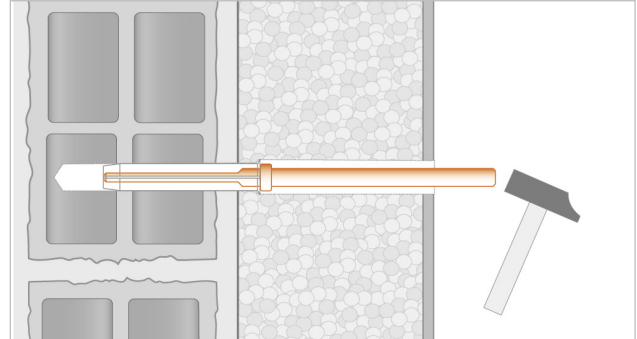
PTN Plug setting tool for insulated walls

APPLICATION

Tool used to insert and guide plug into insulated walls.

FEATURES AND BENEFITS

- > Its shaped tip is particularly suitable for TN plug.
- > Thanks to its measuring body it is possible to check the insulating panel's thickness.



COD	TYPE	Application	A	B	C	D	E	F
120010	PTN 10	For 10TN plug	2,7	275	70	205	11	8
120012	PTN 12	For 12TN plug	4,2	275	70	205	12	8

ANCHORS AND SEALANTS

ANCHORS FOR INSULATED WALLS

MATERIALS TECHNICAL DATA

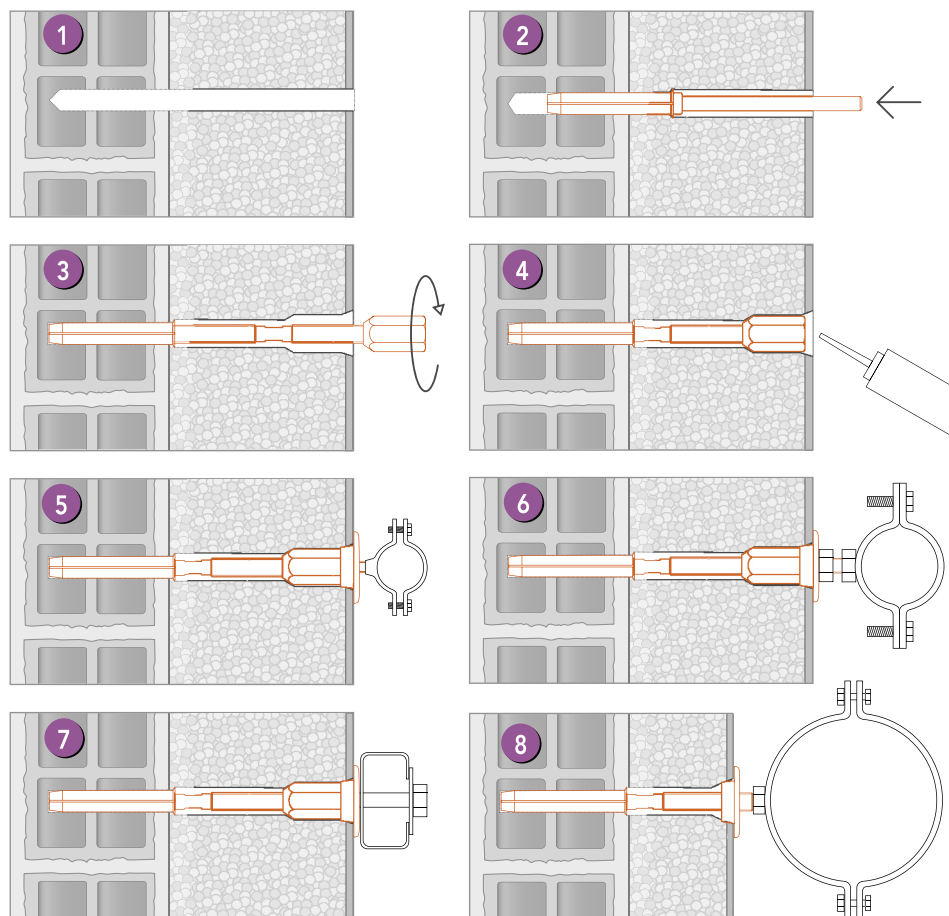
INSERTING TOOL

Tempered carbon steel EN 10027 with electro zinc plating 7-8 µm

BASE MATERIAL

Masonry - EPS and XPS panel

INSTALLATION



WITH ISO 8 AND ISO 10

- 1- Drill insulating panel and wall with a drill bit of:
Ø 10 for ISO 8
Ø 12 for ISO 10
- 2- Insert TN plug using PTN inserting tool
- 3- Tighten the screw either with or without the reduction piece
- 4- Set screw and joint flush the insulating panel and seal the borders. Apply the insulating washer and the covering finish.
- 5- Fasten the product on the external wall using the M6 stud.

MOREOVER WITH ISO 10

- 6- Fasten the product on the external wall using the M8 stud
- 7- It is possible to install it with a bolt
- 8- It is possible to install it with M10

PACKAGING

In cardboard box

RELATED ITEMS

- > ISO 8
- > ISO 10

DATE 06-2023 REV. 01

The current technical data sheet substitutes and cancels the previous ones. The details provided fit our current knowledge of the product. It cannot lead us to any sort of responsibility or compensation.

Gia S.p.A. reserves the right of changing technical features and molds without notice.

This company is subject to "Ethica Global Investments S.p.A." management.

Gia S.p.A. – Via Sac. A. Cremona, 12 – 28069 Trecate (NO) – www.gia.it