

PON S

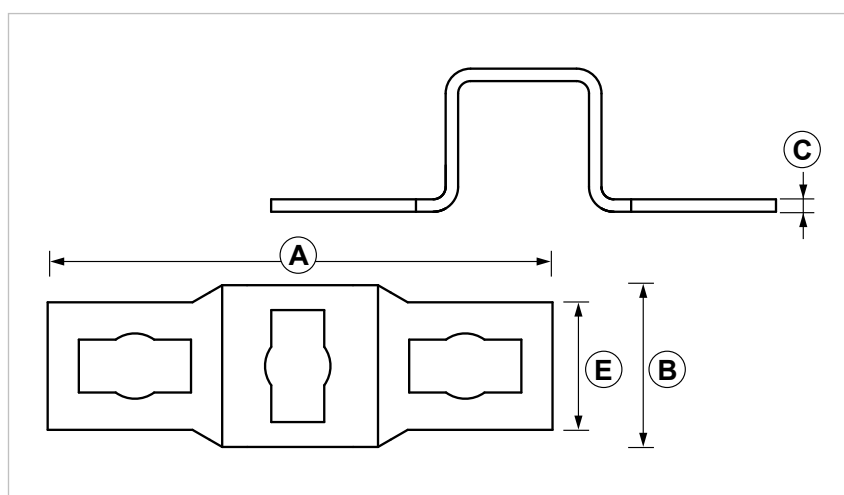
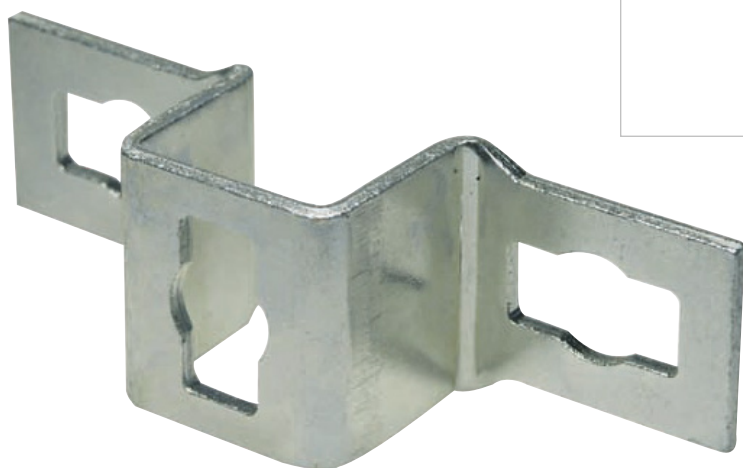
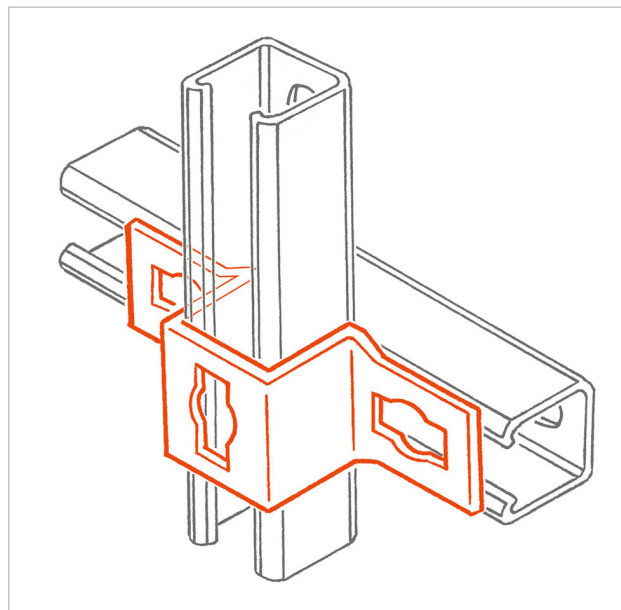
Quick connection U-shaped base fitting

APPLICATION

It is used to set up cross structures without welding.

FEATURES AND BENEFITS

- > The exclusive shape of the loops - designed to fit the so called "JBR 10" bolt (cod. 161950) - makes **connection to the strut channel fast and easy**.
- > It is used to **connect 2 PF3 strut channels crosswise**.



| COD | TYPE | A | B | C | E |
|--------|-------|-----|----|---|----|
| 161550 | PON S | 162 | 52 | 4 | 40 |

INDUSTRIAL FIXING SYSTEMS

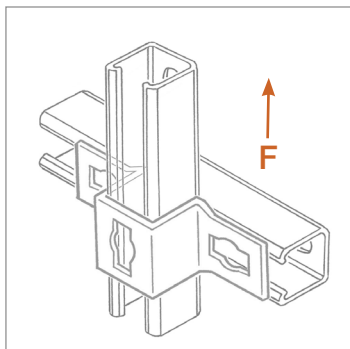
ANGLE BRACKETS AND FITTINGS FOR HEAVY DUTY STRUT CHANNELS

MATERIALS TECHNICAL DATA

ANGLE FITTING

Steel DD11 EN 10111 with electro zinc-plating 7-8 µm EN ISO 12329

RECOMMENDED LOADS



| TYPE | F |
|-------|-----|
| PON S | 300 |

Recommended load is the average resistance load with a safety coefficient.
1 daN=1 kg.

PACKAGING

In cardboard box

RELATED ITEMS

- > PF3 strut channels
- > JBR 10 - Quick connection bolt

DATE 07-2023 REV. 01

The current technical data sheet substitutes and cancels the previous ones. The details provided fit our current knowledge of the product. It cannot lead us to any sort of responsibility or compensation.

Gia S.p.A. reserves the right of changing technical features and molds without notice.

This company is subject to "Ethica Global Investments S.p.A." management.

Gia S.p.A. – Via Sac. A. Cremona, 12 – 28069 Trecate (NO) – www.gia.it