



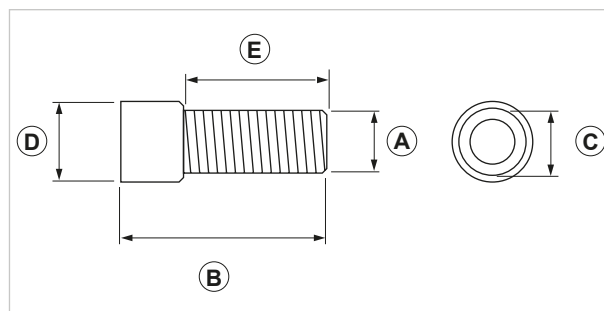
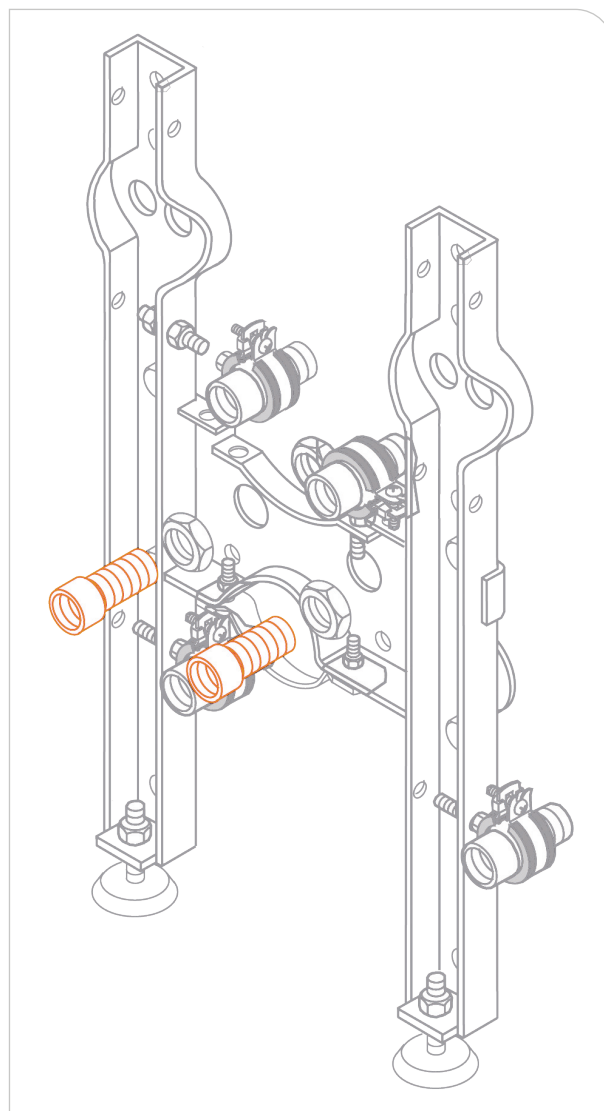
## 1/2" Brass extension kit

### APPLICATION

Used to adjust the position of water adduction pipe lines during wall hung bidet installation.

### FEATURES AND BENEFITS

- > It is necessary to **correctly adjust the position of water adduction pipe lines** while installing wall hung bidet.
- > It allows to adjust the joints **flush with the wall**.
- > 1/2" male/female BSP cylindrical sleeve for standard fittings.
- > Made of CW 614N - DM 174 brass, **compliant with sanitary water regulations**.



COD	TYPE	A	B	C	D	E
020506	PO	1/2"	70	1/2"	25	48

**MATERIALS TECHNICAL DATA****SLEEVE**

Brass CW 614N EN 12164

**PACKAGING**

In polyethylene

**DATE 04-2020 REV. 00**

The current technical data sheet substitutes and cancels the previous ones. Information correspond with our current knowledge of the product. It cannot lead us to any sort of responsibility or compensation.

Gia S.p.A. reserves the right of changing technical features and molds without notice.

**Gia S.p.A. – Via Sac. A. Cremona, 12 – 28069 Trecate (NO) – [www.gia.it](http://www.gia.it)**

T 02.12.50 REV 0

