

PAP S

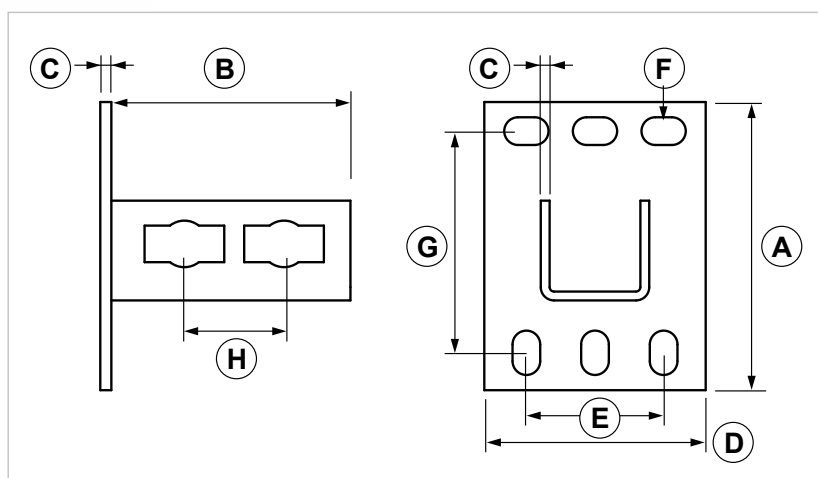
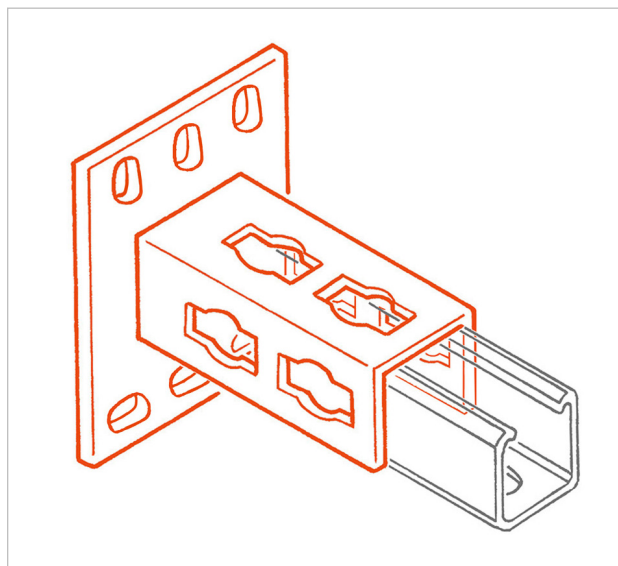
Six-hole channel base fitting

APPLICATION

Used for installations on wall, ceiling or floor.

FEATURES AND BENEFITS

- > Support brackets for **PF3 and PF4 strut channels**.
- > The exclusive shape of the loops makes "JBR 10" bolt (cod. 161950) **connection fast and easy**.
- > The loops are set on each side of the rail so that the strut channel can be installed with a 90° rotation as well.
- > **Solid fixing** thanks to its 6 fixing holes.



COD	TYPE	A	B	C	D	E	F	G	H
161208	PAP S	130	108	5	100	62	13x20	100	47

INDUSTRIAL FIXING SYSTEMS

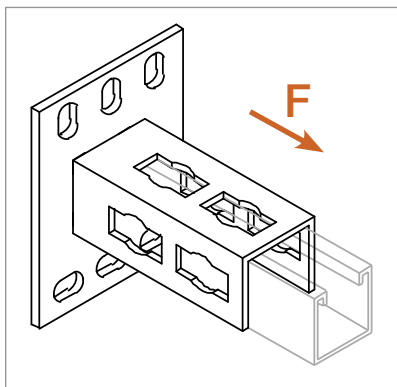
SUPPORT BRACKETS

MATERIALS TECHNICAL DATA

PAP S

Steel DD11 EN 10111 with electro zinc plating 7-8 μm EN ISO 12329

RECOMMENDED LOADS



TYPE	F
PAP S	500

F = concentrated load in daN.

PACKAGING

In cardboard box

RELATED ITEMS

- > PF3 and PF4 Strut channels
- > JBR 10 bolt

DATE 02-2023 REV. 01

The current technical data sheet substitutes and cancels the previous ones. The details provided fit our current knowledge of the product. It cannot lead us to any sort of responsibility or compensation.

Gia S.p.A. reserves the right of changing technical features and molds without notice.

This company is subject to "Ethica Global Investments S.p.A." management.

Gia S.p.A. – Via Sac. A. Cremona, 12 – 28069 Trecate (NO) – www.gia.it