

PAP

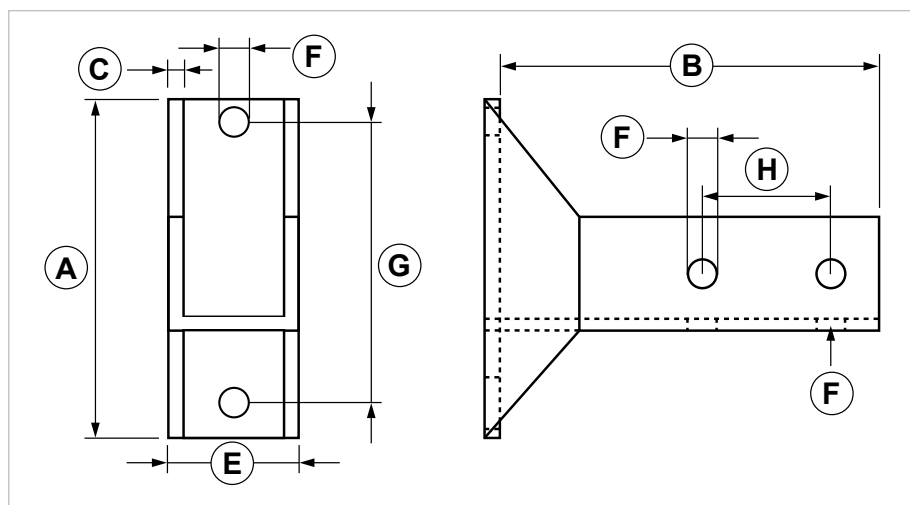
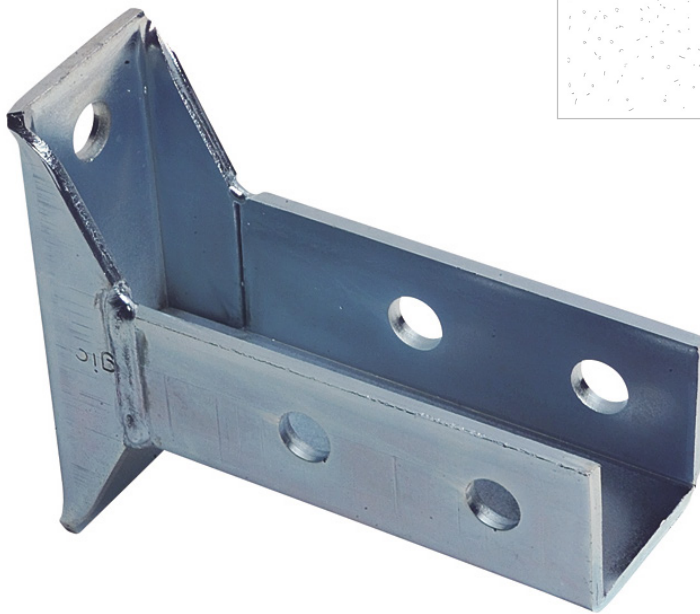
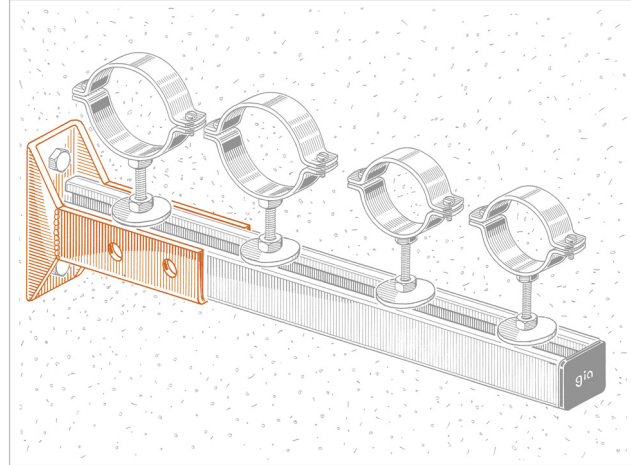
Support bracket for heavy duty strut channels

APPLICATION

It is used for wall, ceiling or floor installations.

FEATURES AND BENEFITS

- > Support bracket for PF3 and PF4 strut channels.
- > The loops are set on each side of the rail so that the strut channel can be installed with a 90° rotation as well.



COD	TYPE	A	B	C	E	F	G	H
161205	PAP	130	150	5	53	14	90	50

INDUSTRIAL FIXING SYSTEMS

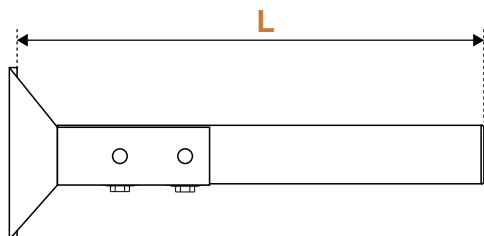
SUPPORT BRACKETS

MATERIALS TECHNICAL DATA

PAP

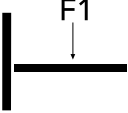

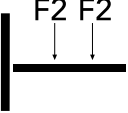
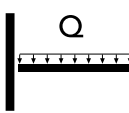
Steel DD11 EN 10111 with electro zinc plating 7-8 µm

RECOMMENDED LOADS



A PAPS, and N° 2 JBR10 with a tightening torque of 40 Nm have been used for PF3 strut channels.

PAP, DRP12, BU12 with a tightening torque of 70 Nm have been used for PF4 stru channels.

TYPE	LENGTH mm L	 F1 = daN	 F1 = daN	 F2 = daN	 Q = daN
PF4	200	110	45	45	110
	350	60	30	30	60
	450	50	25	25	50
PF3	300	300	160	160	300
	400	230	115	115	230
	600	150	75	75	150
	800	100	50	50	100

F = concentrated load in daN. - Q = evenly distributed load in daN.

Admissible tension 140 N/mm². - Admissible deflection L/125.

Recommended load is the average resistance loads with a safety coefficient. 1daN=1 kg.

For wall fastening please consider the supporting performance of the plug or the connection piece.

PACKAGING

In cardboard box

RELATED ITEMS

> PF3 and PF4 Strut channels

DATE 06-2023 REV. 01

The current technical data sheet substitutes and cancels the previous ones. The details provided fit our current knowledge of the product. It cannot lead us to any sort of responsibility or compensation.

Gia S.p.A. reserves the right of changing technical features and molds without notice.

This company is subject to "Ethica Global Investments S.p.A." management.

Gia S.p.A. – Via Sac. A. Cremona, 12 – 28069 Trecate (NO) – www.gia.it

