



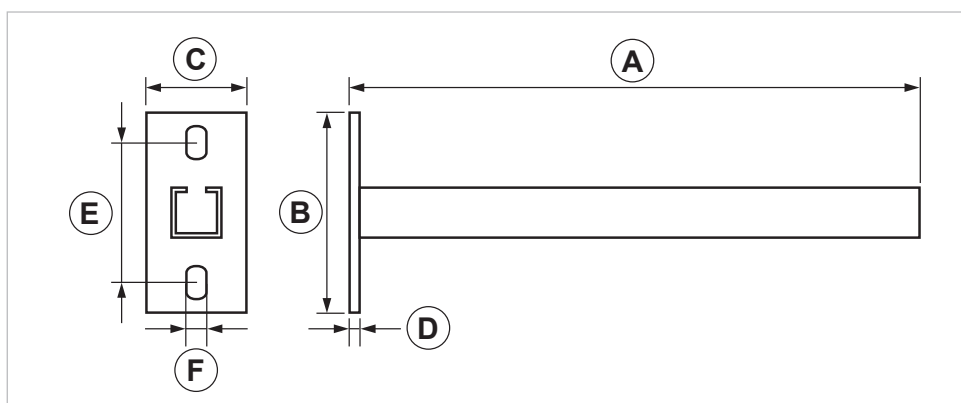
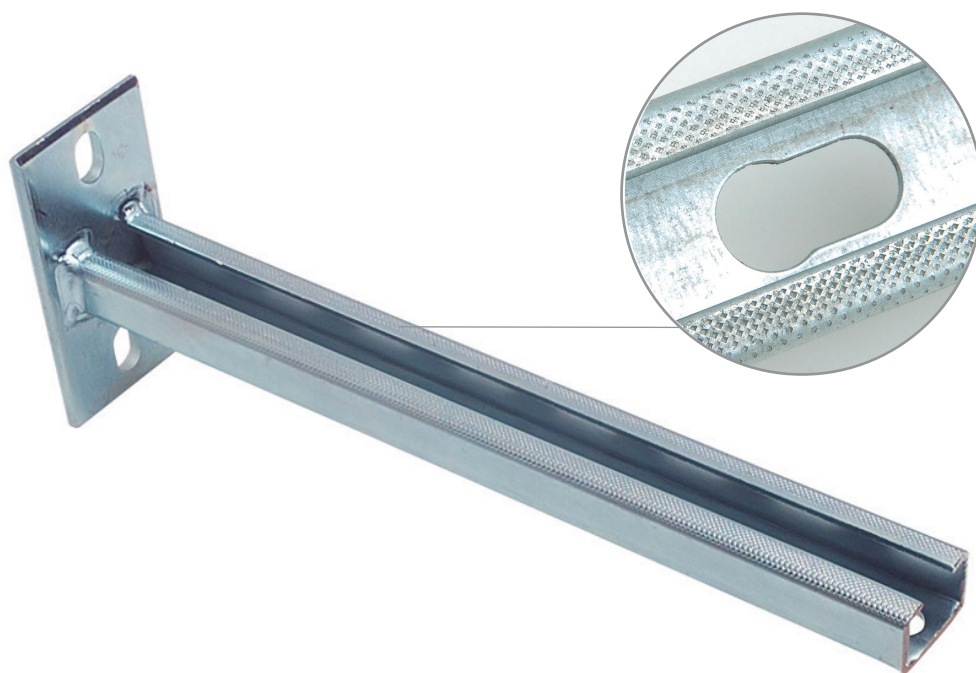
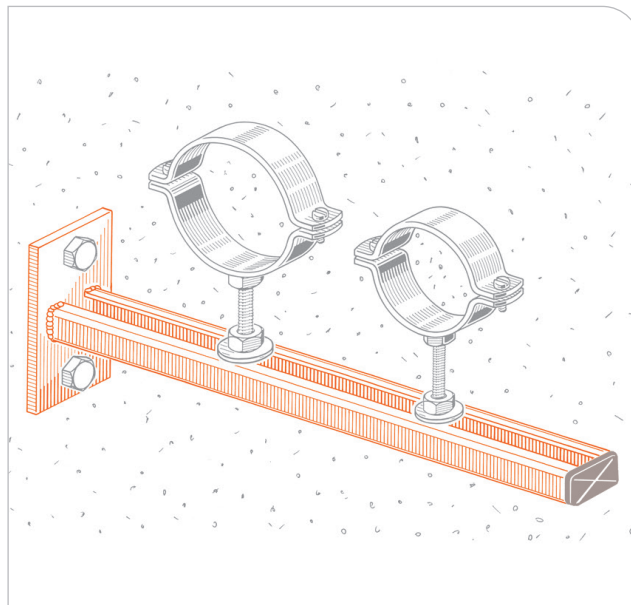
## PA30 GRIP cantilever arm bracket

### APPLICATION

Pipe lines fastening on wall, ceiling or floor.

### FEATURES AND BENEFITS

- > The **patented knurling** applied to the rail sides - both inside and outside - prevents connection parts from sliding.
- > It is made of **PF1 grip strut channel**.

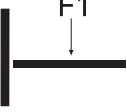

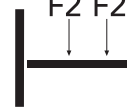
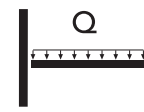


COD	TYPE	Finishing	Strut channel	A	B	C	D	E	F
161220	PA 30 GRIP	Galvanized	PF1 grip	285	100	50	5	70	10x16,5


**MATERIAL TECHNICAL DATA**
**MATERIAL**

Acciaio DX51 DZ200 EN 10142 zincatura sendzimir

**RECOMMENDED LOADS**

TYPE				
	<b>F1</b> = daN	<b>F1</b> = daN	<b>F2</b> = daN	<b>Q</b> = daN
PA 30 grip	75	37	40	75

**F** = concentrated load in daN. - **Q** = uniform load in daN.

Admissible tension 140 N/mm<sup>2</sup>. - Admissible deflection L/125.

For wall fastening please consider the plug's or the connection's supporting performance.

**PACKAGING**

In cardboard box

**RELATED ITEMS**

- > Threaded rod
- > Pipe clamps

**DATE 09-2021 REV. 00**

The current technical data sheet substitutes and cancels the previous ones. Information correspond with our current knowledge of the product. It cannot lead us to any sort of responsibility or compensation.

Gia S.p.A. reserves the right of changing technical features and molds without notice.

Gia S.p.A. – Via Sac. A. Cremona, 12 – 28069 Trecate (NO) – [www.gia.it](http://www.gia.it)