

PA2

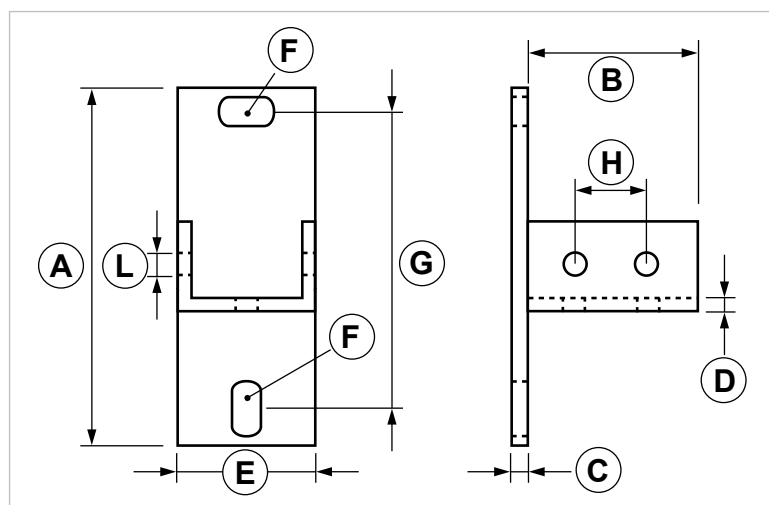
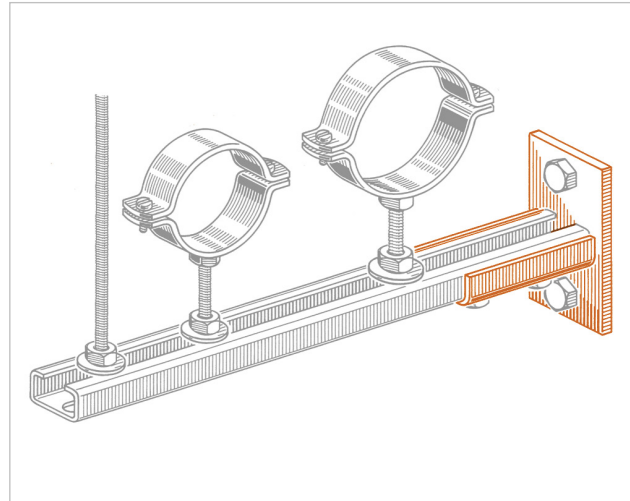
Saddle flange for medium duty strut channels

APPLICATION

For installations on wall, ceiling or floor.

FEATURES AND BENEFITS

- > Supporting bracket **for PF2 strut channels**, which is used with 30 Nm tightening torque.
- > Thanks to the side holes it is possible to connect the item with a strut channel's 90° rotation.



| COD | TYPE | A | B | C | D | E | F | G | H | L |
|--------|------|-----|-----|---|---|----|---------|----|----|------|
| 161202 | PA2 | 130 | 100 | 6 | 5 | 50 | 10,5x20 | 72 | 50 | 10,5 |

GRIP LIGHT DUTY FIXING SYSTEM

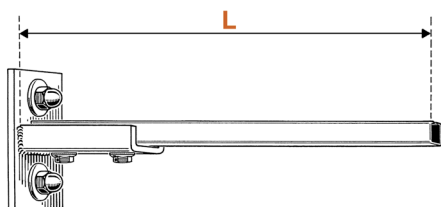
SUPPORTING BRACKETS

MATERIALS TECHNICAL DATA

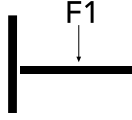
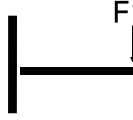
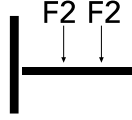
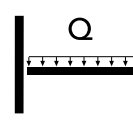
BRACKET

Steel DD11 EN 10111 with electro zinc plating 7-8 µm

RECOMMENDED LOADS



Material: DX 51 D and DD11 - **Safety load:** 140 N/mm² (14 Kg/mm²)
F = Concentrated load in daN - **Q** = Evenly distributed load in daN
 Maximum deflection L/250.
 Recommended load is the average resistance loads with a safety coefficient.
 1daN = 1kg
 For wall fastening please consider the supporting performance of the plug or the connection piece.

| TYPE | LENGTH mm L |  F1 = daN |  F1 = daN |  F2 = daN |  Q = daN |
|------|-------------------|---|---|--|--|
| PF | 200 | 42 | 20 | 20 | 42 |
| | 300 | 28 | 13 | 13 | 28 |
| PF1 | 200 | 100 | 40 | 50 | 100 |
| | 350 | 55 | 27 | 30 | 55 |
| | 450 | 48 | 23 | 24 | 48 |
| PF7 | 200 | 130 | 65 | 75 | 130 |
| | 350 | 85 | 40 | 40 | 85 |
| | 450 | 65 | 30 | 30 | 65 |
| PF2 | 300 | 140 | 60 | 70 | 140 |
| | 600 | 70 | 35 | 35 | 70 |
| | 800 | 55 | 25 | 25 | 55 |

PACKAGING

In cardboard box

RELATED ITEMS

- > Pipe clamps
- > BF - Threaded rod

DATE 06-2023 REV. 01

The current technical data sheet substitutes and cancels the previous ones. The details provided fit our current knowledge of the product. It cannot lead us to any sort of responsibility or compensation.

Gia S.p.A. reserves the right of changing technical features and molds without notice.

This company is subject to "Ethica Global Investments S.p.A." management.

Gia S.p.A. – Via Sac. A. Cremona, 12 – 28069 Trecate (NO) – www.gia.it