



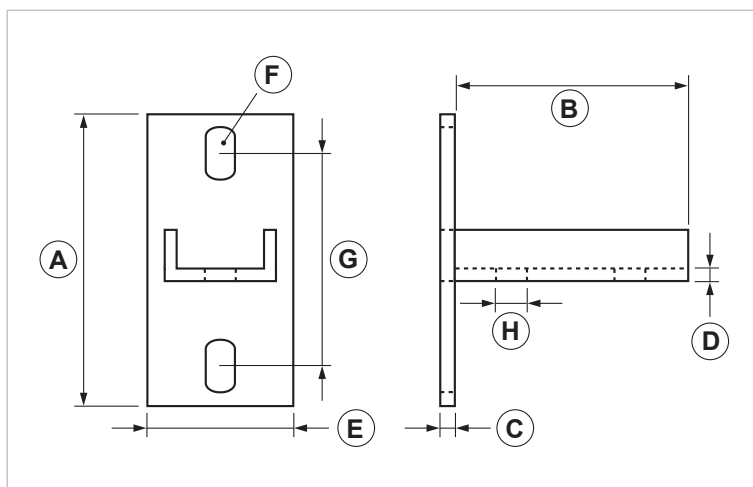
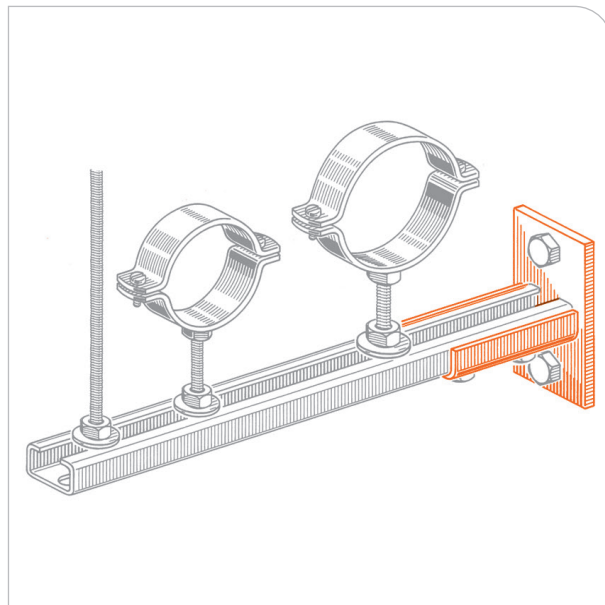
PA Saddle flange

APPLICATIONS

For installations on wall, ceiling or floor.

FEATURES AND BENEFITS

- > Supporting brackets for **PF/PF1/PF7 strut channels**.
- > This support is used with bolt tightening torque of 20 Nm for PF strut channel, and of 30 Nm for PF1 and PF7 strut channels.



COD	TYPE	A	B	C	D	E	F	G	H
161200	PA	100	80	5	4	50	10X16,5	70	10,5

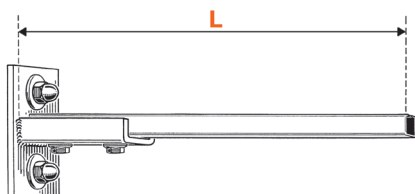


MATERIALS TECHNICAL DATA

MATERIAL

Steel DD11 EN 10111 with electro zinc plating 7-8 µm

RECOMMENDED LOADS



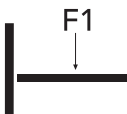

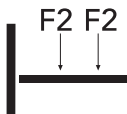
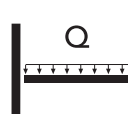
Material: DX 51 D and DD11 - **Safety load:** 140 N/mm² (14 Kg./mm²)

F = Concentrated load in daN - **Q** = Evenly distributed load in daN

The arrow doesn't exceed L/250.

Recommended load is the average resistance loads with a safety coefficient. 1 daN = 1kg

For wall fastening please consider the plug's or the connection's supporting performance.

TYPE	LENGTH mm L	 F1 = daN	 F1 = daN	 F2 = daN	 Q = daN
PF	200	42	20	20	42
	300	28	13	13	28
PF1	200	100	40	50	100
	350	55	27	30	55
	450	48	23	24	48
PF7	200	130	65	75	130
	350	85	40	40	85
	450	65	30	30	65
PF2	300	140	60	70	140
	600	70	35	35	70
	800	55	25	25	55

PACKAGING

In cardboard box

RELATED ITEMS

- > Threaded rods
- > Pipe clamps

DATE 09-2021 REV. 00

The current technical data sheet substitutes and cancels the previous ones. Information correspond with our current knowledge of the product. It cannot lead us to any sort of responsibility or compensation.

Gia S.p.A. reserves the right of changing technical features and molds without notice.

Gia S.p.A. – Via Sac. A. Cremona, 12 – 28069 Trecate (NO) – www.gia.it

