

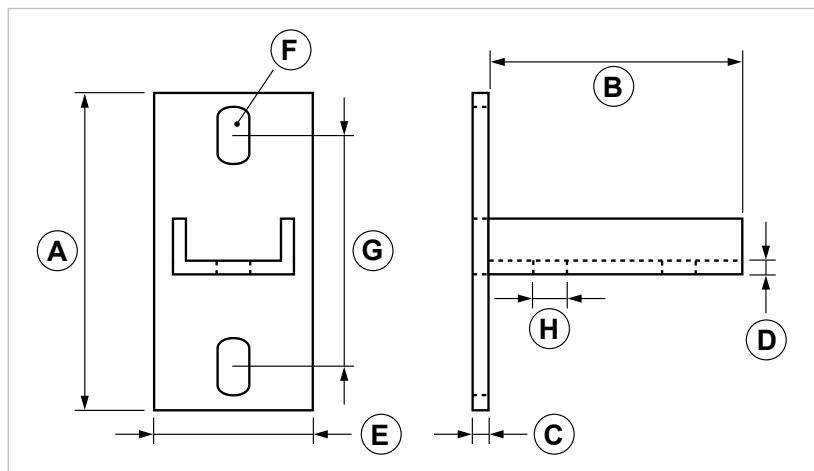
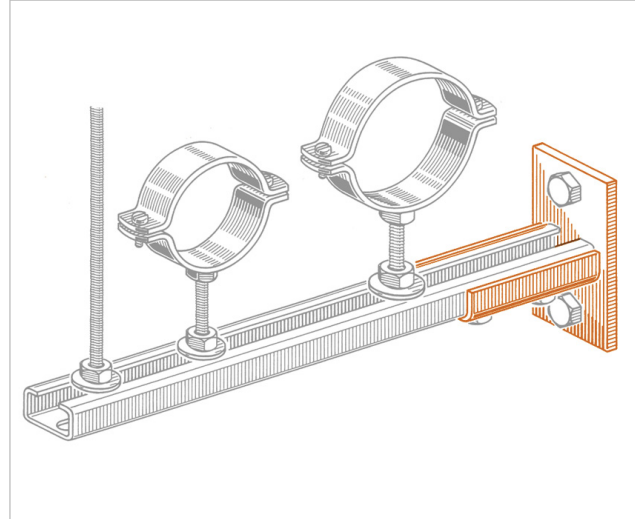
PA Saddle flange for Grip strut channels

APPLICATION

For installations on wall, ceiling or floor.

FEATURES AND BENEFITS

- > Supporting brackets for PF/PF1/PF7 strut channels.
- > This support is used with bolt tightening torque of 20 Nm for PF strut channel, and of 30 Nm for PF1 and PF7 strut channels.



COD	TYPE	A	B	C	D	E	F	G	H
161200	PA	100	80	5	4	50	10X16,5	70	10,5

GRIP LIGHT DUTY FIXING SYSTEM

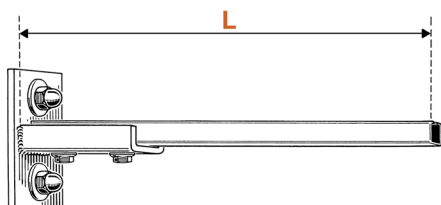
SUPPORTING BRACKETS

MATERIALS TECHNICAL DATA

BRACKET

Steel DD11 EN 10111 with electro zinc plating 7-8 μm

RECOMMENDED LOADS



Material: DX 51 D and DD11 - **Safety load:** 140 N/mm² (14 Kg/mm²)
F = Concentrated load in daN - **Q** = Evenly distributed load in daN
 Maximum deflection L/250.
 Recommended load is the average resistance loads with a safety coefficient.
 1daN = 1kg
 For wall fastening please consider the supporting performance of the plug or the connection piece.

TYPE	LENGTH mm L	 F1 = daN	 F1 = daN	 F2 = daN	 Q = daN
PF	200	42	20	20	42
	300	28	13	13	28
PF1	200	100	40	50	100
	350	55	27	30	55
	450	48	23	24	48
PF7	200	130	65	75	130
	350	85	40	40	85
	450	65	30	30	65
PF2	300	140	60	70	140
	600	70	35	35	70
	800	55	25	25	55

PACKAGING

In cardboard box

RELATED ITEMS

- > Pipe clamps
- > BF - Threaded rod

DATE 06-2023 REV. 01

The current technical data sheet substitutes and cancels the previous ones. The details provided fit our current knowledge of the product. It cannot lead us to any sort of responsibility or compensation.

Gia S.p.A. reserves the right of changing technical features and molds without notice.

This company is subject to "Ethica Global Investments S.p.A." management.

Gia S.p.A. – Via Sac. A. Cremona, 12 – 28069 Trecate (NO) – www.gia.it