

## PA 40 GRIP

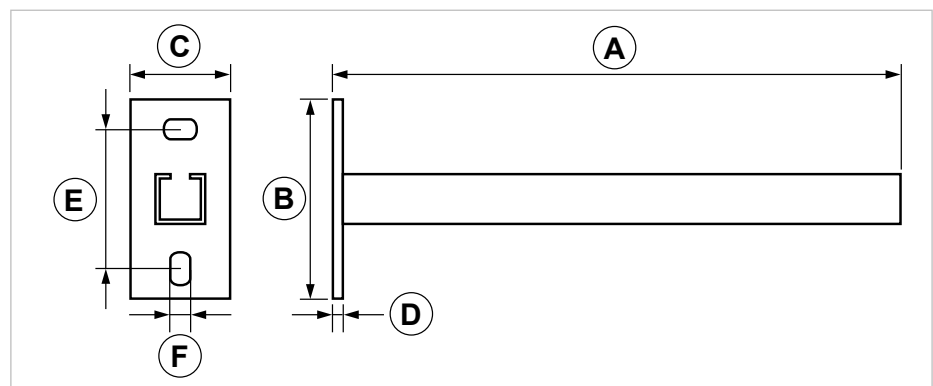
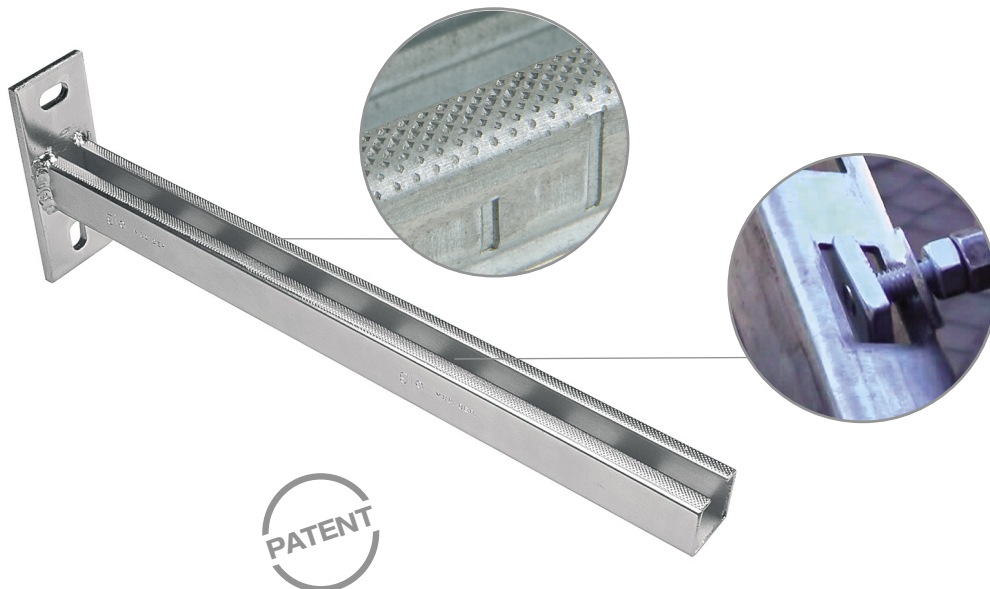
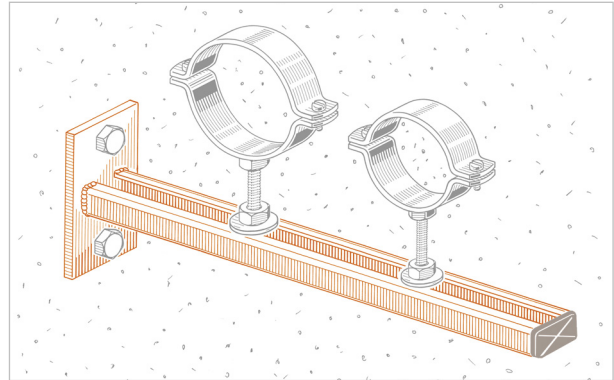
### Grip cantilever arm bracket

#### APPLICATIONS

Pipe lines fastening on wall, ceiling or floor.

#### FEATURES AND BENEFITS

- > The **patented knurling** applied to the rail sides - both inside and outside - prevents connection parts from sliding.
- > Thanks to the **rectangular loops** it is possible to insert connection items even during installation.
- > It is made of **PF2 grip strut channel**.



COD	TYPE	Finishing	Strut channel	A	B	C	D	E	F
161225	PA 40 GRIP	Galvanized	PF2 Grip	400	130	50	6	95	10,5 x 20

# GRIP LIGHT DUTY FIXING SYSTEM

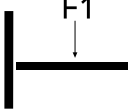
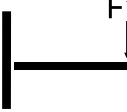
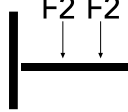
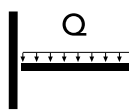
## SUPPORTING BRACKETS

### MATERIALS TECHNICAL DATA

#### BRACKET

Steel DD11 EN 10111 with electro zinc plating 7-8  $\mu\text{m}$

#### RECOMMENDED LOADS

TYPE	 <b>F1</b> = daN	 <b>F1</b> = daN	 <b>F2</b> = daN	 <b>Q</b> = daN
PA 40 grip	110	50	55	110

**F** = concentrated load in daN. - **Q** = uniform load in daN.

Admissible tension 140 N/mm<sup>2</sup>. - Admissible deflection L/125.

For wall fastening please consider the supporting performance of the plug or the connection piece.

#### PACKAGING

In cardboard box

#### RELATED ITEMS

- > Pipe clamps
- > BF - Threaded rod

#### DATE 06-2023 REV. 01

The current technical data sheet substitutes and cancels the previous ones. The details provided fit our current knowledge of the product. It cannot lead us to any sort of responsibility or compensation.

Gia S.p.A. reserves the right of changing technical features and molds without notice.

This company is subject to "Ethica Global Investments S.p.A." management.

Gia S.p.A. – Via Sac. A. Cremona, 12 – 28069 Trecate (NO) – [www.gia.it](http://www.gia.it)