

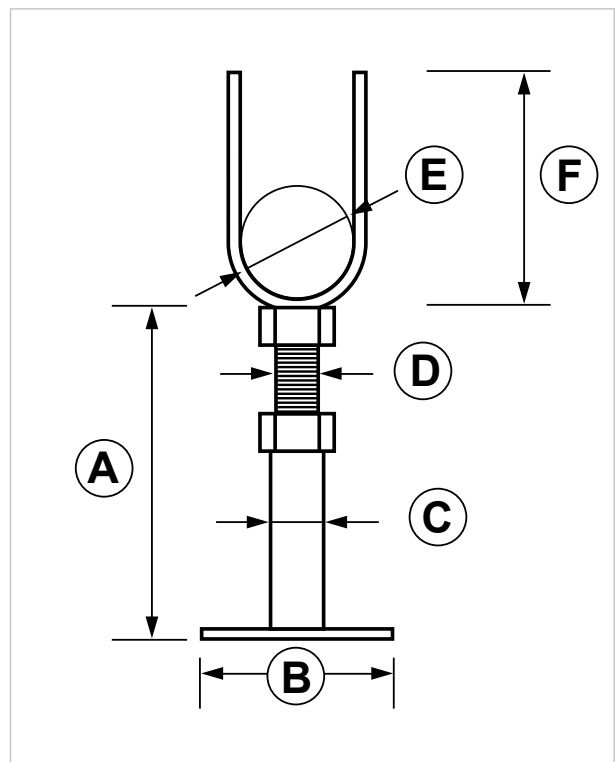
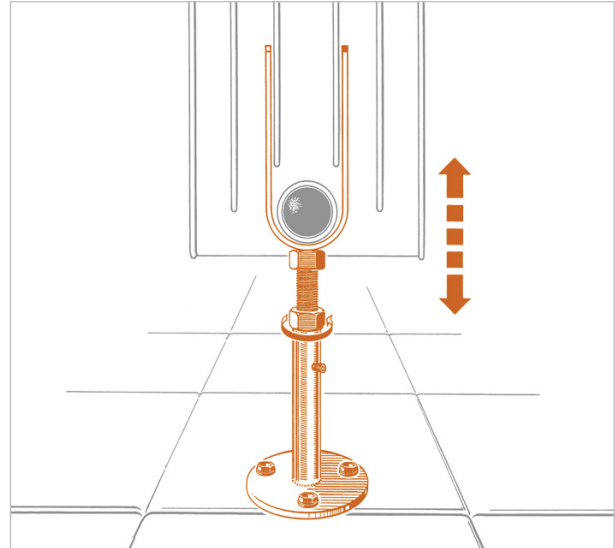
Floor support for aluminum radiators

APPLICATION

Floor support for **aluminum** radiators.

FEATURES AND BENEFITS

- > It **firmly** supports the radiator whenever it is not possible to install it on the wall or when the load on the bracket is excessive.
- > **Pinpoint height adjustment** guaranteed even when installation is about to be completed.
- > The white painted base provides a **good looking result**.



COD	TYPE	Application	Finishing	A	B	C	D	E	F
018008	MP2	aluminum radiators	white painted base	125-190	70	17	M12	41,5	120

RADIATOR FLOOR SUPPORTS AND ACCESSORIES

RADIATORS FIXINGS

MATERIALS TECHNICAL DATA

SUPPORT

Galvanized steel DD11 EN 10111 with white painted base

INSTALLATION

Drill the surface and make the right hole to insert the chosen plug. Fasten the support to the floor and set the radiator by adjusting the support at the right height.

INSTALLATION TOOLS AND RECOMMENDATIONS

Drill, proper drill bit, plug.

PACKAGING

Cardboard box - couple of floor supports

RELATED ITEMS

> Floor support covering shell:

- SCO - chrome plated version
- SCO1 - white painted version

DATE 05-2022 REV. 00

The current technical data sheet substitutes and nullifies the previous ones. Information correspond with our current knowledge of the product. It cannot lead us to any sort of responsibility or compensation.

Gia S.p.A. reserves the right of changing technical features and molds without previous notice.

Gia S.p.A. – Via Sac. A. Cremona, 12 – 28069 Trecate (NO) – www.gia.it