

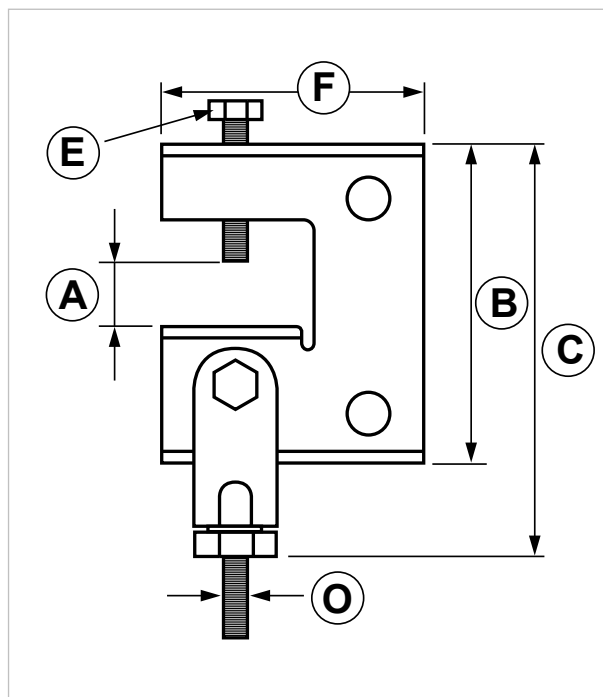
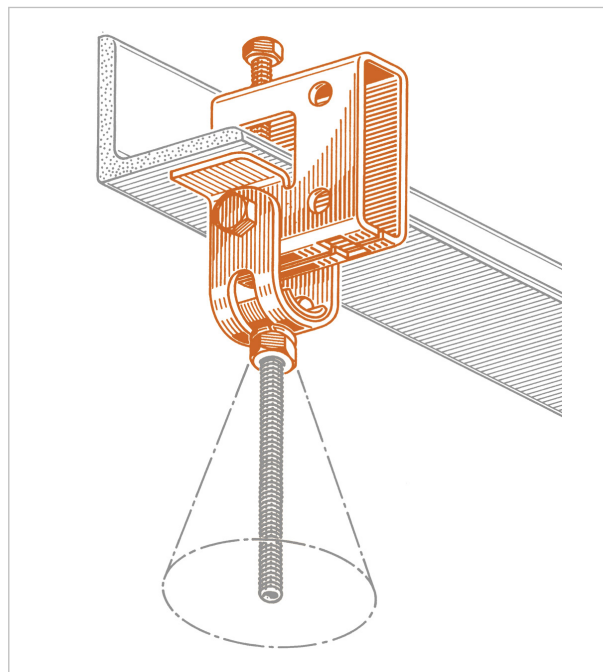
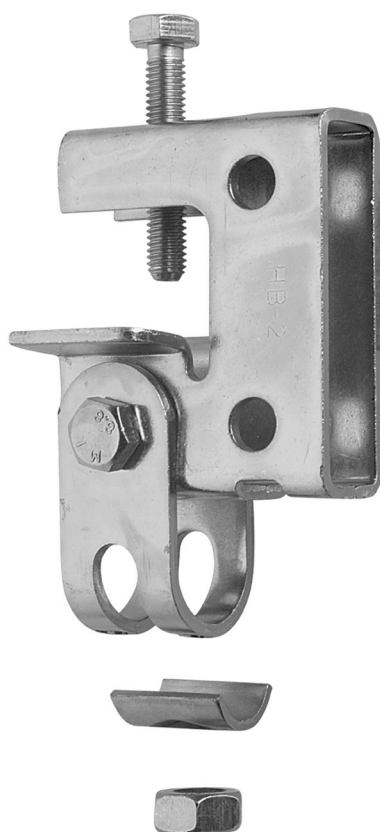
MOR2 Swivel beam clamp

APPLICATION

It is used to fasten threaded rods on metal grids.

FEATURES AND BENEFITS

- > Suitable to be **anchored to iron beams**, it is able to swing giving it the **chance to adjust the inclination** of the hanging threaded rod.
- > Suitable for hanging structures with **M10 thread**.
- > The locking screw is made of **high resistance steel**.
- > The beam clamp is provided **already assembled**.



COD	Type	A	B	C	E	F	O
165550	MOR2	25 max	73	108	M8	60	M10

INDUSTRIAL FIXING SYSTEMS

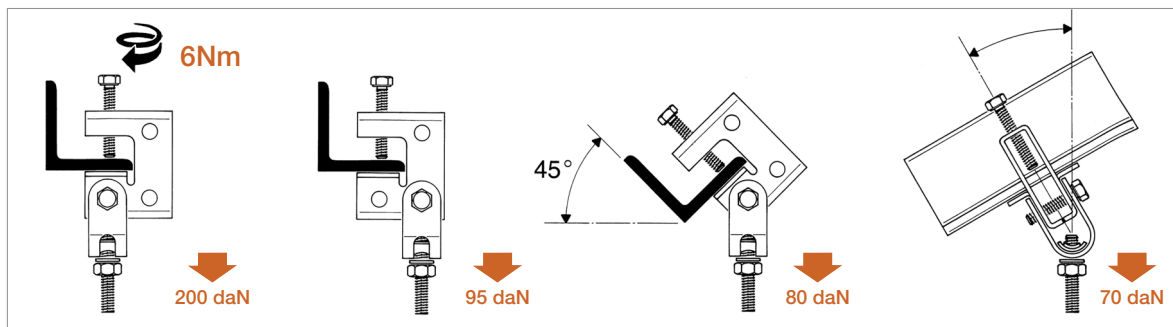
ANGLE BRACKETS AND FITTINGS FOR HEAVY DUTY STRUT CHANNELS

MATERIALS TECHNICAL DATA

BEAM CLAMP

Galvanized steel DD11 EN 10111

RECOMMENDED LOADS



Recommended load is the average resistance load with a safety coefficient.

Tightening torque = 6 Nm. 1 daN=1 kg

PACKAGING

In polyethylene bags

RELATED ITEMS

- > Threaded rods
- > Pipe clamps

DATE 07-2023 REV. 01

The current technical data sheet substitutes and cancels the previous ones. The details provided fit our current knowledge of the product. It cannot lead us to any sort of responsibility or compensation.

Gia S.p.A. reserves the right of changing technical features and molds without notice.

This company is subject to "Ethica Global Investments S.p.A." management.

Gia S.p.A. – Via Sac. A. Cremona, 12 – 28069 Trecate (NO) – www.gia.it