

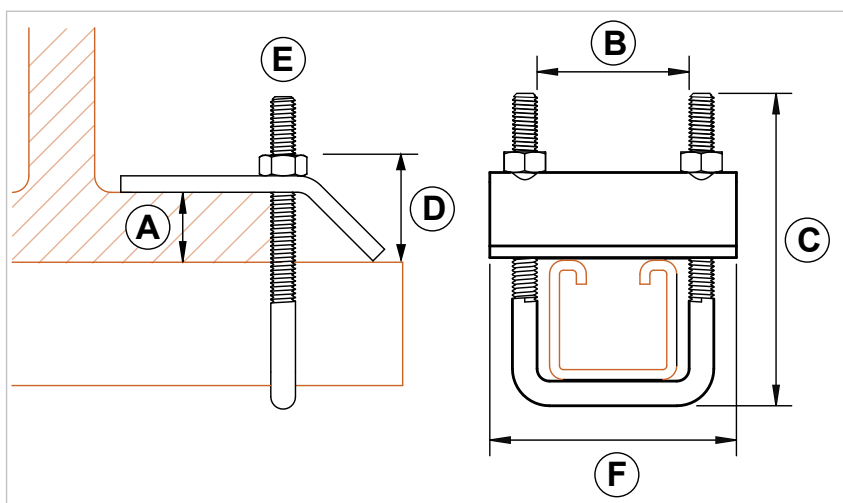
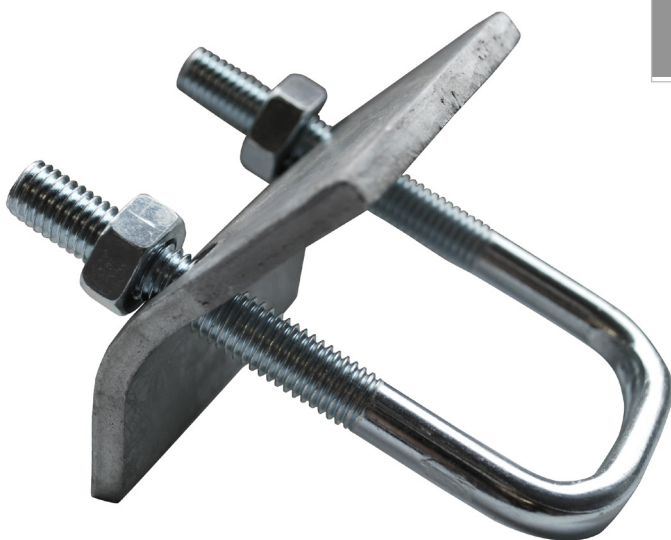
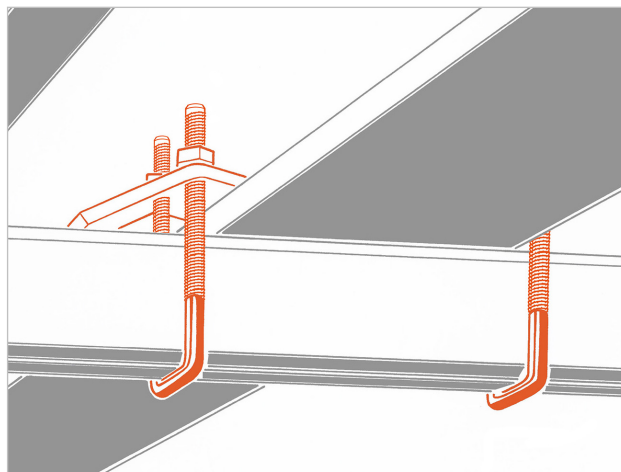
### MOR PF3 M10 u-shaped beam clamp

#### APPLICATION

Used to fasten PF3 and PF4 strut channels on steel girders. Suitable for strut channels up to 41 mm wide and up to 65 mm high.

#### FEATURES AND BENEFITS

- > Beam clamp with **square u-shaped bolt**.
- > Complete **with nuts**.
- > Beam clamp hangers have to be **installed in pair**.
- > **Suitable for PF3 and PF4** strut channels.



COD	Type	A	B	C	D	E	F
165520	MOR PF3	18 max	45	95	24	M10	80

# INDUSTRIAL FIXING SYSTEMS

## ANGLE BRACKETS AND FITTINGS FOR HEAVY DUTY STRUT CHANNELS

### MATERIALS TECHNICAL DATA

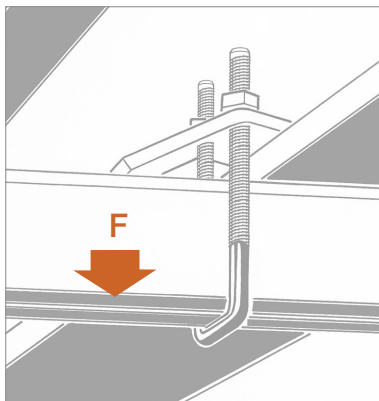
#### BEAM CLAMP

Galvanized steel

#### COMPONENTS

Steel 4.8 with electro zinc-plating 7-8 µm

### RECOMMENDED LOADS



TYPE	F
MOR PF3	500

Recommended load is the average resistance load with a safety coefficient. Loads refer to a couple of beam clamps.

1 daN=1 kg.

### PACKAGING

In cardboard box

### RELATED ITEMS

> PF3 - PF4 strut channels

### DATE 07-2023 REV. 01

The current technical data sheet substitutes and cancels the previous ones. The details provided fit our current knowledge of the product. It cannot lead us to any sort of responsibility or compensation.

Gia S.p.A. reserves the right of changing technical features and molds without notice.

This company is subject to "Ethica Global Investments S.p.A." management.

Gia S.p.A. – Via Sac. A. Cremona, 12 – 28069 Trecate (NO) – [www.gia.it](http://www.gia.it)