

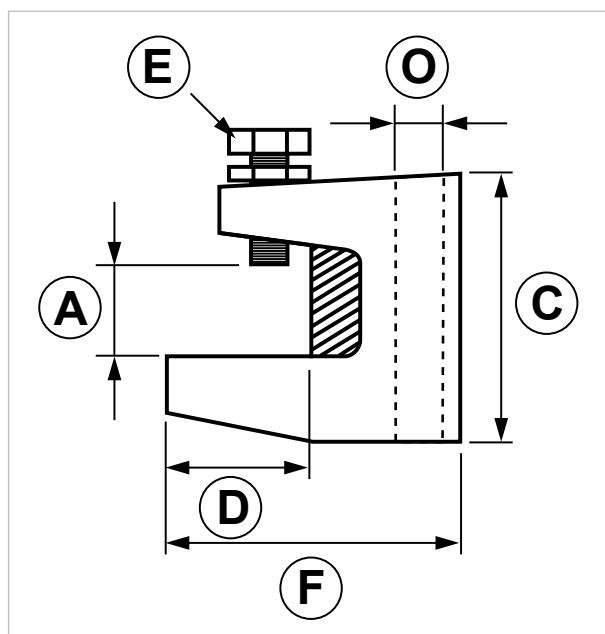
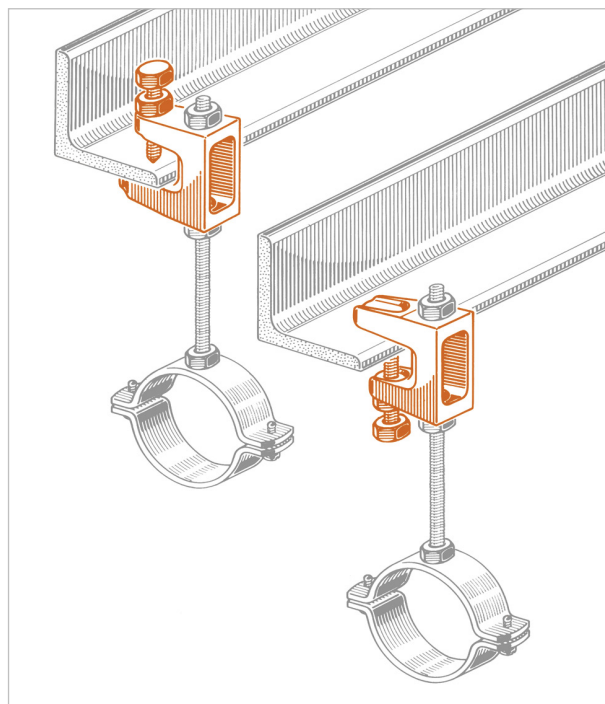
### MOR Beam clamp

#### APPLICATION

It is used to fasten threaded rods on metal girders.

#### FEATURES AND BENEFITS

- > Fixing element for **threaded rods** on **iron beams** without drilling nor welding.
- > The locking screw is made of **high resistance steel**, and it is provided with safety locknut which prevents unscrewing.
- > **Easy and handy** to adjust.
- > The beam clamp is provided **already assembled**.



COD	Type	Certification	A	C	D	E	F	O
165501	MOR 8	VDS	18 max	36	18	M8	38	M8
165502	MOR 10	VDS - FM	20 max	41	23	M10	44	M10
165503	MOR 12	VDS - FM	26 max	54	36	M10	59	M12

# INDUSTRIAL FIXING SYSTEMS

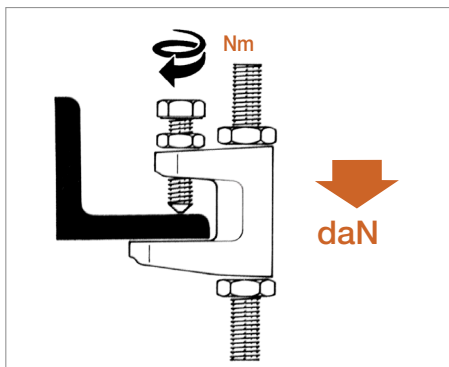
## ANGLE BRACKETS AND FITTINGS FOR HEAVY DUTY STRUT CHANNELS

### MATERIALS TECHNICAL DATA

#### BEAM CLAMP

Cast iron (ref. DIN 1684 for tolerance, galvanized)

#### RECOMMENDED LOADS



TYPE	F	Nm
MOR 8	120	7
MOR 10	250	10
MOR 12	350	14

Recommended load is the average resistance load with a safety coefficient.  
1 daN=1 kg

#### PACKAGING

In cardboard box

#### RELATED ITEMS

- > Threaded rods
- > Pipe clamps

#### DATE 07-2023 REV. 01

The current technical data sheet substitutes and cancels the previous ones. The details provided fit our current knowledge of the product. It cannot lead us to any sort of responsibility or compensation.

Gia S.p.A. reserves the right of changing technical features and molds without notice.

This company is subject to "Ethica Global Investments S.p.A." management.

Gia S.p.A. – Via Sac. A. Cremona, 12 – 28069 Trecate (NO) – [www.gia.it](http://www.gia.it)