

## JDRP

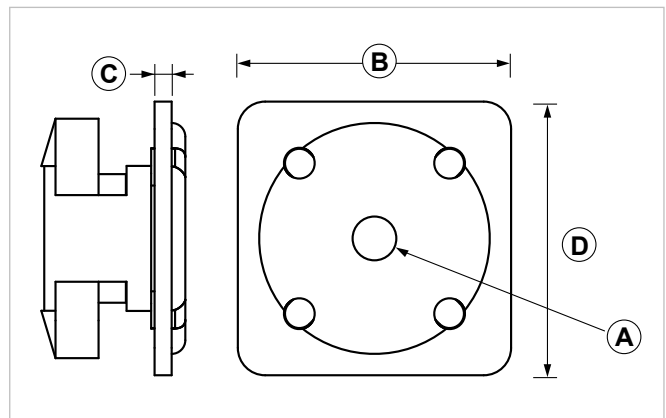
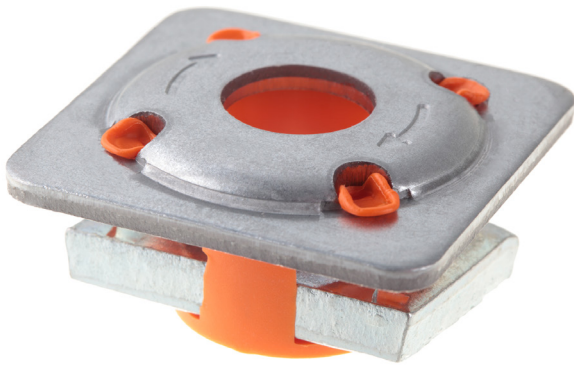
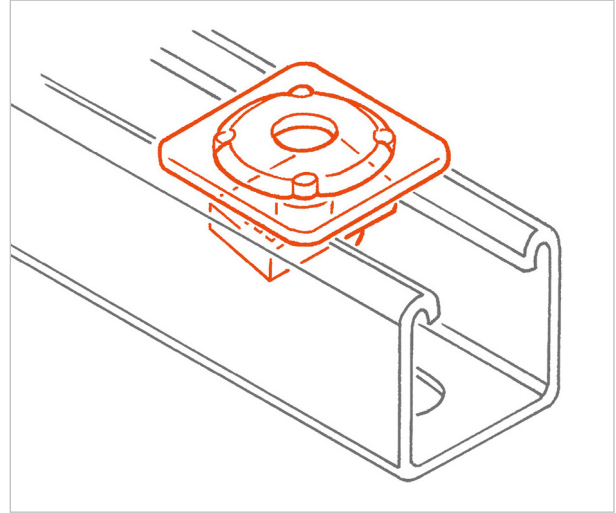
### Quick connection nut with square washer

#### APPLICATION

Used to quickly install pipe lines on PF3 and PF4 strut channels.

#### FEATURES AND BENEFITS

- > **Provided already assembled, it guarantees a very quick installation:** it takes only few seconds to fix it.
- > It can be inserted **anywhere on the strut channel** with a simple 90° rotation.
- > Thanks to its exclusive **clockwork system**, it is possible to adjust the elements at the desired position before fastening them down.



COD	TYPE	A	B	C	D
161970	JDRP 6	M6	40	2,5	40
161972	JDRP 8	M8	40	2,5	40
161975	JDRP 10	M10	40	2,5	40
161978	JDRP 12	M12	40	2,5	40

# INDUSTRIAL FIXING SYSTEMS

## CONNECTION PARTS

### MATERIALS TECHNICAL DATA

#### SQUARE NUT

Steel S460MC EN 10149 with electro zinc plating 7-8 µm EN ISO 12329

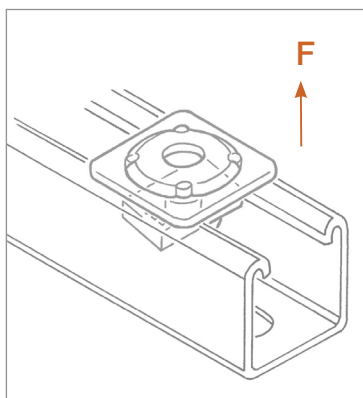
#### WASHER

Steel DX51 D-Z275 EN 10327 with electro zinc plating 7-8 µm EN ISO 12329

#### INSERT

PP Polypropylene

### RECOMMENDED LOADS



TYPE	F
JDRP 6	500
JDRP 8	500
JDRP 10	500
JDRP 12	500

Recommended load is the average resistance load with a safety coefficient.  
1 daN=1 kg.

### PACKAGING

In polyethylene bags

### RELATED ITEMS

- > PF3 and PF4 strut channels
- > Threaded rods
- > Pipe clamps

### DATE 02-2023 REV. 01

The current technical data sheet substitutes and cancels the previous ones. The details provided fit our current knowledge of the product. It cannot lead us to any sort of responsibility or compensation.

Gia S.p.A. reserves the right of changing technical features and molds without notice.

This company is subject to "Ethica Global Investments S.p.A." management.

Gia S.p.A. – Via Sac. A. Cremona, 12 – 28069 Trecate (NO) – [www.gia.it](http://www.gia.it)