

JDR GRIP

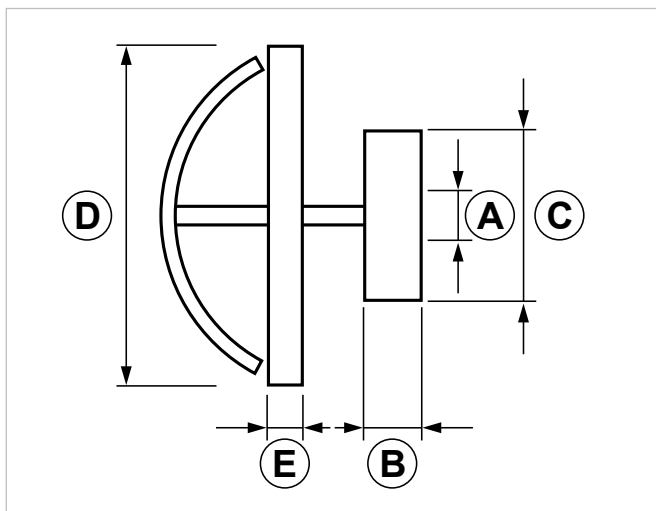
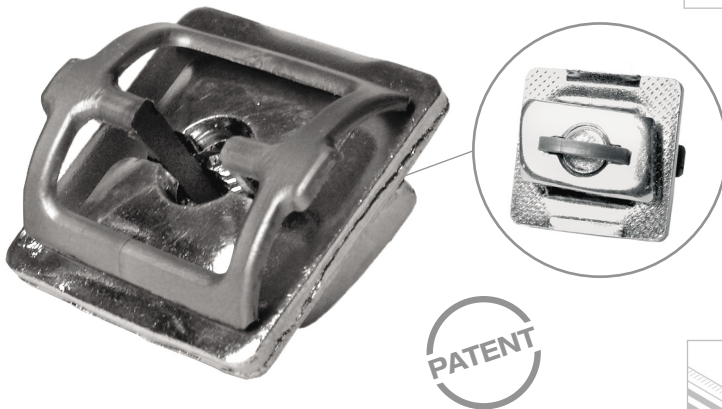
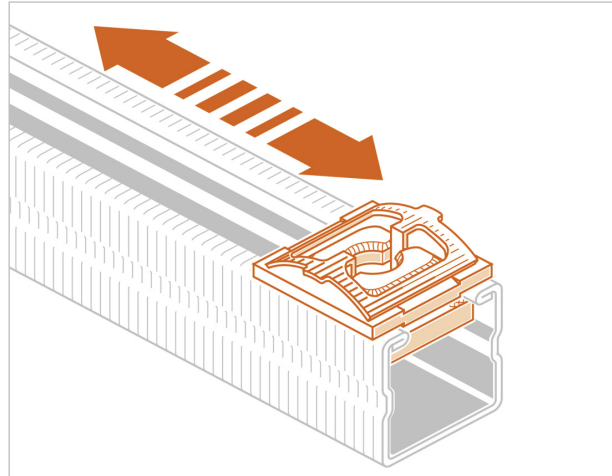
Fast coupling Grip channel nut

APPLICATION

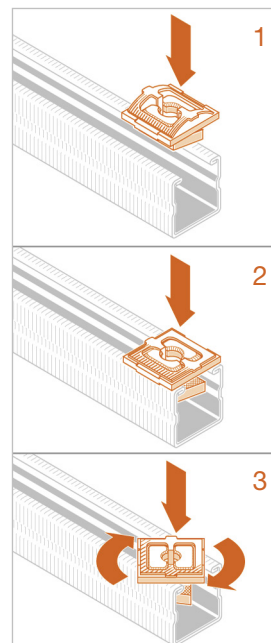
Used to connect threaded rods to **PF/PF1/PF7/PF2** strut channels.

FEATURES AND BENEFITS

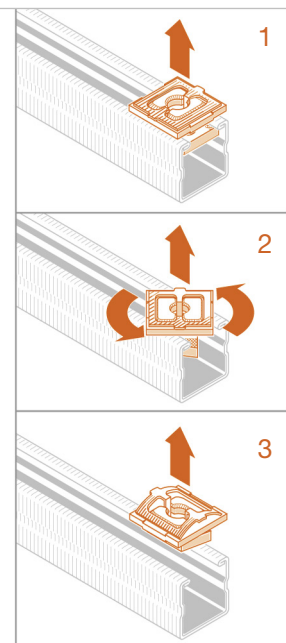
- > **Already assembled**, for a very fast installation.
- > It can be placed **anywhere on the strut channel** by making a **simple 90° rotation**.
- > The inner nut - placed on the side, next to the strut channel - is **knurled to prevent sliding**.
- > It is provided with a knurled washer and a tiny hook that locks the nut to prevent its accidental detachment.



ASSEMBLY



TAKEDOWN



COD	TYPE	A	B	C	D	E
161901	JDR 8 GRIP	M8	5	15x27	30x30	3
161902	JDR 10 GRIP	M10	5	15x27	30x30	3

GRIP LIGHT DUTY FIXING SYSTEM

CONNECTION PARTS

MATERIALS TECHNICAL DATA

NUT

Steel DD11 EN 10111

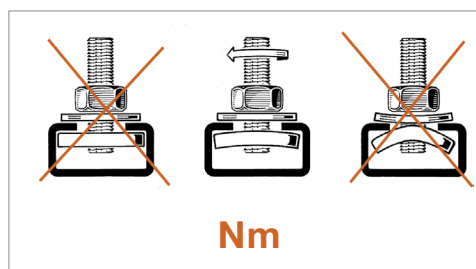
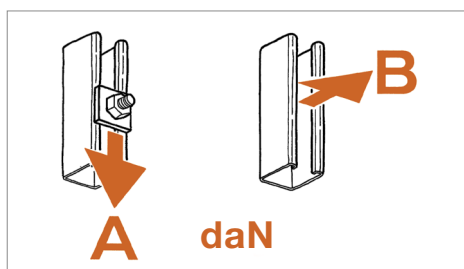
INSERT

Nylon PA 6.6

RECOMMENDED LOADS

Recommended load is the average resistance loads with a safety coefficient. 1 daN=1 kg.

A - B = recommended loads **Nm** = Tightening torque



	PF			PF1			PF7			PF2		
TYPE	A	B	Nm	A	B	Nm	A	B	Nm	A	B	Nm
JDR 8	50	150	13	55	200	13	55	200	13	55	200	13
JDR 10	50	150	13	55	200	13	55	200	13	55	200	13

PACKAGING

In cardboard box

RELATED ITEMS

- > Pipe clamps
- > BF - Threaded rod
- > Grip strut channels

DATE 06-2023 REV. 01

The current technical data sheet substitutes and cancels the previous ones. The details provided fit our current knowledge of the product. It cannot lead us to any sort of responsibility or compensation.

Gia S.p.A. reserves the right of changing technical features and molds without notice.

This company is subject to "Ethica Global Investments S.p.A." management.

Gia S.p.A. – Via Sac. A. Cremona, 12 – 28069 Trecate (NO) – www.gia.it