

## JDM GRIP

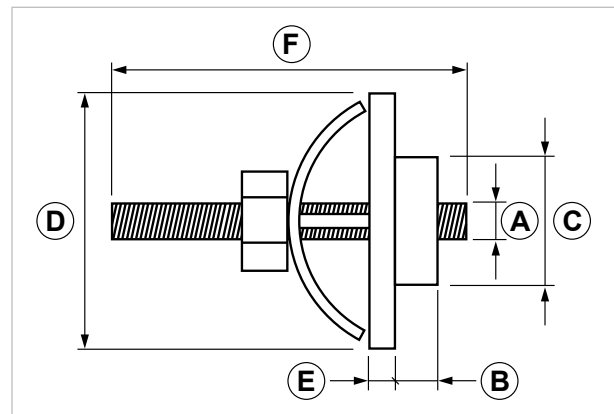
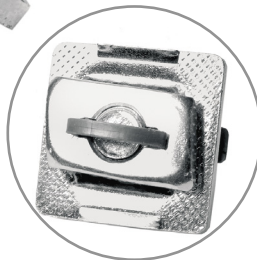
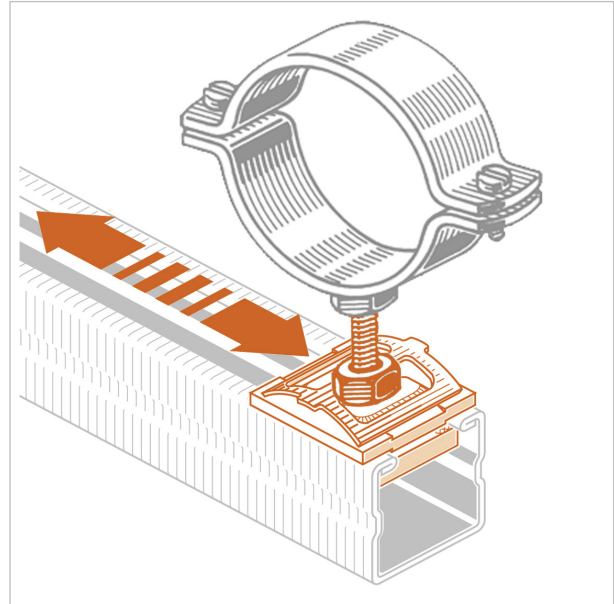
### Grip fast coupling fixing

#### APPLICATION

Used to connect pipe clamps to **PF/PF1/PF7/PF2** strut channels.

#### FEATURES AND BENEFITS

- > **Already assembled**, for a very fast installation.
- > It can be placed **anywhere on the strut channel** by making a **simple 90° rotation**.
- > The inner nut - placed on the side, next to the strut channel - is **knurled to prevent sliding**.
- > It is provided with **knurled washer, nut and threaded stud**.
- > The washer is provided with a tiny hook which locks the nut to prevent its accidental detachment.



COD	TYPE	A	B	C	D	E	F
161920	JDM 8X30 GRIP	M8	5	15x27	30x30	3	32
161922	JDM 8X70 GRIP	M8	5	15x27	30x30	3	70
161930	JDM 10X30 GRIP	M10	5	15x27	30x30	3	32
161932	JDM 10X70 GRIP	M10	5	15x27	30x30	3	70

# GRIP LIGHT DUTY FIXING SYSTEM

## CONNECTION PARTS

### MATERIALS TECHNICAL DATA

#### BOLT

Steel DD11 EN 10111

#### INSERT

Nylon PA 6.6

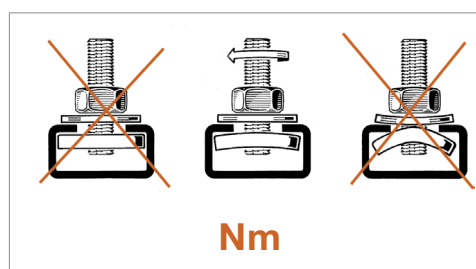
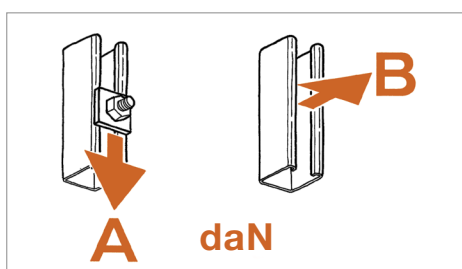
#### COMPONENTS

Steel 4.8 EN ISO 898.1 with electro zinc plating 7-8 µm

### RECOMMENDED LOADS

Recommended load is the average resistance loads with a safety coefficient. 1 daN=1 kg.

**A - B** = recommended loads    **Nm** = Tightening torque



	PF			PF1			PF7			PF2		
TYPE	A	B	Nm	A	B	Nm	A	B	Nm	A	B	Nm
JDM 8	50	150	13	55	200	13	55	200	13	55	200	13
JDM 10	50	150	13	55	200	13	55	200	13	55	200	13

### PACKAGING

In cardboard box

### RELATED ITEMS

- > Pipe clamps
- > BF - Threaded rod
- > Grip strut channels

### DATE 06-2023 REV. 01

The current technical data sheet substitutes and cancels the previous ones. The details provided fit our current knowledge of the product. It cannot lead us to any sort of responsibility or compensation.

Gia S.p.A. reserves the right of changing technical features and molds without notice.

This company is subject to "Ethica Global Investments S.p.A." management.

Gia S.p.A. – Via Sac. A. Cremona, 12 – 28069 Trecate (NO) – [www.gia.it](http://www.gia.it)