

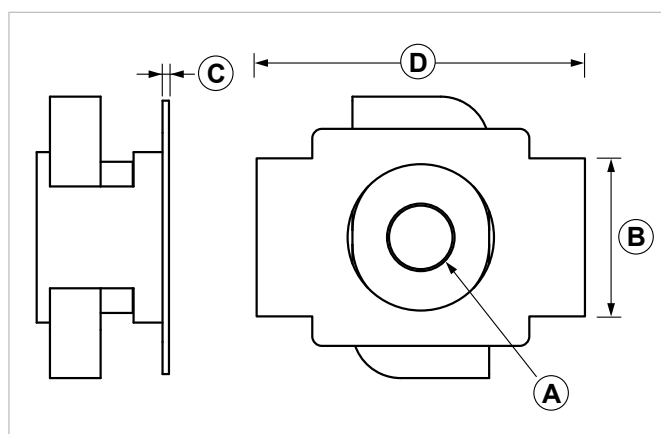
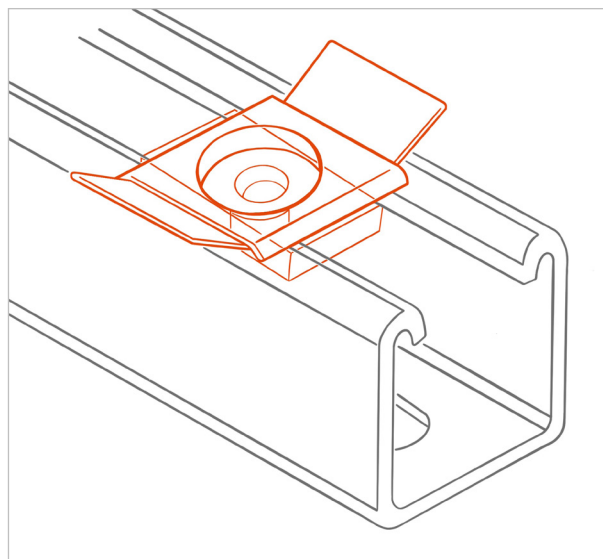
JDA Quick connection nut

APPLICATION

It is used to quickly connect G-STRUT components on PF3 and PF4 strut channels.

FEATURES AND BENEFITS

- > **Provided already assembled**, it guarantees a **very quick installation**: it takes only few seconds to fix it.
- > It can be inserted **anywhere on the strut channel** with a simple 90° rotation.
- > Thanks to its exclusive **clockwork system**, it is possible to adjust the elements at the desired position before fasten them down.



COD	TYPE	A	B	C	D
161960	JDA 6	M6	20	0,8	50
161962	JDA 8	M8	20	0,8	50
161965	JDA 10	M10	20	0,8	50
161968	JDA 12	M12	20	0,8	50

INDUSTRIAL FIXING SYSTEMS

CONNECTION PARTS

MATERIALS TECHNICAL DATA

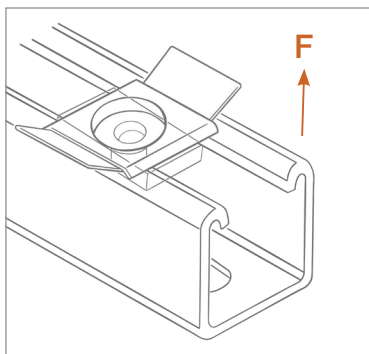
SQUARE NUT

Steel DD11 EN 10111 with electro zinc plating 7-8 µm

INSERT

PP Polypropylene

RECOMMENDED LOADS



TYPE	F
JDA 6	240
JDA 8	240
JDA 10	330
JDA 12	330

Recommended load is the average resistance load with a safety coefficient.
1 daN=1 kg.

PACKAGING

In polyethylene bags

RELATED ITEMS

- > PF3 and PF4 strut channels
- > Threaded rods
- > Pipe clamps

DATE 02-2023 REV. 01

The current technical data sheet substitutes and cancels the previous ones. The details provided fit our current knowledge of the product. It cannot lead us to any sort of responsibility or compensation.

Gia S.p.A. reserves the right of changing technical features and molds without notice.

This company is subject to "Ethica Global Investments S.p.A." management.

Gia S.p.A. – Via Sac. A. Cremona, 12 – 28069 Trecate (NO) – www.gia.it