

JBR 10

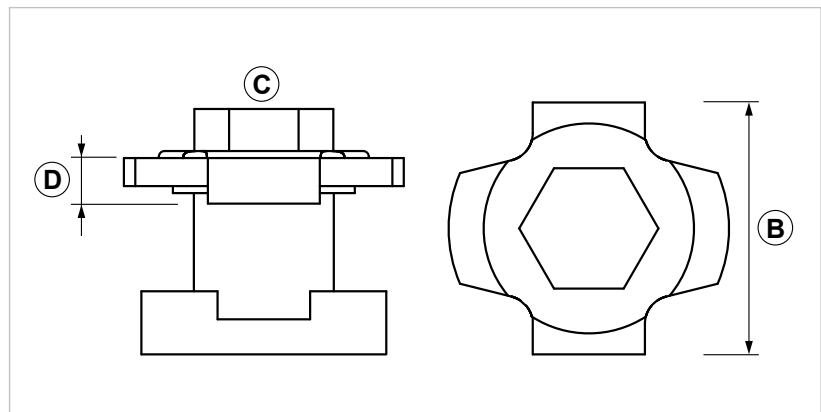
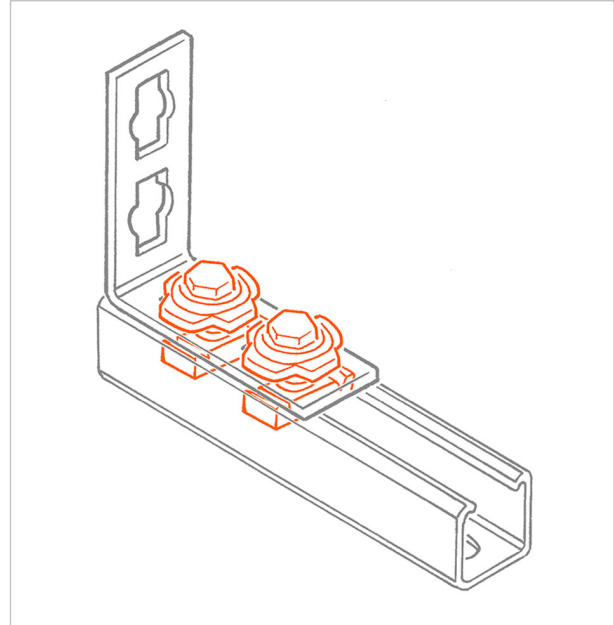
Quick connection bolt

APPLICATION

It is used to quickly connect G-STRUT components on PF3 and PF4 strut channels.

FEATURES AND BENEFITS

- > **Provided already assembled, it guarantees a very quick installation:** it takes only few seconds to fix it.
- > It can be inserted **anywhere on the strut channel** with a simple 90° rotation.
- > Thanks to its exclusive **clockwork system**, it is possible to adjust the elements at the desired position before fastening them down.



COD	TYPE	B	C	D
161950	JBR 10	40	SW17 - M10	4

INDUSTRIAL FIXING SYSTEMS

CONNECTION PARTS

MATERIALS TECHNICAL DATA

BOLT

Steel 8.8 DIN 933-8.8 with electro zinc plating 7-8 μm EN ISO 12329

WASHER

Steel DD11 EN 10111 with electro zinc plating 7-8 μm EN ISO 12329

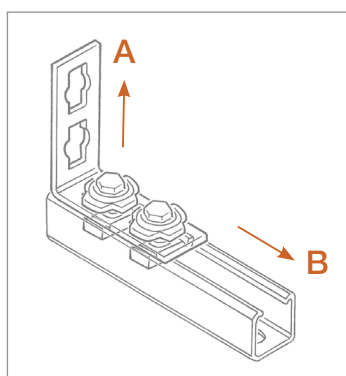
SQUARE NUT

Steel S235JR EN 10025 with electro zinc plating 7-8 μm EN ISO 12329

INSERT

PP Polypropylene

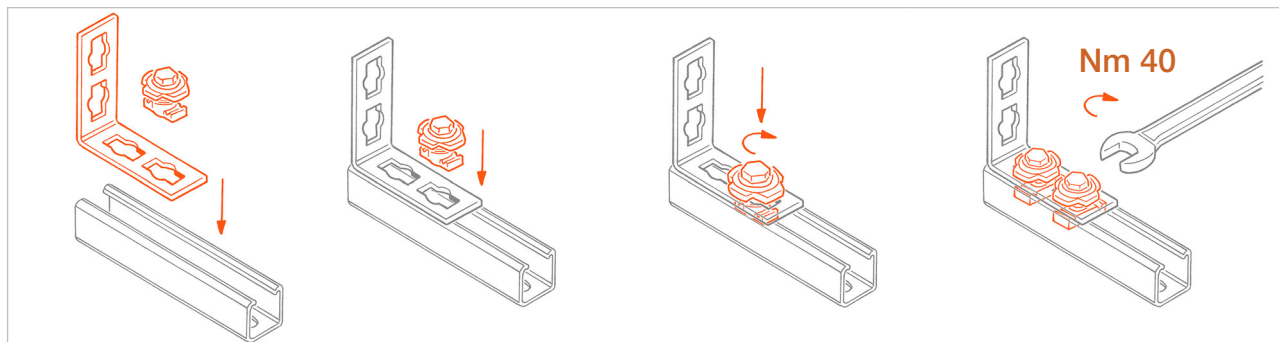
RECOMMENDED LOADS



TYPE	A	B
JBR 10	400	300

Data refer to the single item.
Recommended load is the average resistance load with a safety coefficient.
1 daN=1 kg.

RECOMMENDED LOADS



PACKAGING

In polyethylene bags

RELATED ITEMS

- > PF3 and PF4 strut channels
- > Threaded rods
- > Pipe clamps

DATE 02-2023 REV. 01

The current technical data sheet substitutes and cancels the previous ones. The details provided fit our current knowledge of the product. It cannot lead us to any sort of responsibility or compensation.

Gia S.p.A. reserves the right of changing technical features and molds without notice.

This company is subject to "Ethica Global Investments S.p.A." management.

Gia S.p.A. – Via Sac. A. Cremona, 12 – 28069 Trecate (NO) – www.gia.it