



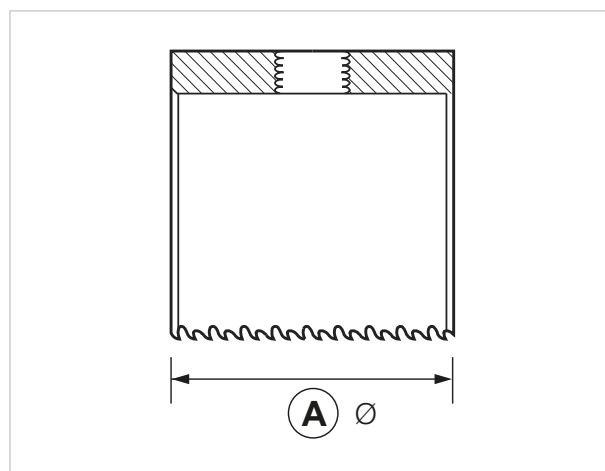
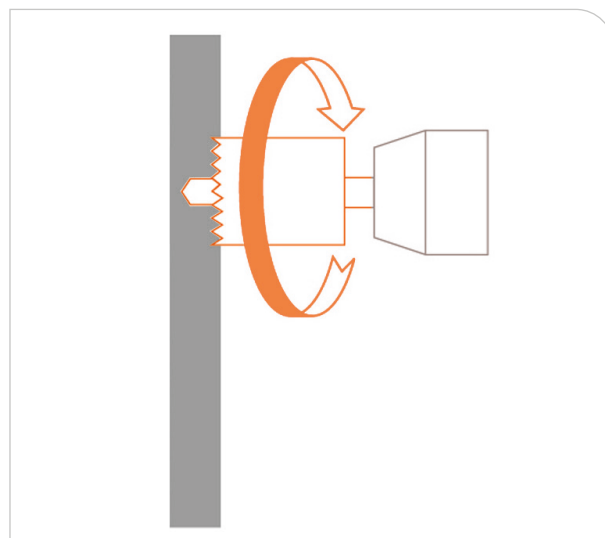
Hole saw set

APPLICATION

Used to precisely drill plasterboard walls.

FEATURES AND BENEFITS

- > It allows to precisely drill the hole on drywall panels.
- > Bimetallic hole saw HSS with variable serration.
- > Stem with saw standard connection Ø 32-210.
- > Interchangeable pilot drill.
- > The cut strain is spread to steel pivots instead of the saw thread.



COD	TYPE	Description	A
230000	GST	Stem for cylinder saw	
230010	ST 35	Cylinder saw 35mm	35

**DATA 03-2020 REV. 00**

The current technical data sheet substitutes and cancels the previous ones. Information correspond with our current knowledge of the product. It cannot lead us to any sort of responsibility or compensation.

Gia S.p.A. reserves the right of changing technical features and molds without notice.

Gia S.p.A. – Via Sac. A. Cremona, 12 – 28069 Trecate (NO) – www.gia.it

T 01.06.9C REV 0

