



## G-MAGIC - Plasterboard wall radiator bracket

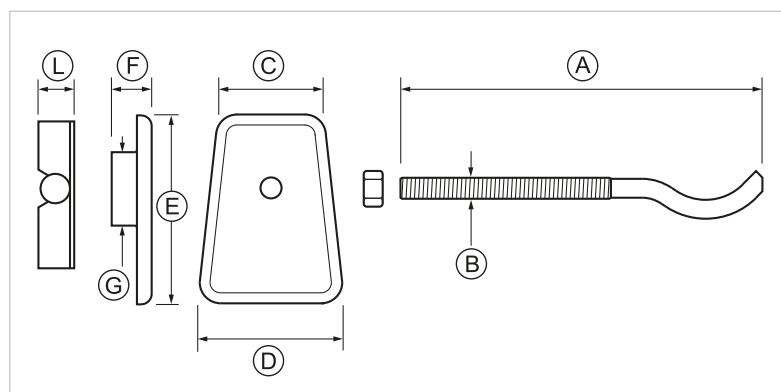
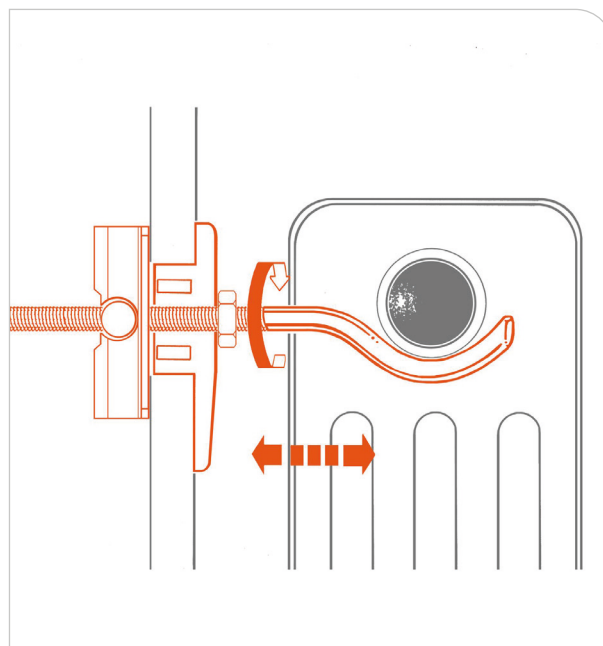


### APPLICATION

Aluminum and steel tubular radiators (up to 4 columns) fastening on plasterboard walls.

### FEATURES AND BENEFITS

- > Thanks to its exclusive **patented technology**, radiators can be installed on both **finished and unfinished** plasterboard walls.
- > **Payload's high rates** are guaranteed by the **solid plate in the back**, which can be easily inserted in the hole even when the wall is already finished.
- > **Pinpoint distance adjustment** from the wall.
- > The bevelled tip and the white nylon front cover ensure **the best aesthetic result**.



COD	TYPE	A	B	C	D	E	F	G	L
016020	G-MAGIC	172	M10	60	75	90	19	35	17,5



## MATERIAL TECHNICAL DATA

### BRACKET

Carbon steel S235JR - EN10027

### COVER SHELL

White Nylon

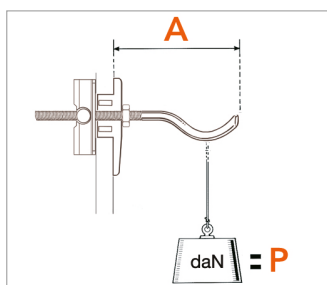
### TILTING COUNTER PLATE

Steel DX51 Z100 EN 10142 sendzimir galvanization

### BASE MATERIAL

Plasterboard

### RECOMMENDED LOADS



G-MAGIC	A	P
Single plate plasterboard 12,5 mm	97 127	18 12
Double plate plasterboard 25 mm	97 127	26 20

Recommended loads refer to the single bracket, also considering the base material. Load capacity is highly influenced by the plasterboard plate's density. 1daN=1kg

### INSTALLATION

Please check installation instructions included in the package.

### INSTALLATION TOOLS AND RECOMMENDATION

Please check installation instructions included in the package.

### PACKAGING

In blister pack

### RELATED ITEMS

> Plasterboard product range

### DATA 03-2020 REV. 00

The current technical data sheet substitutes and cancels the previous ones. Information correspond with our current knowledge of the product. It cannot lead us to any sort of responsibility or compensation.

Gia S.p.A. reserves the right of changing technical features and molds without notice.

Gia S.p.A. – Via Sac. A. Cremona, 12 – 28069 Trecate (NO) – [www.gia.it](http://www.gia.it)

T 01.03A.09A REV 0

