

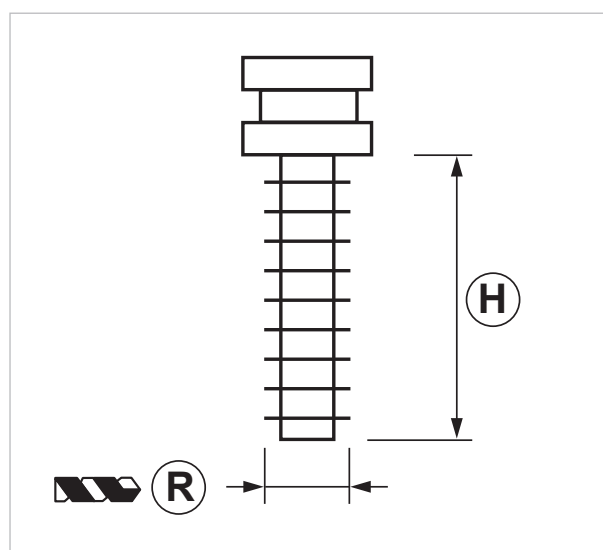
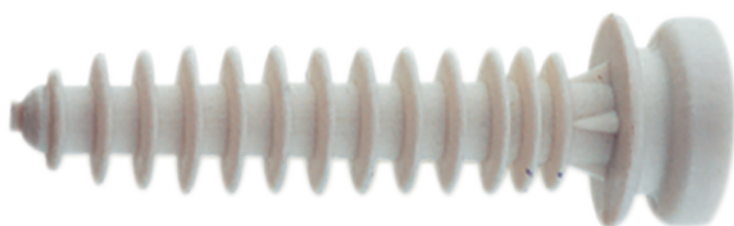
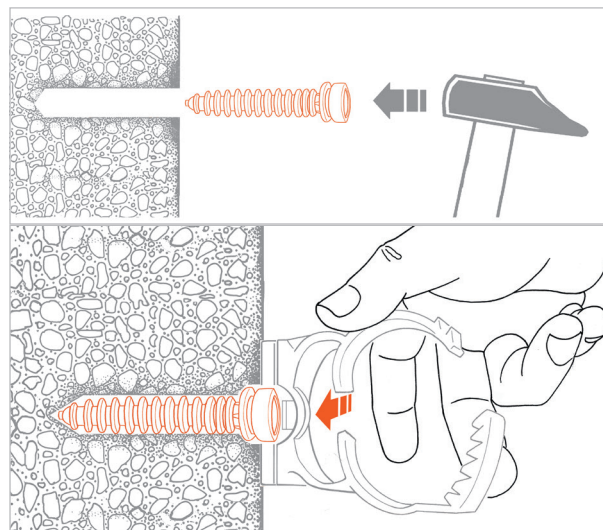
G-FAST G-CLIP Fast fixing plug

APPLICATION

Used to fasten G-Clip pipe clamps on masonry.

FEATURES AND BENEFITS

- > **Quick and easy installation:** the plug is to be inserted in the masonry with a hammer.
- > One simple move is required to set G-Clip pipe clamp properly.
- > Particularly suitable for solid brick walls, **it can be used for any kind of masonry as well.**



COD	TYPE	H	R
092095	G-FAST	30	6

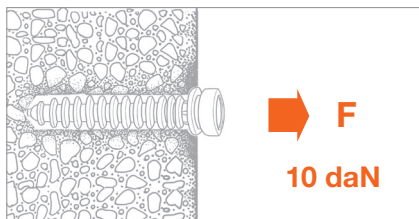
NYLON PIPE CLAMPS PIPE CLAMPS AND PIPE LINES FIXINGS

MATERIALS TECHNICAL DATA

PLUG

Polyamide PA6

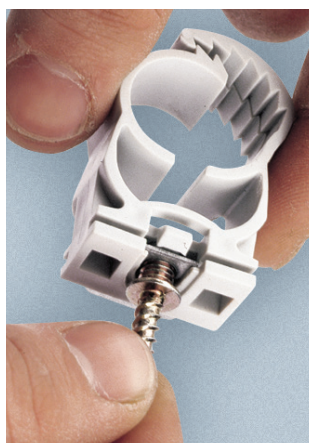
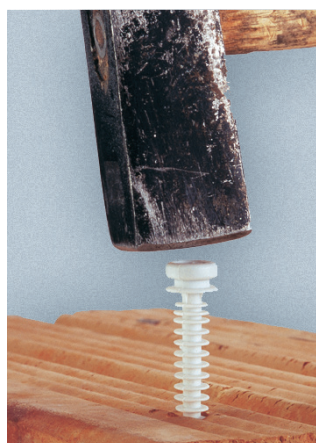
RECOMMENDED LOADS



TYPE	F
G-FAST	10

Recommended load is the average resistance load with a safety coefficient. Data are expressed in daN. 1daN=1kg.

INSTALLATION PROCESS



PACKAGING

In cardboard box

DATA 09-2022 REV. 01

The current technical data sheet substitutes and cancels the previous ones. The details provided fit our current knowledge of the product. It cannot lead us to any sort of responsibility or compensation.

Gia S.p.A. reserves the right of changing technical features and molds without notice.

This company is subject to "Ethica Global Investments S.p.A." management.

Gia S.p.A. – Via Sac. A. Cremona, 12 – 28069 Trecate (NO) – www.gia.it