

FLIP R

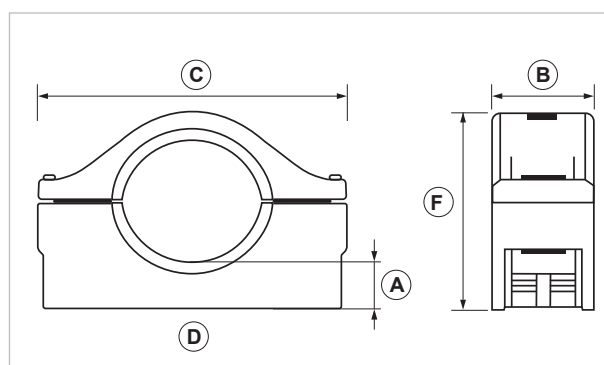
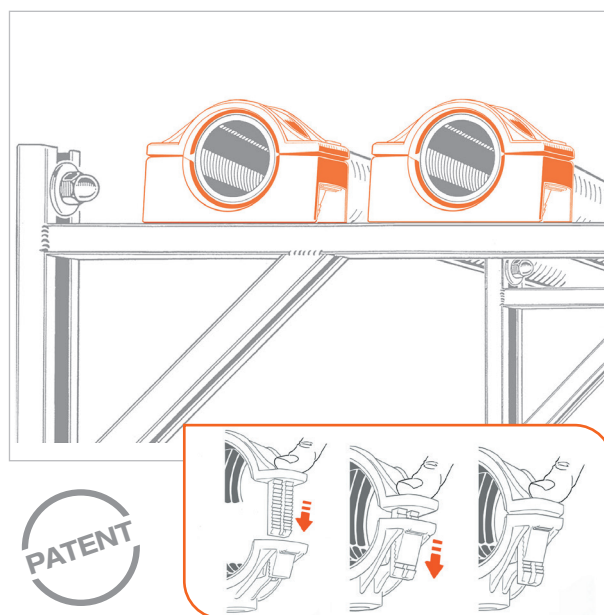
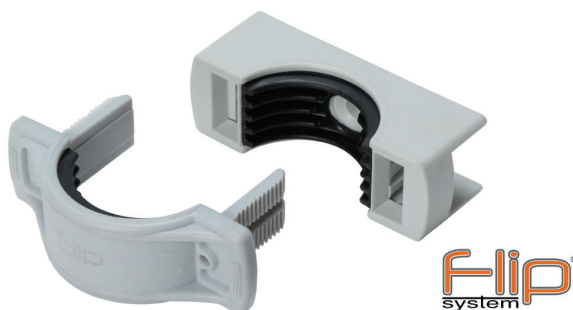
Fast locking flat pipe clamp

APPLICATION

Pipe lines fastening for water and sanitary systems, drainpipes, and electric canalization, both indoor and outdoor. It is particularly suitable to be fixed on masonry.

FEATURES AND BENEFITS

- > It can be closed with the **simple fingers pressure**. No tools are required.
- > The **PA 6.6 material** makes it particularly **long-lasting and resistant** to atmospheric agents, UV rays and corrosion.
- > It is recommended **for every kind of pipe lines**.
- > The locking system is adjustable in order to allow the creation of both **fixed and sliding points on the same pipe clamp**.
- > Its **bi-material technology**, provided with the EPDM internal sheath, ensures **excellent sound-proof performances**.
- > **The flat base** reduces the amount of space occupied on the pipe's surface and **increases the fixing's stability**.
- > Available in 3 different colors - **grey, yellow and brown** - to guarantee the best looking result in every kind of application.



COD	TYPE	For pipes Ø mm	Color	A	B	C	D	F
180405	FLIP R 3/8"	14-18	Grey	13	20	53	max. screw 6	32
180410	FLIP R 1/2"	20-24	Grey	13	25	65	max. screw 6	37
180415	FLIP R 3/4"	25-30	Grey	10	25	70	max. screw 6	38
180420	FLIP R 1"	32-36	Grey	11	25	78	max. screw 6	49
180425	FLIP R 1 1/4"	38-44	Grey	12	27,5	86	max. screw 6	55
180430	FLIP R 1 1/2"	44-50	Grey	12	27,5	92	max. screw 6	61
180435	FLIP R 2"	56-63	Grey	12	28	105	max. screw 6	73
180440	FLIP R 2 1/2"	74-80	Grey	13	30	126	max. screw 6	94
180445	FLIP R 3"	84-90	Grey	13	30	137	max. screw 6	104

FLIP® SYSTEM

PIPE CLAMPS AND PIPE LINES FIXINGS

YELLOW

Used to fasten **gas** pipe lines.



BROWN

Used to fasten **copper** pipe lines.



COD	TYPE	For pipes Ø mm	Color	A	B	C	D	F
180505	FLIP RG 3/8"	14-18	Yellow	13	20	53	max. screw 6	32
180510	FLIP RG 1/2"	20-24	Yellow	13	25	65	max. screw 6	37
180515	FLIP RG 3/4"	25-30	Yellow	10	25	70	max. screw 6	38
180520	FLIP RG 1"	32-36	Yellow	11	25	78	max. screw 6	49
180525	FLIP RG 1 1/4"	38-44	Yellow	12	27,5	86	max. screw 6	55
180530	FLIP RG 1 1/2"	44-50	Yellow	12	27,5	92	max. screw 6	61
180535	FLIP RG 2"	56-63	Yellow	12	28	105	max. screw 6	73
180605	FLIP RM 3/8"	14-18	Brown	13	20	53	max. screw 6	32
180610	FLIP RM 1/2"	20-24	Brown	13	25	65	max. screw 6	37
180615	FLIP RM 3/4"	25-30	Brown	10	25	70	max. screw 6	38
180620	FLIP RM 1"	32-36	Brown	11	25	78	max. screw 6	49
180625	FLIP RM 1 1/4"	38-44	Brown	12	27,5	86	max. screw 6	55
180630	FLIP RM 1 1/2"	44-50	Brown	12	27,5	92	max. screw 6	61
180635	FLIP RM 2"	56-63	Brown	12	28	105	max. screw 6	73
180640	FLIP RM 2 1/2"	74-80	Brown	13	30	126	max. screw 6	94

MATERIAL TECHNICAL DATA

MATERIAL

Polyamide PA 6.6 stabilized against UV rays

AVAILABLE COLORS

Grey RAL 7035 | Yellow RAL 1003 | Brown RAL 8014

VIBRATION-PROOF RUBBER

Vibration-proof sheath with black EPDM thermoplastic elastomer

HARDNESS

60 Shore A

INSERT

Brass CW614N - EN 12164

PLUG (when provided)

Polyamide 6

SCREW

6x70 countersunk screw - steel 4.8 EN ISO 898.1 with electro zinc plating 7-8 µm

TEMPERATURE

-20°C | +100°C

PERFORMANCE UNDER FIRE SITUATIONS - Body and seal

Self-extinguishment according to UL94 regulation: "V2" class | "HB" class

DIMENSIONS

Type	Flip-R 3/8"	Flip-R 1/2"	Flip-R 3/4"	Flip-R 1"	Flip-R 1 1/4"	Flip-R 1 1/2"	Flip-R 2"	Flip-R 2 1/2"	Flip-R 3"	Tol.
Diameter	14-18	20-24	25-30	32-36	38-44	44-50	56-63	74-80	84-90	-
H	32	37	38	49	55	61	73	94	104	± 1
L	53	65	70	78	86	92	105	126	137	± 1
S	20	25	25	25	27,5	27,5	28	30	30	± 0.5
A	13	13	10	11	12	12	12	13	13	± 1
Ø hole per screw	6	6	6	6	6	6	6	6	6	± 0.8
Weight (g)	18	31	31	40	52	62	74	107	123	± 1

Values are expressed in mm if not differently specified.

RESISTANCE

Recommended loads ¹										
Type	Flip-R 3/8"	Flip-R 1/2"	Flip-R 3/4"	Flip-R 1"	Flip-R 1 1/4"	Flip-R 1 1/2"	Flip-R 2"	Flip-R 2 1/2"	Flip-R 3"	Unit of measurement
No influences										
Traction	0,65	0,90	1,00	1,00	1,00	1,00	1,00	1,70	1,70	kN
Shear	0,65	0,85	0,85	0,85	0,85	0,90	0,90	1,20	1,20	kN

All tests were carried out at the EQI-European Quality Institute Srl certified laboratory.

All values are expressed in mm if not differently specified.

All levels of tensile strength and shear resistance are average values and they are related to the break of the testing item. Data provided in daN. 1daN=1 kg.

A safety coefficient of 3 has been used. 1 kN=100 kg

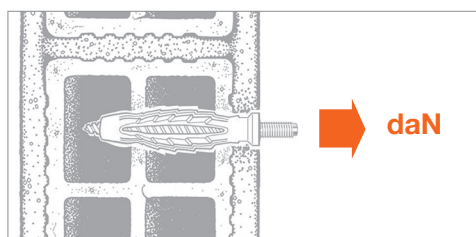
Chemical resistance to reagents

Reagent	Notes about reagents	Temperature (°C)	Time (days)	PDL RATING ⁴	Notes about resistance
Oil		23		8	Very good resistance
Motor oil		81	3	6	
	5W30	23	60	9	
Mineral oil		23		8	Resistant
		93	1	1	
Ethylene glycol		23	56	6	Little changes in properties
		23	7	6	
Petrol	Gas oil	23		8	Very good resistance
	Lead-free petrol	23	21	9	
Gasolio		22	30	9	
	Diesel oil	23		8	Resistant

This evaluation has been developed by PDL and it has a maximum value of 10 and a minimum value of 1.

Bibliography: CHEMICAL RESISTANCE, vol. I - Thermoplastics, Second Edition, PDL Handbook Series, Plastic Design Library, 13 Eaton avenue Norwich, NY.

ANCHORING SYSTEM'S RECOMMENDED LOADS



Recommended load is the average resistance loads with a safety coefficient.

Data expressed in daN. 1daN = 1 kg.

*C20/25 = 250 kg/cm²

**The difference between existing bricks may provide different values as compared to those inserted in the chart.

TYPE	Concrete C20/C25*	Solid bricks**	Double UNI hollow bricks**	Hollow bricks**	Concrete hollow bricks
TNY 10 with 6x70 screw	68	60	46	23	52

INSTALLATION

FLIP-R fast locking pipe clamp can be easily and rapidly installed by using a TNY10 plug and a 6x70 countersunk head screw. Fix the flat part directly on the wall with the countersunk head screw, screwing it in the plug that has been inserted in the wall.

You can quickly fasten the pipe line just by pressing the moving part on the fixed one until the pipe line is locked. The rubber warps making the pipe clamp better adhere to the pipe line. It is possible to create either fixed or sliding points on the installation by keeping the pipe clamp more or less locked on the pipe line.

Thanks to the so called Apriflip tool - made up of two Philips screwdrivers, with 3mm diameter - it is very easy to open the pipe clamp.

You just have to completely insert the Apriflip's pivots into the specific hole of the clamp and pull out: doing so the moving part gets free and the pipe line can be removed.

INSTALLATION TOOLS AND RECOMMENDATION

At low temperatures the pipe clamp loses the flexibility that is needed during installation, and its resistance to crash decreases (low temperatures help to guarantee a good endurance of the clamp once it has been installed). Avoid hitting the moving part of the pipe clamp with a hammer to close it because it might damage the serrated splines.

While using the clamp, the highest temperature affordable is 100°C. While screwing the item to the wall, don't use tools to force pipe clamp's tightening to the fixing kit (plug/ threaded rod / double thread screw).

Don't keep the splines out of shape for long in order not to compromise their functionality.

The flexibility of the material allows you to close the pipe clamp in the first place, and to open it again later on. If the splines have been deformed due to a wrong use of the item, make them rest (do not assemble them together) until they recover their original shape.

PACKAGING

In bag

STORAGE

It is recommended to storage the item at a temperature higher than 10°C: at low temperatures the pipe clamp tends to lose the flexibility needed during installation.

RELATED ITEMS

> FLIP System

DATA 09-2022 REV. 01

The current technical data sheet substitutes and cancels the previous ones. The details provided fit our current knowledge of the product. It cannot lead us to any sort of responsibility or compensation.

Gia S.p.A. reserves the right of changing technical features and molds without notice.

This company is subject to "Ethica Global Investments S.p.A." management.

Gia S.p.A. – Via Sac. A. Cremona, 12 – 28069 Trecate (NO) – www.gia.it