

### DRP

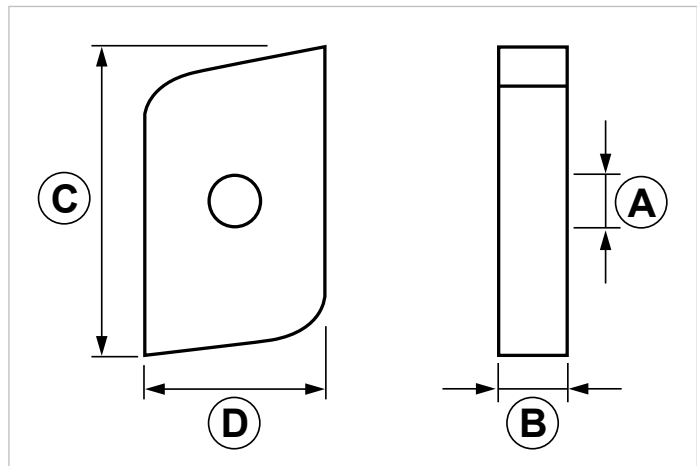
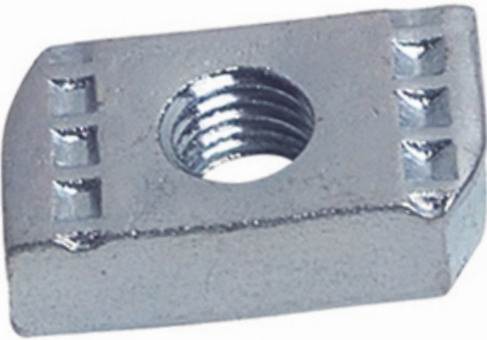
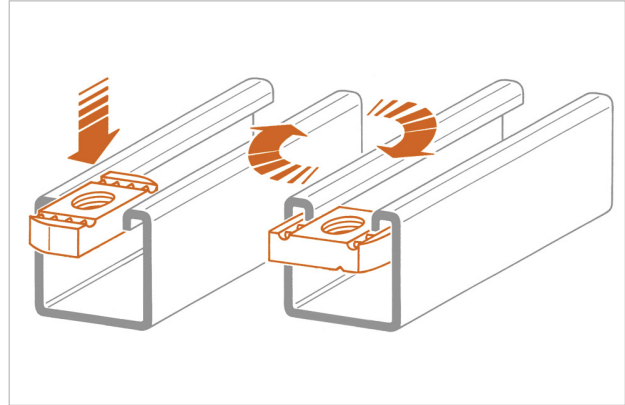
#### Square nut for heavy duty strut channels

#### APPLICATION

Used for connections on PF3 and PF4 strut channels.

#### FEATURES AND BENEFITS

- > It can be inserted **anywhere on the strut channel** with a simple 90° rotation.



COD	TYPE	A	B	C	D
162060	DRP 06	M6	6	36	20
162120	DRP 08	M8	6	36	20
162220	DRP 10	M10	7,5	36	20
162320	DRP 12	M12	10	36	20

# INDUSTRIAL FIXING SYSTEMS

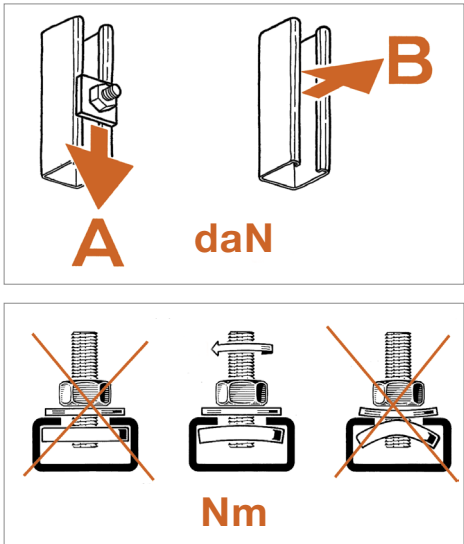
## CONNECTION PARTS

### MATERIALS TECHNICAL DATA

#### SQUARE NUT

Steel DD11 EN 10111 with electro zinc plating 7-8 µm

### RECOMMENDED LOADS



Recommended load is the average resistance loads with a safety coefficient. 1 daN=1 kg.

**A - B** = Recommended loads    **Nm** = Tightening torque

PF3 - PF4			
TYPE	A	B	Nm
DRP 06	55	240	10
DRP 08	70	240	25
DRP 10	70	330	25
DRP 12	180	330	40

### PACKAGING

In polyethylene bags or cardboard boxes

### RELATED ITEMS

- > PF3 and PF4 strut channels
- > Threaded rods
- > Pipe clamps

### DATE 06-2023 REV. 00

The current technical data sheet substitutes and cancels the previous ones. The details provided fit our current knowledge of the product. It cannot lead us to any sort of responsibility or compensation.

Gia S.p.A. reserves the right of changing technical features and molds without notice.

This company is subject to "Ethica Global Investments S.p.A." management.

Gia S.p.A. – Via Sac. A. Cremona, 12 – 28069 Trecate (NO) – [www.gia.it](http://www.gia.it)